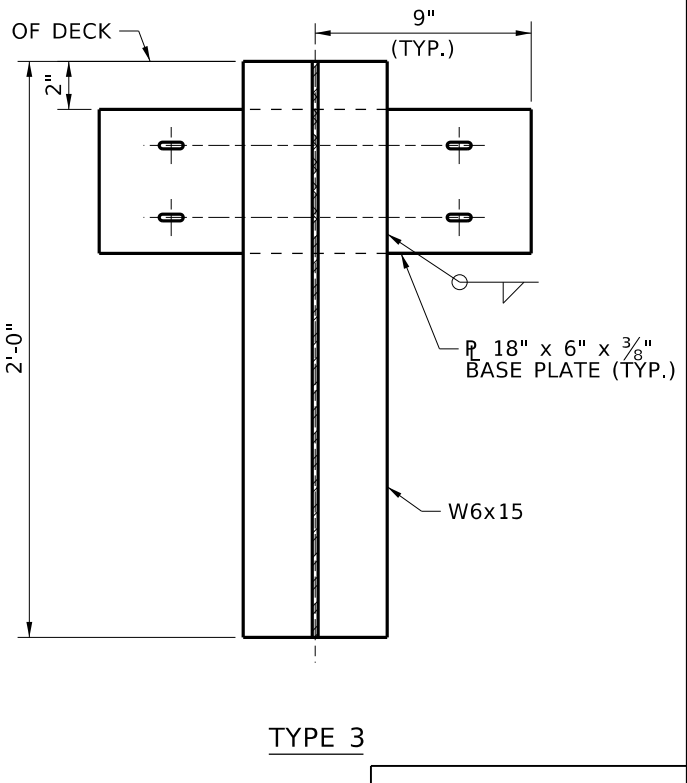
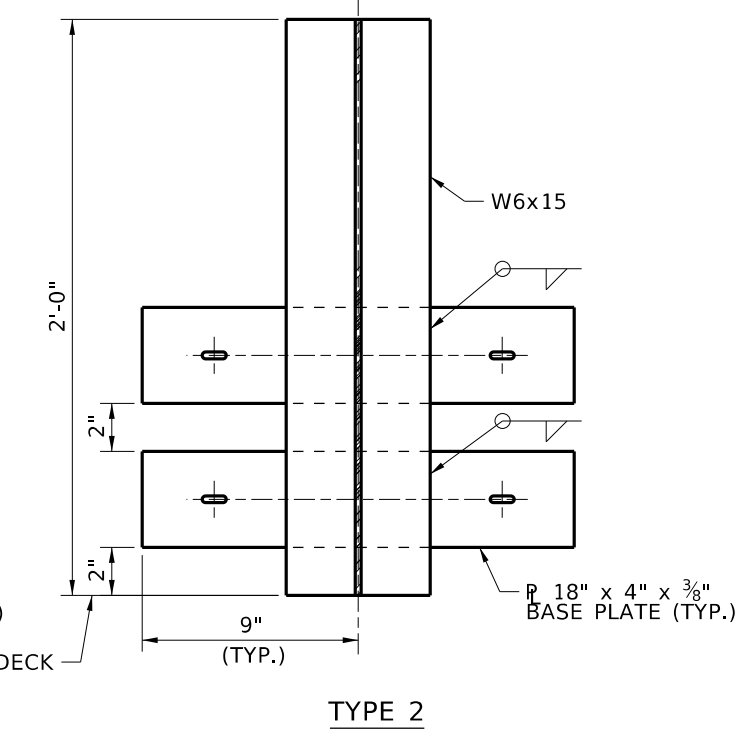
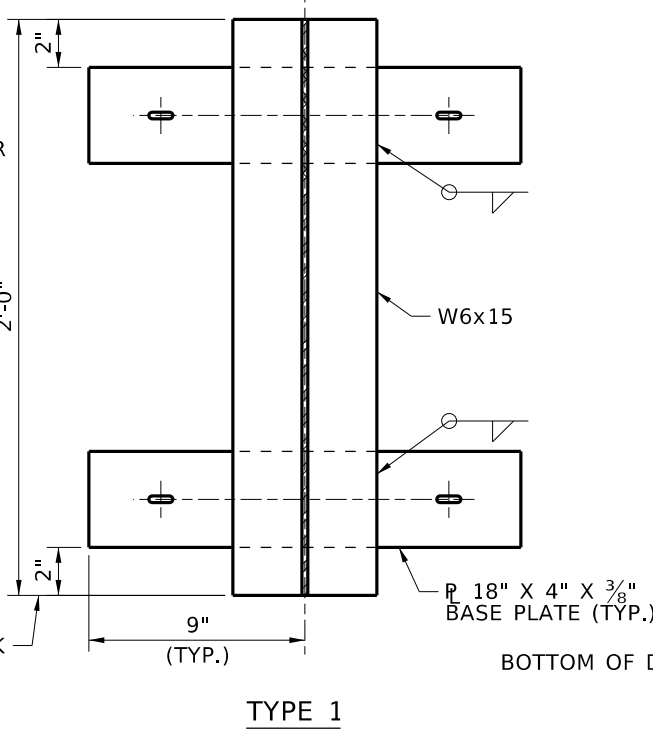
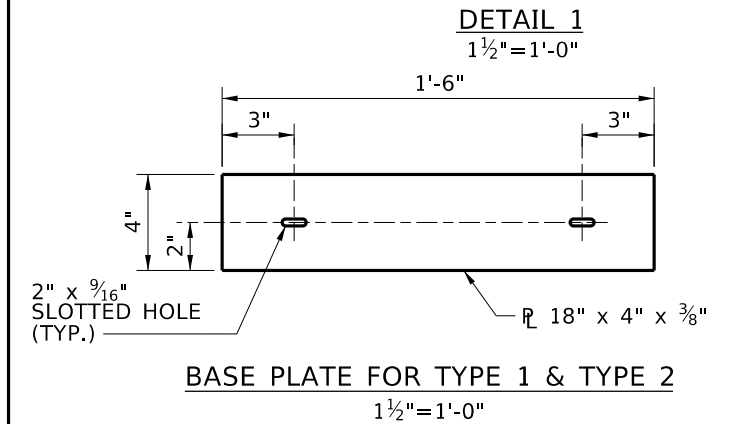
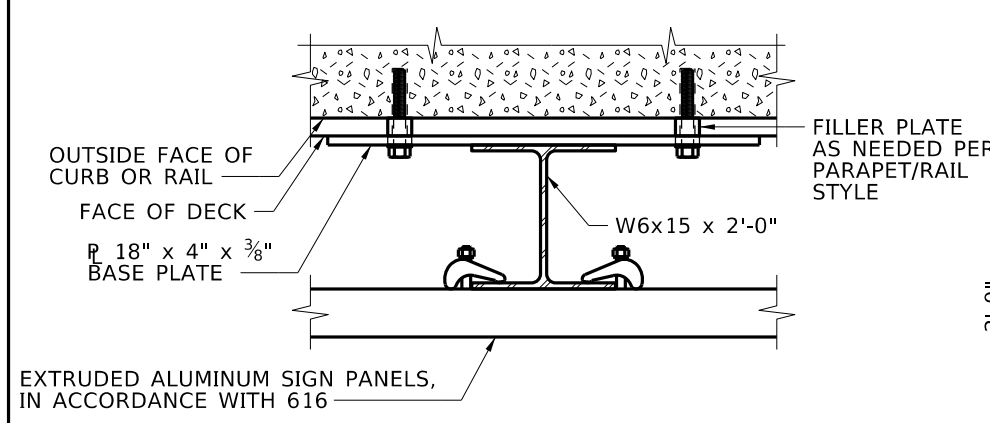
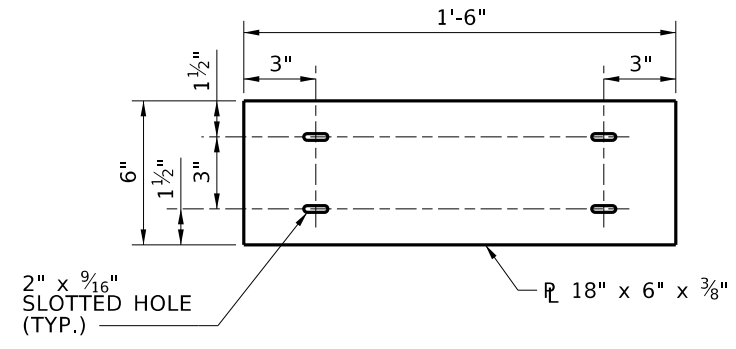
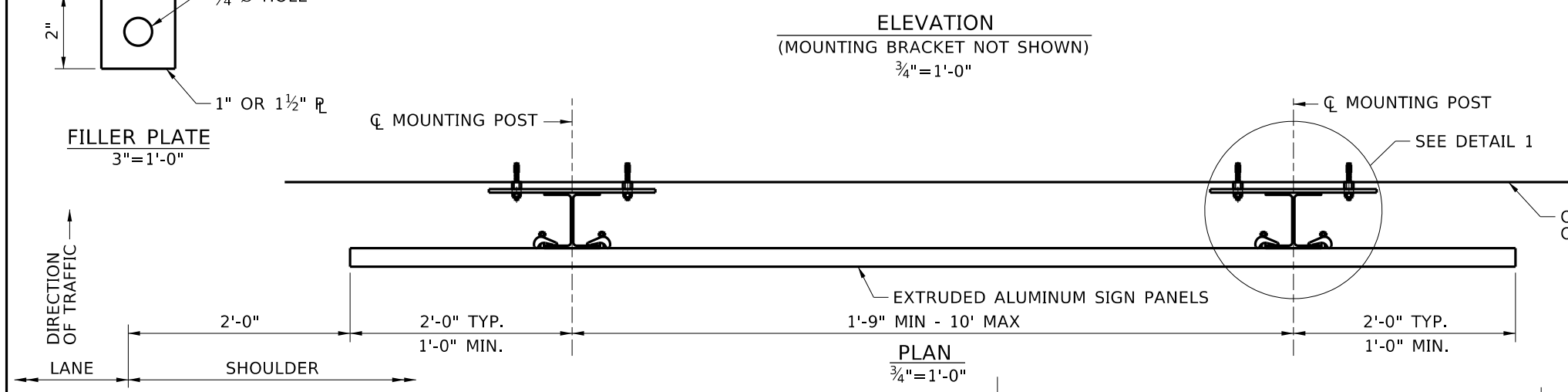


**NOTES**

1. MOUNT BOTTOM OF SIGN FLUSH WITH THE BOTTOM EDGE OF THE DECK FACING TRAFFIC.
2. ALIGN THE LEFT EDGE OF THE SIGN 2'-0" TO THE RIGHT OF THE LANE/SHOULDER STRIPE.
3. THIS DRAWING WILL BE ACCOMPANIED BY STANDARD DRAWING 616.2, EXTRUDED ALUMINUM SIGNS.
4. PROVIDE STRUCTURAL STEEL PLATES AND SHAPES IN ACCORDANCE WITH ASTM A36 AND GALVANIZE IN ACCORDANCE WITH ASTM A123.
5. SEE ROADWAY PLANS FOR SIGN DETAILS.
6. PROVIDE SIGN IN ACCORDANCE WITH "STANDARD HIGHWAY SIGNS" MANUAL FOR GUIDE SIGN DESIGNATION D3-1 FOR WHITE ON GREEN BACKGROUND.
7. PROVIDE 1/2" DIA. STAINLESS STEEL SCREW ANCHORS IN ACCORDANCE WITH ACI 318-19, CHAPTER 17 THAT MEET ASSESSMENT CRITERIA OF ACI 355.2. SUBMIT ICC-ES REPORT.
8. PAY FOR EXTRUDED ALUMINUM SIGN PANELS UNDER THE PAY ITEM 616-015A. MOUNTING BRACKET COST INCIDENTAL TO PAY ITEM 616-015A.



**MOUNTING BRACKET DETAIL**  
1 1/2"=1'-0"

| REVISIONS |      |    |             |
|-----------|------|----|-------------|
| NO.       | DATE | BY | DESCRIPTION |
|           |      |    |             |
|           |      |    |             |
|           |      |    |             |
|           |      |    |             |

|                |
|----------------|
| DESIGNED       |
| DESIGN CHECKED |
| DETAILED       |
| DWG. CHECKED   |
| CORRECTIONS    |

SCALES SHOWN ARE FOR 11" X 17" PRINTS ONLY  
CADD FILE NAME: Standards/Bridge Standard Drawings/B13\_8.DGN  
DRAWING DATE: DEC 2024

**IDAHO TRANSPORTATION DEPARTMENT**  
YOUR Safety→YOUR Mobility→YOUR Economic Opportunity  
APPROVED BY: BRIDGE ENGINEER **MICHAEL T. JOHNSON** DATE: \_\_\_\_\_

**ENGLISH**  
PROJECT NO.

**BRIDGE NAME SIGNAGE**  
  
BRIDGE LRFD DESIGN MANUAL, B13.8

| BRIDGE PLANS    |          |
|-----------------|----------|
| BRIDGE KEY NO.  |          |
| COUNTY          | KEY NO.  |
| BRIDGE DWG. NO. | SHEET OF |