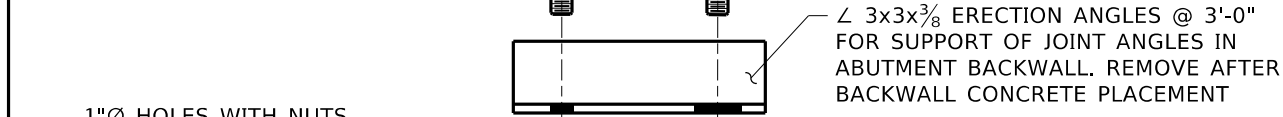


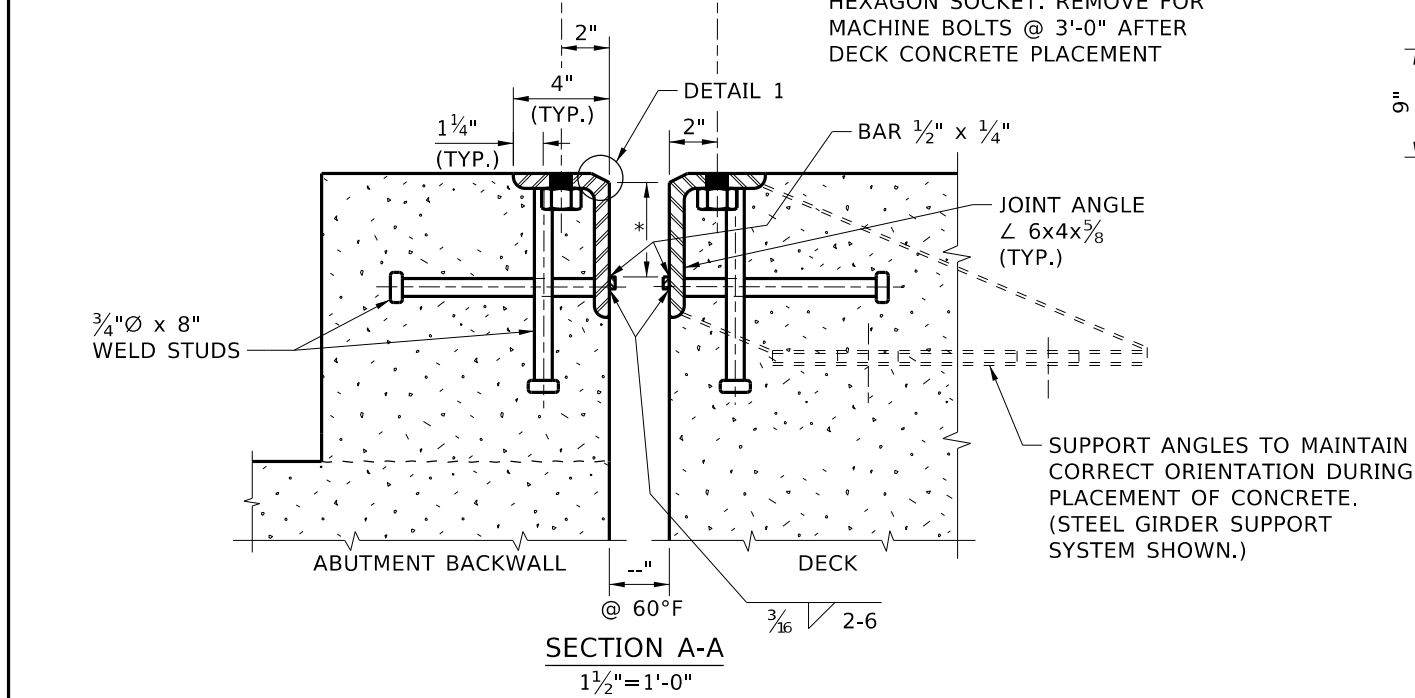
7/8"Ø x 1 3/4" MACHINE BOLTS, FOR SUPPORT OF ERECTION ANGLES @ 3'-0". BOLTS AND ANGLES TO BE PLACED AFTER DECK CONCRETE PLACEMENT. REMOVE IMMEDIATELY AFTER BACKWALL CONCRETE PLACEMENT

PLAN
1/2" = 1'-0"



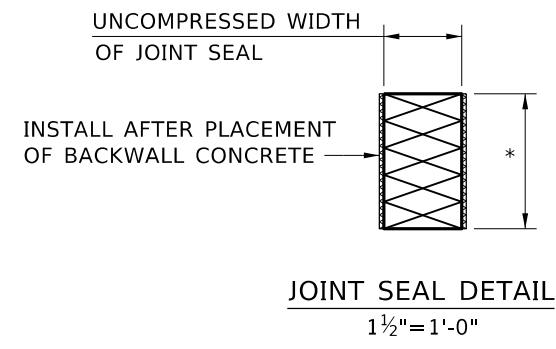
1"Ø HOLES WITH NUTS TACK WELDED TO UNDERSIDE OF JOINT ANGLES @ 3'-0" AND 1" BLEED HOLES @ 1'-0"

7/8"Ø x 1 1/2" SET SCREWS, HEXAGON SOCKET. REMOVE FOR MACHINE BOLTS @ 3'-0" AFTER DECK CONCRETE PLACEMENT

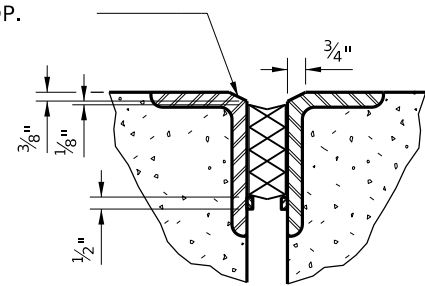


SECTION A-A
1 1/2" = 1'-0"

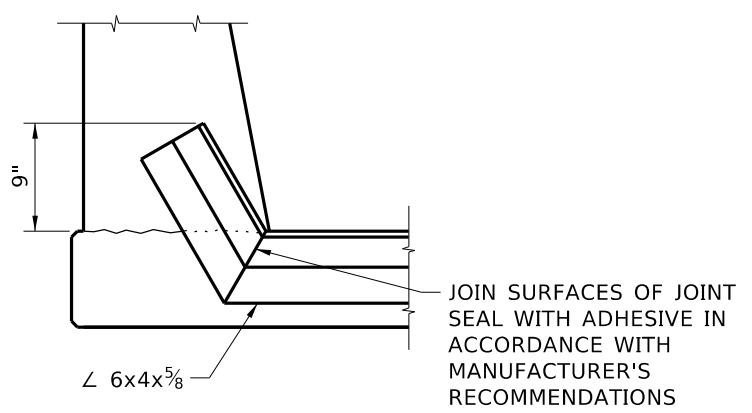
BEVEL MAY BE FLAME CUT PROVIDED THE BURRS, SPATTERS, AND PROJECTIONS ARE GROUND OFF. DO WORK IN THE SHOP.



JOINT SEAL DETAIL
1 1/2" = 1'-0"

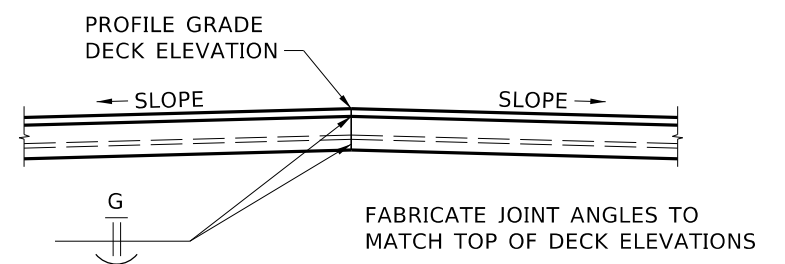


DETAIL 1
1 1/2" = 1'-0"



TYPICAL CURB SEAL DETAIL
NTS

- NOTES**
1. PROVIDE STRUCTURAL STEEL IN ACCORDANCE WITH ASTM A709 GRADE 36, AND GALVANIZE IN ACCORDANCE WITH ASTM A123.
 2. INSTALL THE TOP OF THE JOINT ANGLE PARALLEL TO THE PROFILE GRADE.
 3. PROVIDE JOINT ANGLES WITH A MINIMUM THICKNESS OF 5/8".
 4. PROVIDE SUITABLE SUPPORT DURING DECK POUR AND INCLUDE SUPPORT SYSTEM DETAILS ON SHOP PLANS.
 5. DIMENSIONS MARKED * ARE IN ACCORDANCE WITH MANUFACTURER'S RECOMMENDATIONS.
 6. ADJUST THE EXPANSION JOINT X" FOR EVERY 10°F CHANGE IN TEMPERATURE FROM THE MEDIAN TEMPERATURE OF 60°F AT THE TIME OF INSTALLATION OF THE JOINT.
 7. PROVIDE CONTINUOUS JOINT SEAL.
 8. WHEN THE JOINT ANGLES EXCEED 60' IN LENGTH, A MAXIMUM OF TWO FIELD SPLICES WILL BE PERMITTED. DO NOT LOCATE THE FIELD SPLICE IN THE WHEEL PATH, AND SHOW THE LOCATION ON THE SHOP DRAWINGS.
 9. INSTALL THE SEAL AS IN ACCORDANCE WITH THE MANUFACTURER'S RECOMMENDATIONS USING AN ADHESIVE LUBRICANT. PROVIDE ADHESIVE LUBRICANT IN ACCORDANCE WITH ASTM D4070.
 10. PROVIDE PREFORMED EXPANSION JOINT SEAL IN ACCORDANCE WITH AASHTO M297.
 11. SUBMIT SHOP DRAWINGS IN ACCORDANCE WITH 105.02.
 12. FABRICATE THE COMPLETED JOINT ASSEMBLY, INCLUDING COMPONENTS AND SUBASSEMBLIES, BY ONE MANUFACTURER.



CROWN DETAIL
1 1/2" = 1'-0"

APPROXIMATE STEEL WEIGHT 48 LB/FT.

RECOMMENDED MANUFACTURERS OF THE SHOWN JOINT ASSEMBLY **

LOCATION	MANUFACTURER	STYLE	NOMINAL SEAL SIZE INCHES	
			WIDTH	HEIGHT
	WATSON BOWMAN ACME			
	D.S. BROWN			
	LYMTAL INTERNATIONAL			

** OR APPROVED EQUAL

REVISIONS			
NO.	DATE	BY	DESCRIPTION

DESIGNED	SCALES SHOWN ARE FOR 11" X 17" PRINTS ONLY
DESIGN CHECKED	CADD FILE NAME
DETAILED	Standards/Bridge Standard Drawings
DWG. CHECKED	B14_1A.DGN
CORRECTIONS	DRAWING DATE: DEC 2024

IDAHO TRANSPORTATION DEPARTMENT

YOUR Safety → YOUR Mobility → YOUR Economic Opportunity

APPROVED BY: BRIDGE ENGINEER **MICHAEL T. JOHNSON** DATE: _____

ENGLISH
PROJECT NO.

COMPRESSION SEAL EXPANSION JOINT
SKIEW <= 10^
BRIDGE LRFD DESIGN MANUAL, B14.1A

BRIDGE PLANS	
BRIDGE KEY NO.	
COUNTY	KEY NO.
BRIDGE DWG. NO.	SHEET OF