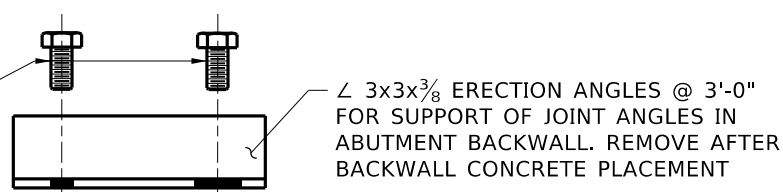
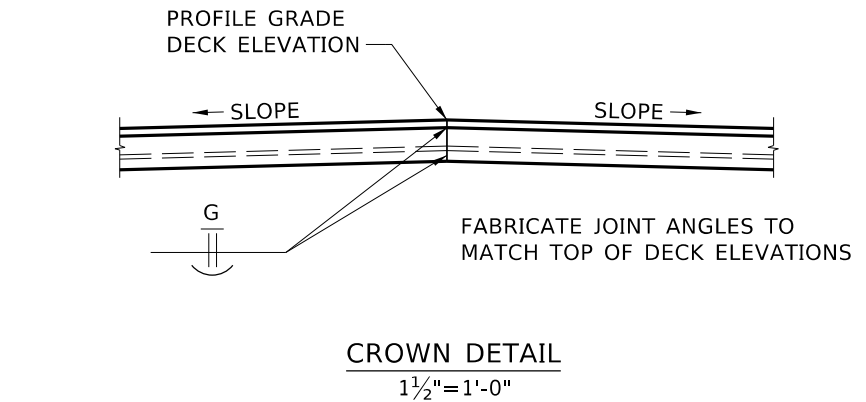
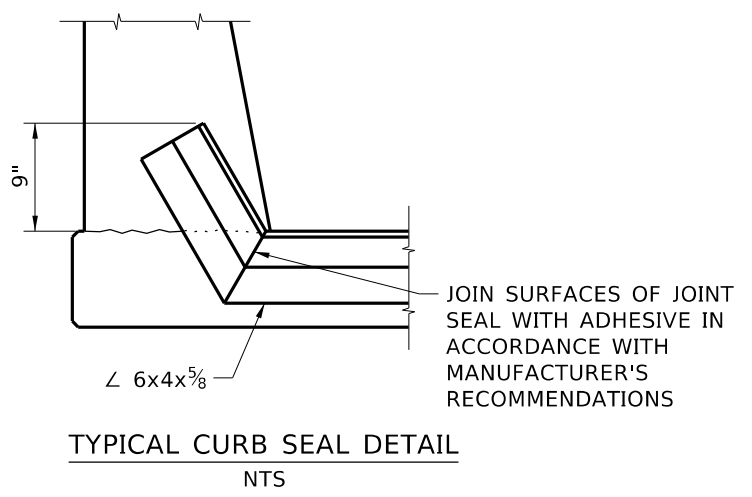
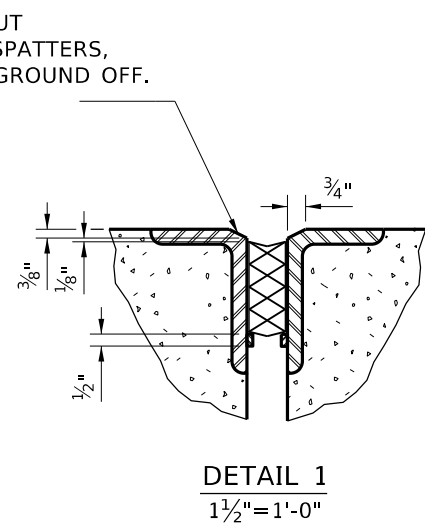
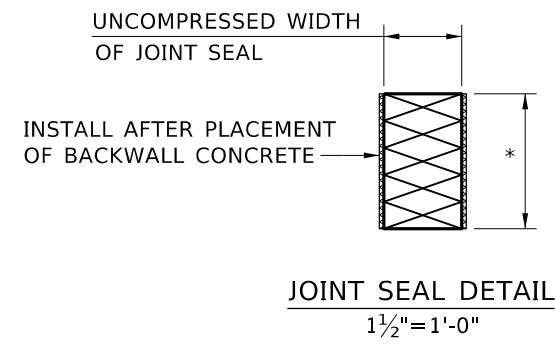
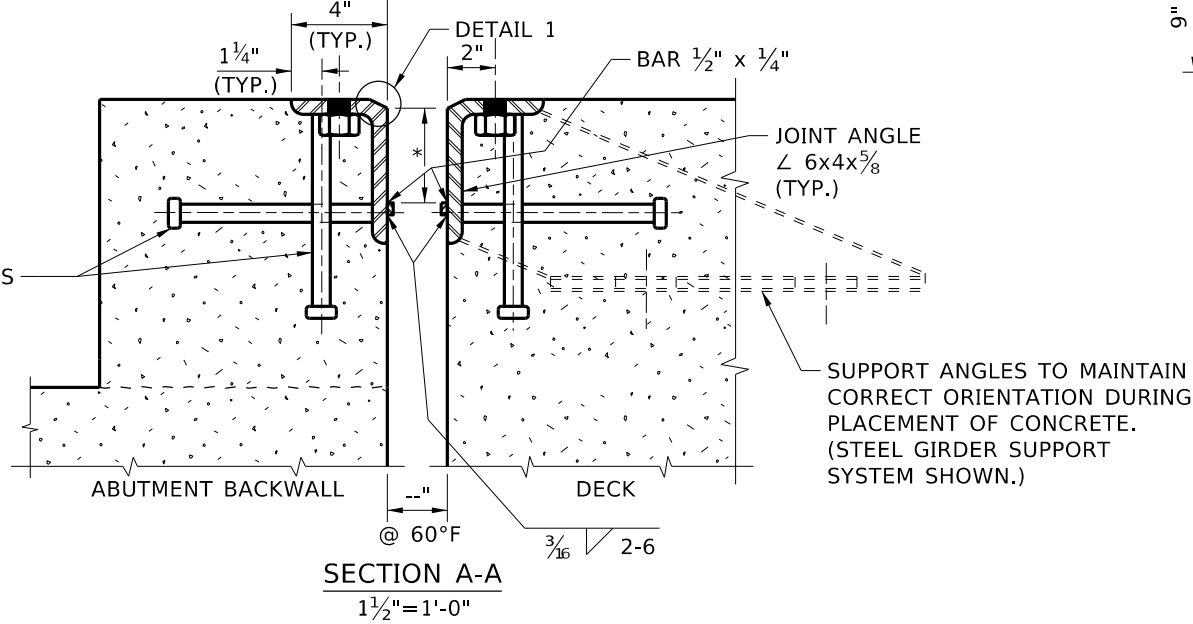


PLAN
1 1/2" = 1'-0"

7/8"Ø x 1 3/4" MACHINE BOLTS, FOR SUPPORT OF ERECTION ANGLES @ 3'-0". BOLTS AND ANGLES TO BE PLACED AFTER DECK CONCRETE PLACEMENT. REMOVE IMMEDIATELY AFTER BACKWALL CONCRETE PLACEMENT



1"Ø HOLES WITH NUTS TACK WELDED TO UNDERSIDE OF JOINT ANGLES @ 3'-0" AND 1" BLEED HOLES @ 1'-0"



APPROXIMATE STEEL WEIGHT 48 LB/FT.

RECOMMENDED MANUFACTURERS OF THE SHOWN JOINT ASSEMBLY **

LOCATION	MANUFACTURER	STYLE	NOMINAL SEAL SIZE INCHES	
			WIDTH	HEIGHT
	WATSON BOWMAN ACME			
	D.S. BROWN			
	LYMTAL INTERNATIONAL			

** OR APPROVED EQUAL

- NOTES**
1. PROVIDE STRUCTURAL STEEL IN ACCORDANCE WITH ASTM A709 GRADE 36, AND GALVANIZE IN ACCORDANCE WITH ASTM A123.
 2. INSTALL THE TOP OF THE JOINT ANGLE PARALLEL TO THE PROFILE GRADE.
 3. PROVIDE JOINT ANGLES WITH A MINIMUM THICKNESS OF 5/8".
 4. PROVIDE SUITABLE SUPPORT DURING DECK POUR AND INCLUDE SUPPORT SYSTEM DETAILS ON SHOP PLANS.
 5. DIMENSIONS MARKED * ARE IN ACCORDANCE WITH MANUFACTURER'S RECOMMENDATIONS.
 6. ADJUST THE EXPANSION JOINT "X" FOR EVERY 10°F CHANGE IN TEMPERATURE FROM THE MEDIAN TEMPERATURE OF 60°F AT THE TIME OF INSTALLATION OF THE JOINT.
 7. PROVIDE CONTINUOUS JOINT SEAL.
 8. WHEN THE JOINT ANGLES EXCEED 60' IN LENGTH, A MAXIMUM OF TWO FIELD SPLICES WILL BE PERMITTED. DO NOT LOCATE THE FIELD SPLICE IN THE WHEEL PATH, AND SHOW THE LOCATION ON THE SHOP DRAWINGS.
 9. INSTALL THE SEAL AS IN ACCORDANCE WITH MANUFACTURER'S RECOMMENDATIONS USING AN ADHESIVE LUBRICANT. PROVIDE ADHESIVE LUBRICANT IN ACCORDANCE WITH ASTM D4070.
 10. PROVIDE PREFORMED EXPANSION JOINT SEAL IN ACCORDANCE WITH AASHTO M297.
 11. SUBMIT SHOP DRAWINGS IN ACCORDANCE WITH 105.02.
 12. FABRICATE THE COMPLETED JOINT ASSEMBLY, INCLUDING COMPONENTS AND SUBASSEMBLIES, BY ONE MANUFACTURER.

REVISIONS

NO.	DATE	BY	DESCRIPTION
▲			
▲			
▲			
▲			

DESIGNED

DESIGN CHECKED

DETAILED

DWG. CHECKED

CORRECTIONS

SCALES SHOWN ARE FOR 11" X 17" PRINTS ONLY

CADD FILE NAME: Standards/Bridge Standard Drawings/B14_1B.DGN

DRAWING DATE: DEC 2024

IDAHO TRANSPORTATION DEPARTMENT

YOUR Safety→YOUR Mobility→YOUR Economic Opportunity

APPROVED BY: BRIDGE ENGINEER MICHAEL T. JOHNSON DATE:

ENGLISH

PROJECT NO.

COMPRESSION SEAL EXPANSION JOINT

BRIDGE LRFD DESIGN MANUAL, B14.1B

BRIDGE PLANS

BRIDGE KEY NO.	
COUNTY	KEY NO.
BRIDGE DWG. NO.	SHEET OF