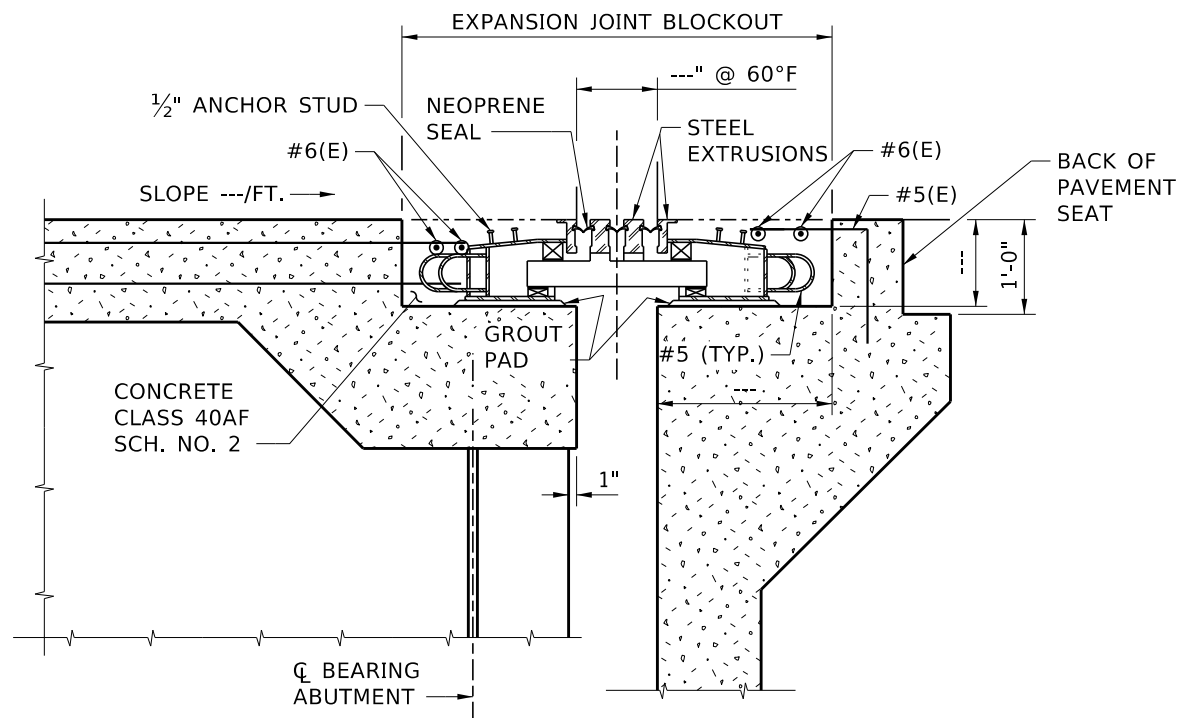
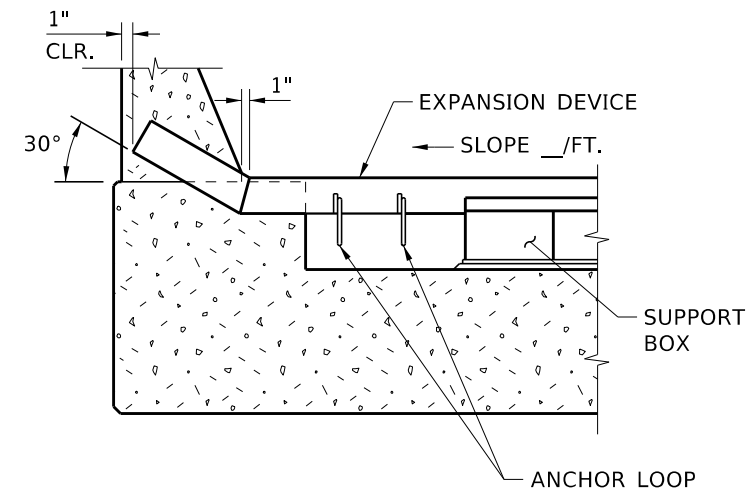


\* DIMENSION TO BE DETERMINED BY JOINT MANUFACTURER

PLAN  
1/4" = 1'-0"



SECTION A-A  
1/2" = 1'-0"



SECTION B-B  
1/2" = 1'-0"

**NOTES**

1. PROVIDE EXPANSION JOINT IN ACCORDANCE WITH THE REQUIREMENTS OF S501-30A, EXPANSION JOINT - MODULAR.
2. PROVIDE STEEL PLATES, BARS AND EXTRUSIONS IN ACCORDANCE WITH ASTM A709 GRADE 36 OR A588.
3. PROVIDE EXPANSION JOINTS OF THE FOLLOWING MODULAR TYPES:  
 WATSON BOWMAN & ACME      WABO - MAURER  
 D.S. BROWN                      BROWN / MAURER "D" SYSTEM  
 TECHSTAR                         MEJS (MUST MEET FATIGUE TEST REQUIREMENT TO BE APPROVED)
4. PROVIDE A MINIMUM TOTAL MOVEMENT PARALLEL TO THE CENTERLINE OF ROADWAY OF \_\_\_\_.
5. ADJUST THE EXPANSION JOINTS "X" FOR EVERY 10°F CHANGE IN TEMPERATURE FROM THE MEDIAN TEMPERATURE OF 60°F AT THE TIME OF INSTALLATION OF THE JOINT.
6. DO NOT INSTALL THE EXPANSION JOINT UNTIL THE ENTIRE SUPERSTRUCTURE, EXCEPT BARRIERS AND CONCRETE OVERLAY, IS COMPLETE.
7. PAINT EXPOSED METAL PARTS IN ACCORDANCE WITH 627 USING PAINT SYSTEM A, EXCEPT THE COLOR OF THE FINAL COAT WILL BE 26492 (GRAY), AMS-STD-595.
8. FOR BARRIER COVER PLATE DETAILS, SEE SHEET \_\_\_\_.
9. SUBMIT SHOP DRAWINGS IN ACCORDANCE WITH 105.02.
10. PLACE THE TWO SETS OF #6(E) BARS WITHIN EXPANSION JOINT RECESS AT EACH END OF SLAB DURING PLACEMENT OF EXPANSION JOINT CONCRETE.

REVISIONS			
NO.	DATE	BY	DESCRIPTION
▲			
▲			
▲			
▲			

DESIGNED
DESIGN CHECKED
DETAILED
DWG. CHECKED
CORRECTIONS

SCALES SHOWN ARE FOR 11" X 17" PRINTS ONLY
CADD FILE NAME
Standards/Bridge Standard Drawings B14_3.DGN
DRAWING DATE: OCT 2023

**IDAHO TRANSPORTATION DEPARTMENT**

YOUR Safety → YOUR Mobility → YOUR Economic Opportunity

APPROVED BY: BRIDGE ENGINEER **MICHAEL T. JOHNSON** DATE: \_\_\_\_\_

**ENGLISH**  
PROJECT NO. \_\_\_\_\_

**MODULAR EXPANSION JOINT**

BRIDGE LRFD DESIGN MANUAL, B14.3

BRIDGE PLANS	
BRIDGE KEY NO.	
COUNTY	KEY NO.
BRIDGE DWG. NO.	SHEET OF