

Bicycle Crash Summary



Summary

At the Idaho Transportation Department (ITD) our Strategic Plan is “Your Safety, Your Mobility, Your Economic Opportunity.” ITD is committed to providing the safest transportation system possible. Each year progress is made to eliminate death and serious injuries (SI) on Idaho’s highways. Traffic safety professionals have addressed behaviors, infrastructure improvements and enforcement countermeasures to reduce crashes. The goal, “Toward Zero Deaths,” is the foundation upon which we work.

All data and tables are 5 years of data, (2012-2016) except for the Fatalities and Serious Injuries graphs which are 10 years of data (2007-2016). The source of the crash information is the ITD statewide crash database which consists of crash reports completed by all law enforcement agencies in Idaho.

Special points of interest:

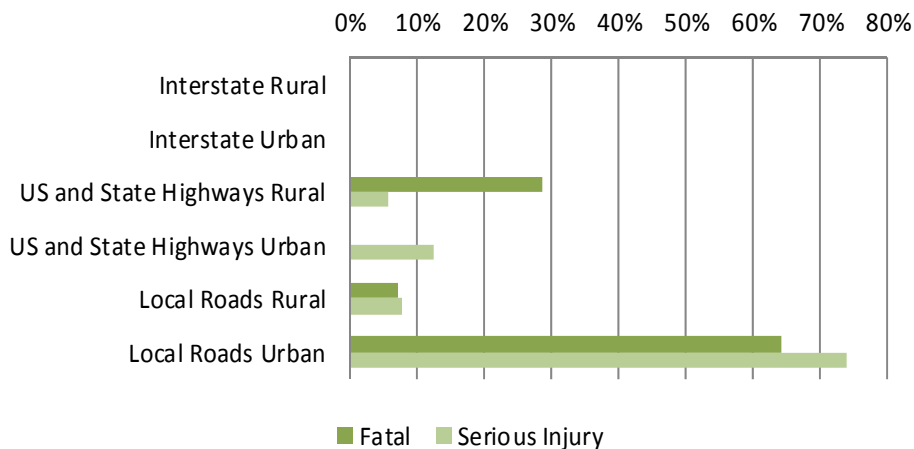
Fatalities and Serious Injuries (2012-2016)

- 1% of all fatal crashes
- 4% of all serious injury crashes
- 14 bicyclists killed
- 232 bicyclists seriously injured,
- Only 4 of 13 bicyclists (31%) killed were wearing a helmet
- Only 76 out of 230 bicyclists (33%) seriously injured were wearing a helmet
- 23% of bicyclists killed did not obey the stop sign or signal
- 22% of bicyclists killed or seriously injured failed to yield the right away
- 8% of bicyclists killed were impaired

Fatalities and Serious Injuries



Road Ownership and Types



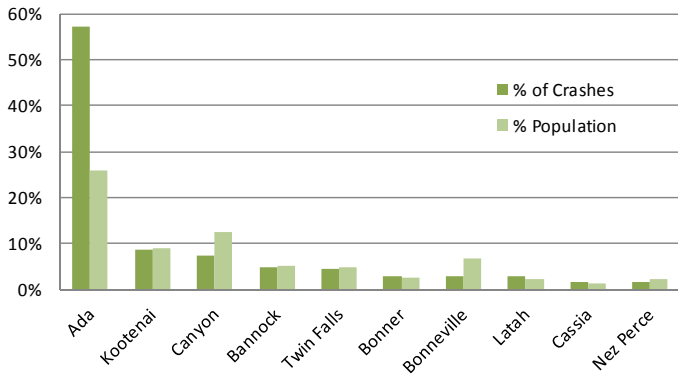
More Special points of interest:

Fatalities and Serious Injuries (2012-2016)

- 54% of bicycle fatal crashes happened in an intersection or were intersection related
- 46% of bicycle fatal crashes happened at a non junction
- 63% of bicycle serious injury crashes happened in an intersection or were intersection related
- 20% of bicycle serious injury crashes happened at a non junction
- 16% of bicycle serious injury crashes happened in a driveway, alley or parking lot or were driveway/alley/parking lot related

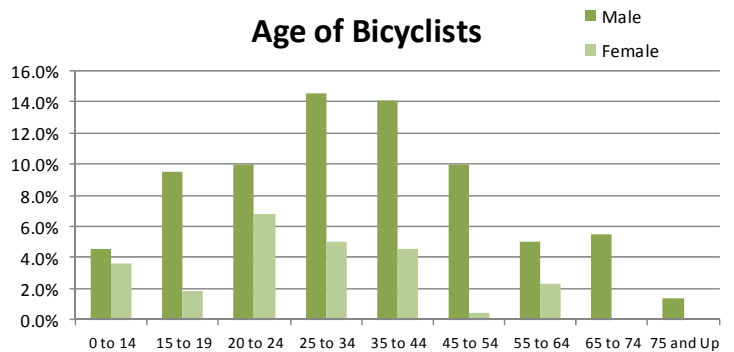
Bicycle Crash Summary

Top Ten Counties



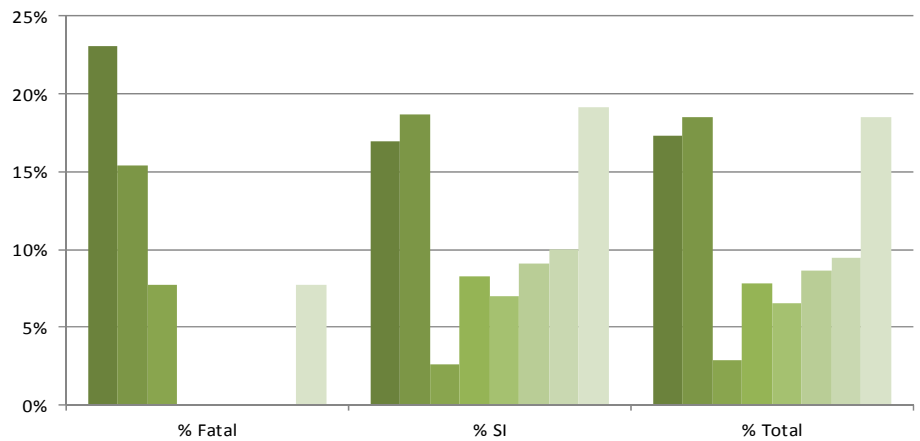
The graph shows the percent of crashes in the county compared to the percent of population in a county.

Age of Bicyclists



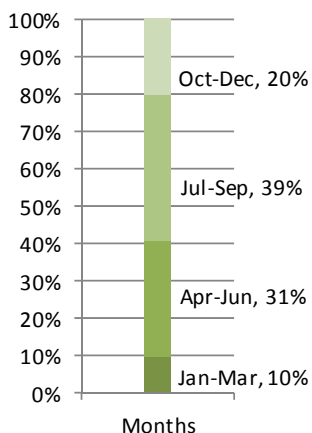
% of individuals by age category and gender killed or seriously injured in bicycle motor vehicle crashes.

This graph represents some of the actions of bicyclists in fatal and serious injury bicycle crashes. This is for the bicyclist, not the driver of the motor vehicle

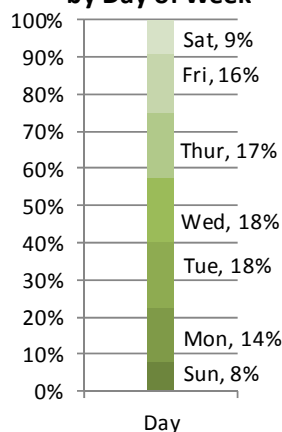


- Crossing at Intersection, Crosswalk
- Crossing at Intersection, NO Crosswalk
- Crossing at Mid-block, Crosswalk
- Crossing at Mid-block, NO Crosswalk
- Walk/Ride Facing Traffic NO Bike Lane
- Walk/Ride on Sidewalk
- Walk/Ride with Traffic IN Bike Lane
- Walk/Ride with Traffic NO Bike Lane

Fatal and SI Crashes by Month



Fatal and SI Crashes by Day of Week



Time of Day

