

2012-2016 Statewide Crash Summary



Summary

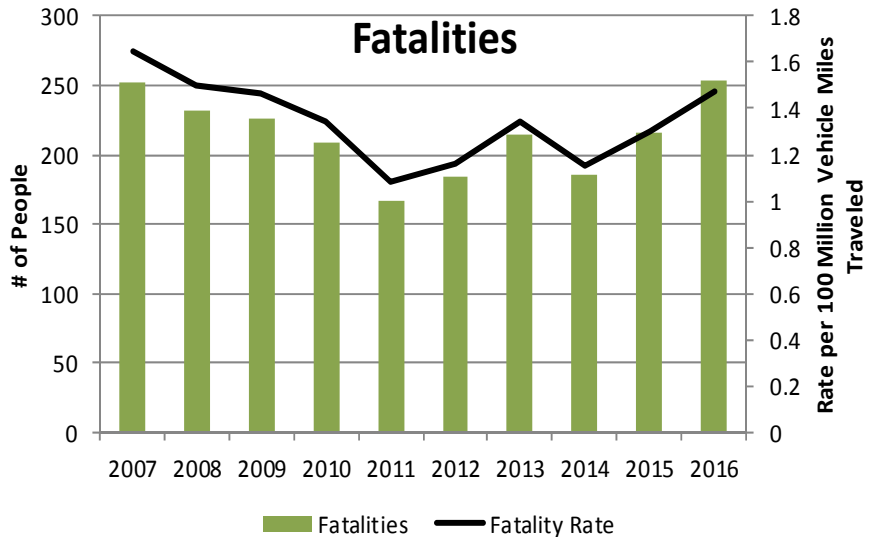
At the Idaho Transportation Department (ITD) our Strategic Plan is “Your Safety, Your Mobility, Your Economic Opportunity.” ITD is committed to providing the safest transportation system possible. Each year progress is made to eliminate death and serious injuries (SI) on Idaho’s highways. Traffic safety professionals have addressed behaviors, infrastructure improvements and enforcement countermeasures to reduce crashes. The goal, “Toward Zero Deaths”, is the foundation upon which we work.

All data and tables are 5 years of data, (2012-2016) except for the Fatalities and Serious Injuries graphs which are 10 years of data (2007-2016). The source of the crash information is the ITD statewide crash database which consists of crash reports completed by all law enforcement agencies in Idaho.

Special points of interest:

Fatalities (2012-2016)

- 974 Crashes
- 1053 People Killed
- 54% killed were unbelted (passenger vehicles only ages 7 and older)
- 78% crashes on rural roads
- 16% crashes on Interstates (rural and urban)
- 42% crashes US or State Highways (rural and urban)
- 41% crashes on Local Roads (rural and urban)



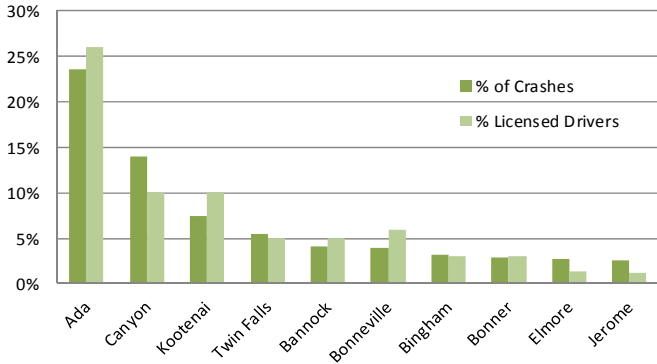
Special points of interest:

Serious Injuries (2012-2016)

- 5,224 Crashes
- 6,553 People Seriously Injured
- 26% seriously injured were unbelted (passenger vehicles only ages 7 and older)
- 48% crashes on rural roads
- 12% crashes on Interstates (rural and urban)
- 36% crashes on US or State Highways (rural and urban)
- 54% crashes on Local Roads (rural and urban)

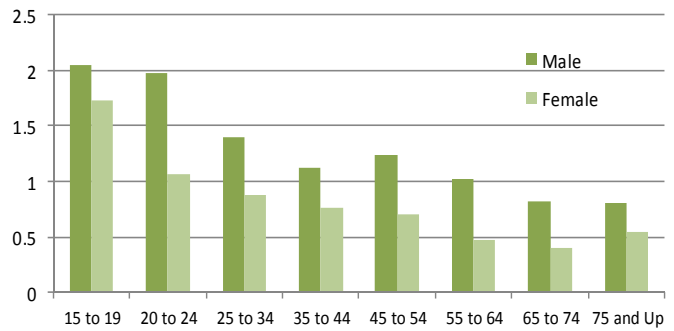
Statewide Crash Summary

Top Ten Counties



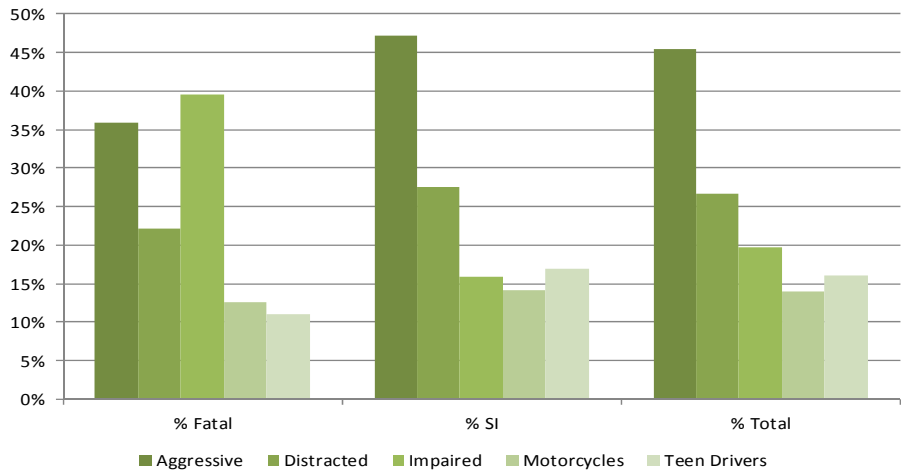
The graph shows the percent of crashes in the county compared to the percent of licensed drivers in a county.

Involvement by Age of Drivers

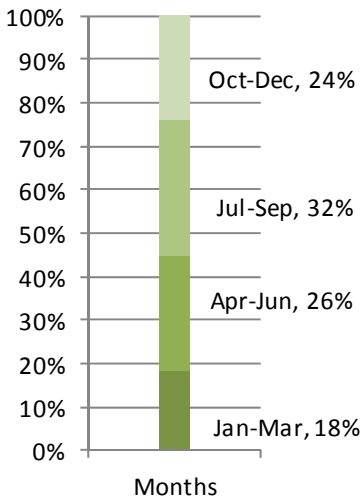


Involvement by gender and age. Involvement is determined by dividing the percentage of the drivers involved in crashes by the percentage of licensed drivers. The expected involvement is 1. A value greater than 1 indicates that the group is over involved in crashes.

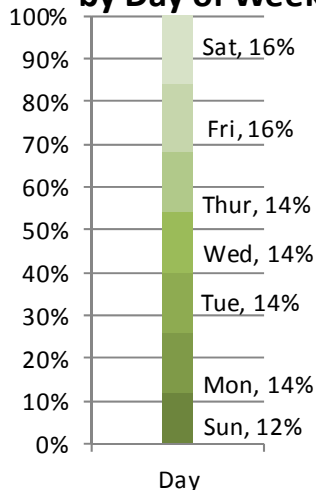
This is a breakdown of crash focus areas and the percentage related to a fatal or serious injury crash. This list does not include all focus areas, just five of the main areas.



Fatal and SI Crashes by Month



Fatal and SI Crashes by Day of Week



Time of Day

