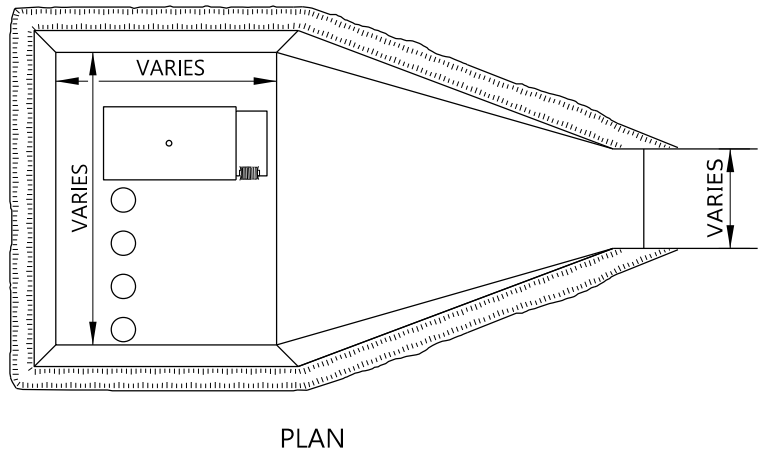
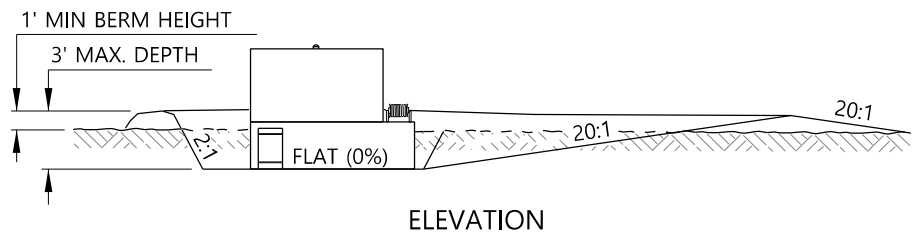


**PETROLEUM STORAGE AREA - TYPE 1**



**PETROLEUM STORAGE AREA - TYPE 2**

**NOTES**

1. USE THIS DRAWING IN CONJUNCTION WITH THE ITD BEST MANAGEMENT PRACTICES MANUAL.
2. PROVIDE THE PETROLEUM STORAGE AREA FOR THE DURATION OF THE PROJECT.
3. PROVIDE A TYPE 1 OR TYPE 2 PETROLEUM STORAGE AREA WITH AN IMPERMEABLE PETROLEUM RESISTANT MEMBRANE IF PETROLEUM PRODUCTS ARE STORED ONSITE.
4. ENSURE THE TOTAL VOLUME OF THE BERMED AREA IS 110 PERCENT OF THE TOTAL CAPACITY OF THE STORAGE CONTAINERS INSIDE THE BERM.
5. NOTIFY THE ENGINEER AND THE HAZARDOUS MATERIALS COORDINATOR OF SOIL CONTAMINATION RESULTING FROM PETROLEUM SPILLS. COORDINATE REMOVAL PROCEDURES WITH THE ENGINEER AND HAZARDOUS MATERIAL COORDINATOR BEFORE PERFORMING THE WORK.
6. ENSURE RUNOFF AT THE EQUIPMENT STAGING AREA ENTRANCE IS RETAINED IN THE STAGING AREA.
7. REMOVE UNCONTAMINATED STORMWATER FROM INSIDE THE STORAGE AREA. TREAT CONTAMINATED STORMWATER AS A HAZARDOUS WASTE.
8. STORE INCOMPATIBLE MATERIALS IN SEPARATE STORAGE AREAS.
9. STORE MATERIALS IN THEIR ORIGINAL PACKAGING AND ON PALLETS.
10. DRAWING NOT TO SCALE.

REVISIONS								
NO.	DATE	BY	NO.	DATE	BY	NO.	DATE	BY
1	09-98	MSM						
2	10-10	KEH						
3	11-13	RDL						
4	01-23	RDL						

SCALES SHOWN ARE FOR 11" X 17" PRINTS ONLY  
 CADD FILE NAME: 212-15\_0423.dgn  
 DRAWING DATE: DECEMBER, 1995

**IDAHO TRANSPORTATION DEPARTMENT**  
 YOUR Safety→YOUR Mobility→YOUR Economic Opportunity  
 BOISE IDAHO

ORIGINAL SIGNED BY: MONICA CRIDER  
 HIGHWAY DESIGN ENGINEER

STANDARD DRAWING  
**PETROLEUM STORAGE AREA**  
 REQUIRES STD. DWG. 212-5

**ENGLISH**  
 STANDARD DRAWING NO. 212-15  
 SHEET 1 OF 1

ORIGINAL STORED AT: ITD, Headquarters 3311 West State Boise, Idaho