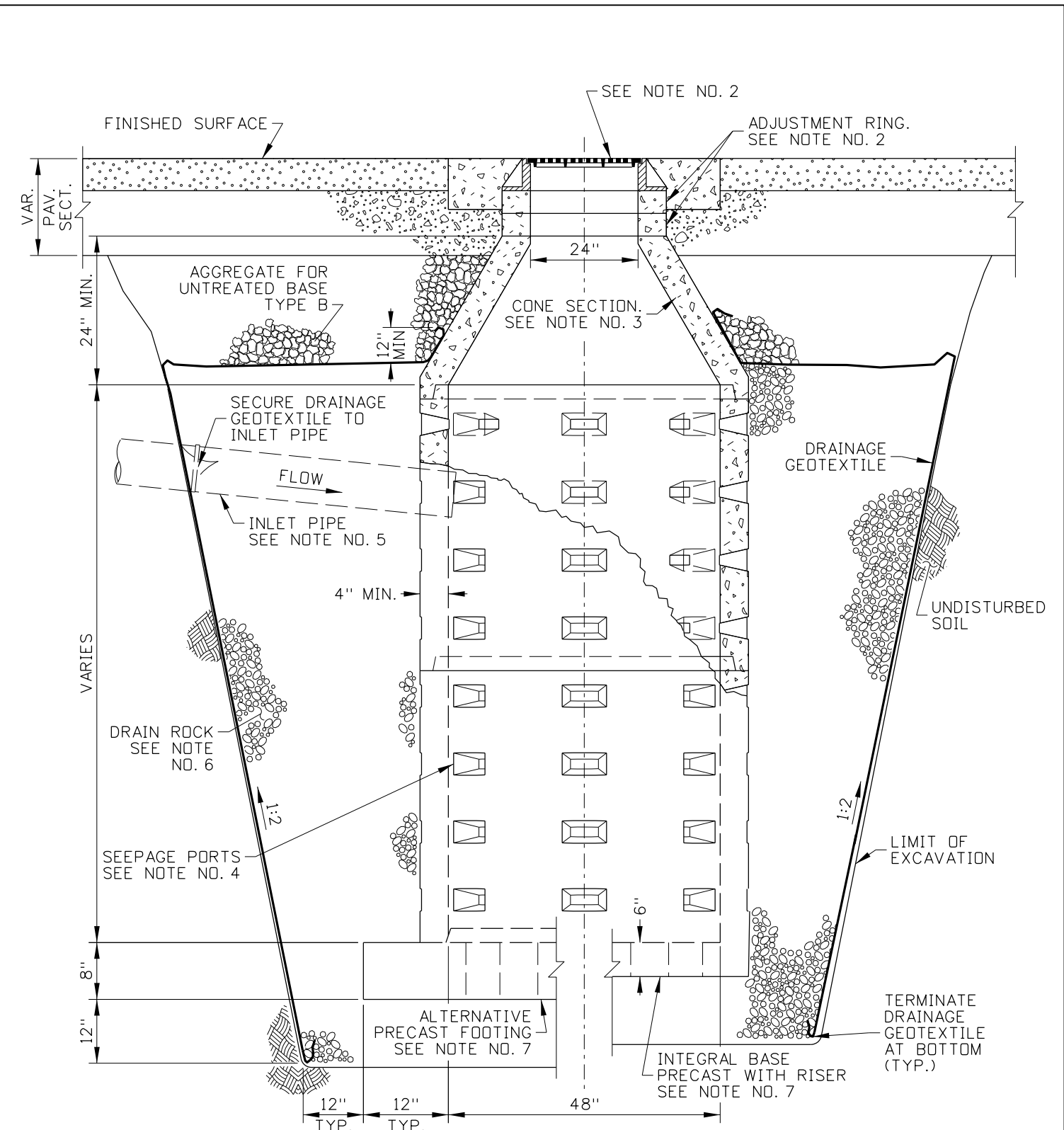


DRYWELL IN DRAINAGE FEATURE
(SEE NOTE NO. 1)



DRYWELL IN TRAVELED WAY
(SEE NOTE NO. 1)

REVISIONS							
NO.	DATE	BY	NO.	DATE	BY	NO.	DATE

SCALES SHOWN ARE FOR 11" X 17" PRINTS ONLY
 CADD FILE NAME: 605-35_0422.dgn
 DRAWING DATE: DECEMBER 2021

IDAHO TRANSPORTATION DEPARTMENT



BOISE IDAHO

ORIGINAL SIGNED BY: KEVIN SABLAN
 DESIGN/TRAFFIC SERVICES ENGINEER

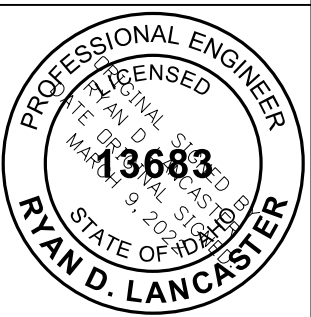
STANDARD DRAWING
DRYWELL
 REQUIRES STD. DWG. 605-13

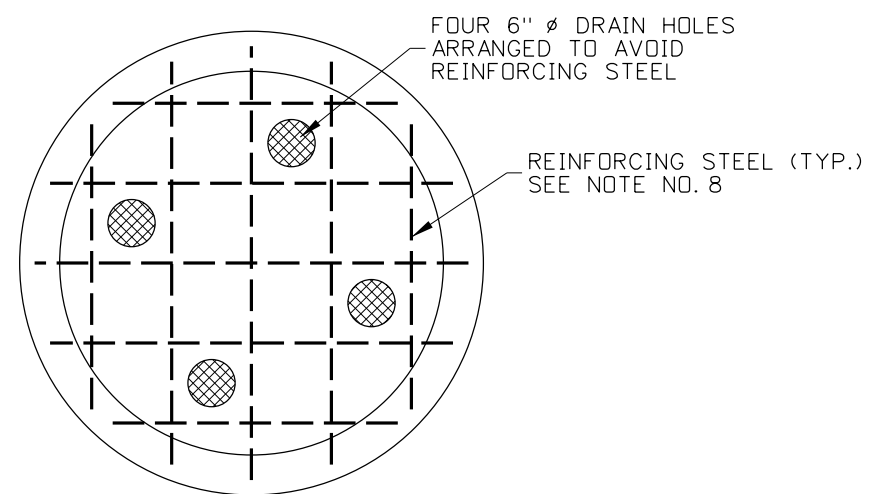
ORIGINAL STORED AT: ITD, Headquarters 3311 West State Boise, Idaho

English

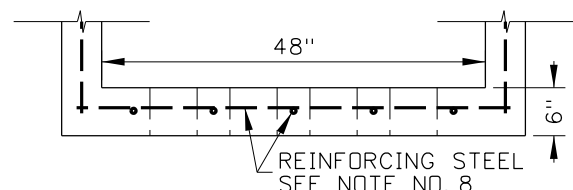
STANDARD DRAWING NO.
605-35

SHEET 1 OF 2



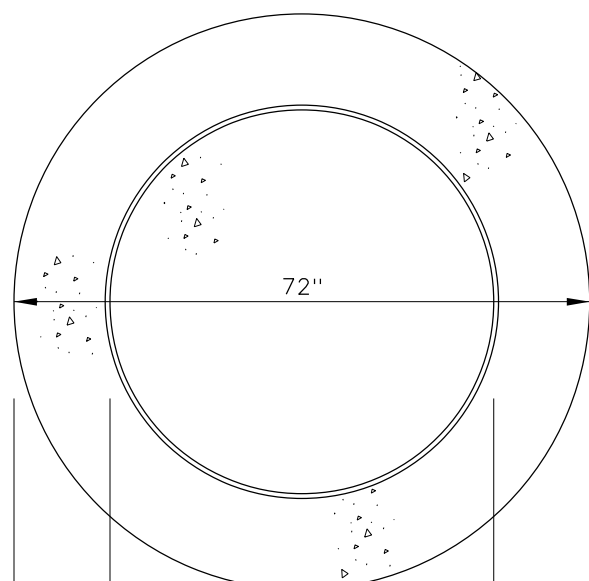


PLAN

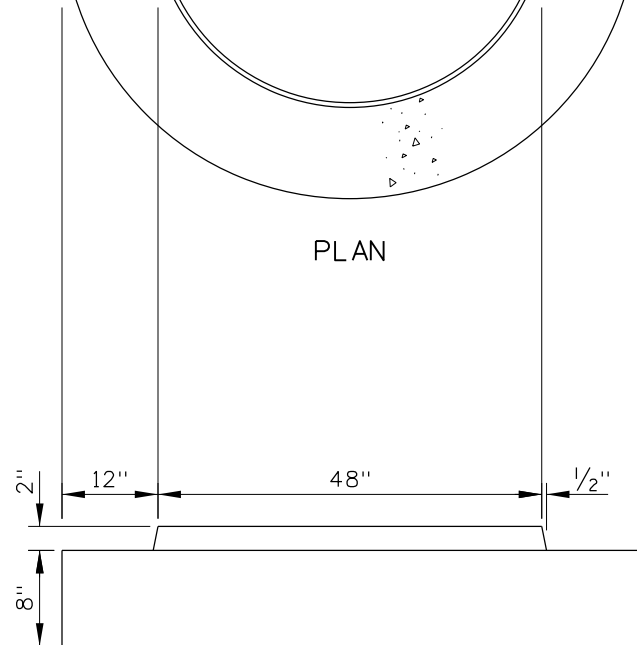


ELEVATION

INTEGRAL BASE DETAIL



PLAN



ELEVATION

ALTERNATIVE PRECAST FOOTING DETAIL

NOTES

1. DRYWELLS MAY BE INSTALLED IN DRAINAGE FEATURES, SUCH AS THE SWALE SHOWN, OR IN THE TRAVELED WAY.
2. SEE STANDARD DRAWING 605-13 FOR MANHOLE FRAME, MANHOLE COVER, MANHOLE COLLAR, AND MANHOLE ADJUSTMENT RINGS. USE CONCENTRIC OR ECCENTRIC MANHOLE CONE SECTION.
3. USE CONCENTRIC OR ECCENTRIC MANHOLE CONE SECTION.
4. SEEPAGE PORT ORIENTATION VARIES AMONG MANUFACTURERS. THE SEEPAGE PORT DIMENSIONS SHOWN ARE APPROXIMATE. ENSURE SEEPAGE PORTS ARE DISTRIBUTED EVENLY AROUND DRYWELL CIRCUMFERENCE.
5. IF INLET PIPE IS USED, CONNECT PIPE TO DRYWELL USING PRECAST HOLE OR CORE DRILLED HOLE AND FILL GAP BETWEEN PIPE AND DRYWELL WITH GROUT, TYPE B.
6. PROVIDE DRAIN ROCK, SIZE 4 OR 5 COARSE AGGREGATE FOR CONCRETE.
7. FOR DEPTHS OVER 16'-2", USE ALTERNATIVE PRECAST FOOTING.
8. PROVIDE REINFORCING STEEL THROUGHOUT DRYWELL. TO AVOID CLUTTER ON THE DRAWING REINFORCING STEEL IS ONLY SHOWN IN THE INTEGRAL BASE.
9. DRAWING NOT TO SCALE.

REVISIONS								
NO.	DATE	BY	NO.	DATE	BY	NO.	DATE	BY

SCALES SHOWN
ARE FOR 11" X 17"
PRINTS ONLY

CADD FILE NAME:
605-35_0422.dgn

DRAWING DATE:
DECEMBER 2021

**IDAHO
TRANSPORTATION
DEPARTMENT**



BOISE IDAHO

ORIGINAL SIGNED BY: KEVIN SABLAN
DESIGN/TRAFFIC SERVICES ENGINEER

STANDARD DRAWING

DRYWELL

REQUIRES STD. DWG. 605-13

ORIGINAL STORED
AT: ITD,
Headquarters
3311 West State
Boise, Idaho

English

STANDARD DRAWING NO.
605-35

SHEET 2 OF 2

