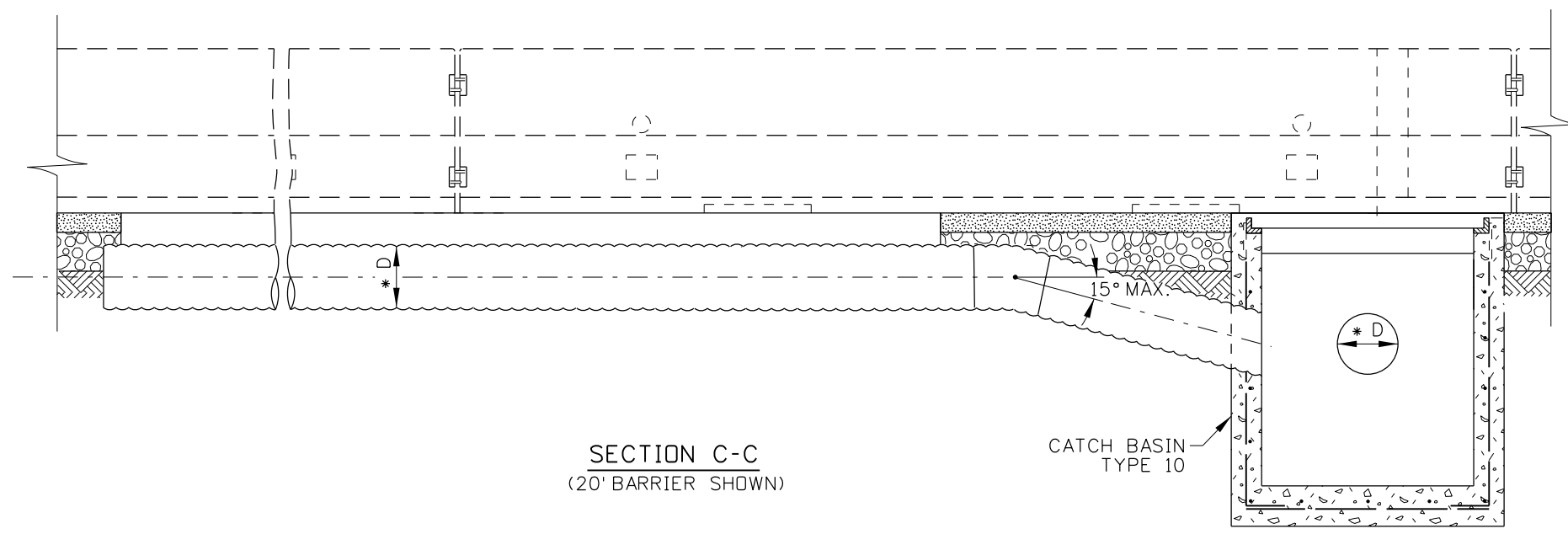
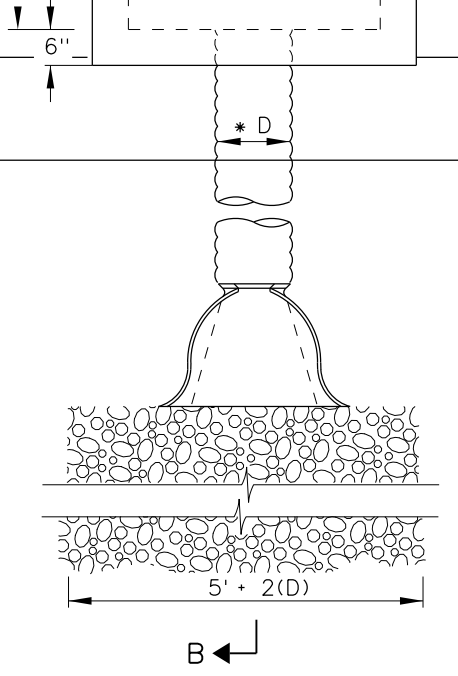
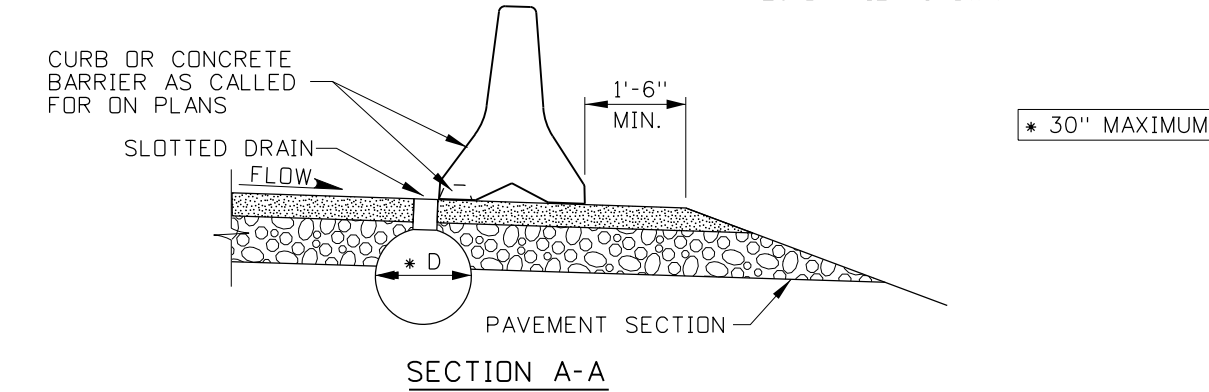


PLAN
(20' BARRIER SHOWN)



NOTES

1. LOCATE CATCH BASINS TO INTERCEPT ROADWAY DRAINAGE PRIOR TO FLOWING ONTO A BRIDGE AND INTERCEPT DRAINAGE THAT HAS COLLECTED ON BRIDGE OR AS SHOWN ON THE PLANS.
2. SEE THE DESIGN MANUAL FOR FURTHER INFORMATION ON RUNOFF DRAIN OR EMBANKMENT PROTECTOR.
3. USE CONCRETE BARRIER WITH SEALED SCUPPERS ON THE UPSTREAM FROM THE GRATE OPENING. USE GROUT OR PLANT MIX TO SEAL THE SCUPPERS ALONG THE DRAIN RUNOFF AREA. 10' OR 20' CONCRETE BARRIER MAY BE USED.
4. DO NOT USE IN TEMPORARY OR PERMANENT TRAFFIC LANES. USE ONLY WHERE TRAFFIC IS OCCASIONAL, SUCH AS ON HIGHWAY SHOULDERS.
5. NOT TO SCALE.

REVISIONS								
NO.	DATE	BY	NO.	DATE	BY	NO.	DATE	BY
1	12-01	MSM						
2	7-02	MSM						
3	3-05	MSM						
4	9-10	PLR						
5	12-12	RDL						

SCALES SHOWN ARE FOR 11" X 17" PRINTS ONLY
 CADD FILE NAME: 607-2_0113.dgn
 DRAWING DATE: DECEMBER, 1993

IDAHO TRANSPORTATION DEPARTMENT

BOISE IDAHO

ORIGINAL SIGNED BY: LOREN THOMAS
 HIGHWAYS PROGRAM OVERSIGHT ENGINEER

ORIGINAL SIGNED BY: TOM COLE
 CHIEF ENGINEER

STANDARD DRAWING

EMBANKMENT PROTECTOR WITH SLOTTED DRAIN

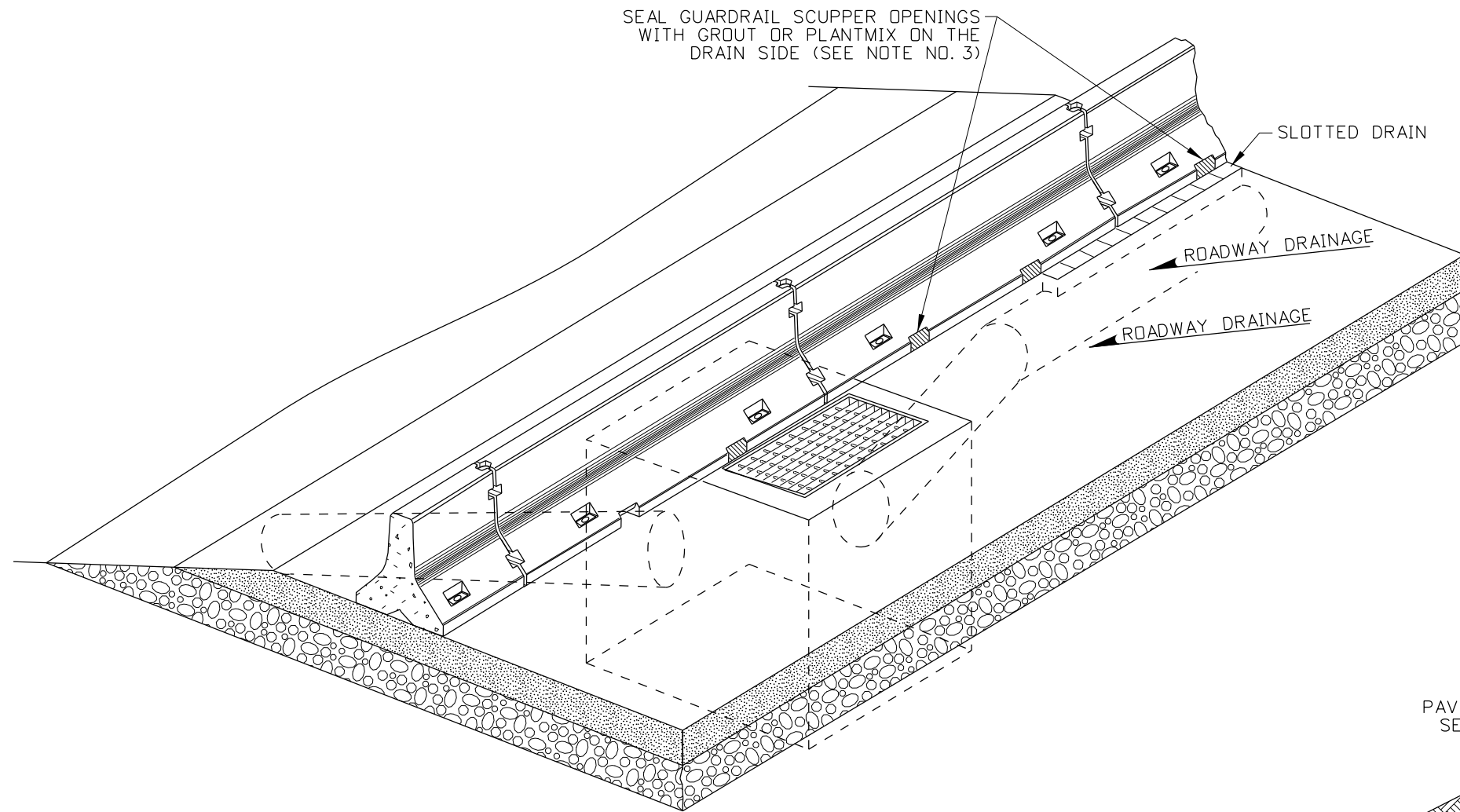
REQUIRES STD. DWG. 605-27

English

STANDARD DRAWING NO.
607-2

SHEET 1 OF 2

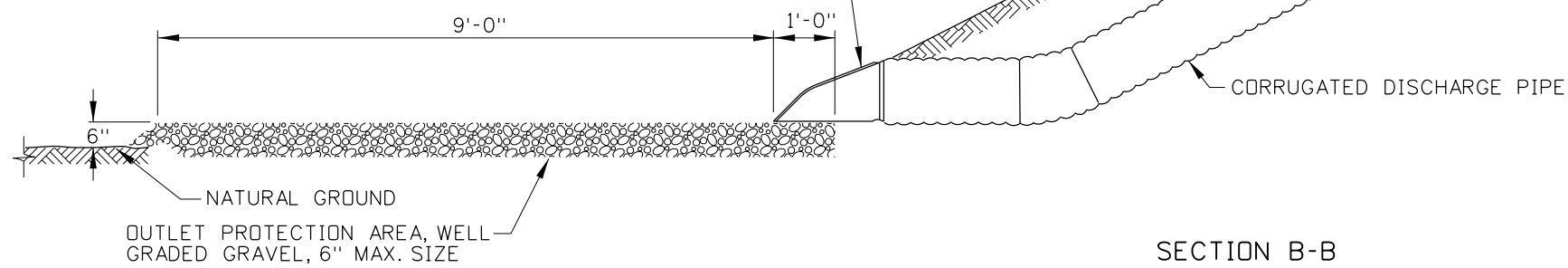
ORIGINAL STORED AT: ITD, Headquarters 3311 West State Boise, Idaho



ISOMETRIC VIEW
(10' BARRIER SHOWN)

1' MIN. COVER FOR CORRUGATED METAL PIPE
2' MIN. COVER FOR POLYETHYLENE PIPE

GALVANIZED STEEL APRON
(SEE STD. DWG. 608-1)



SECTION B-B

REVISIONS								
NO.	DATE	BY	NO.	DATE	BY	NO.	DATE	BY
1	12-01	MSM						
2	7-02	MSM						
3	3-05	MSM						
4	9-10	PLR						
5	12-12	RDL						

SCALES SHOWN
ARE FOR 11" X 17"
PRINTS ONLY

CADD FILE NAME:
607-2_0113.dgn

DRAWING DATE:
DECEMBER, 1993

**IDAHO
TRANSPORTATION
DEPARTMENT**



BOISE IDAHO

ORIGINAL SIGNED BY: LOREN THOMAS
HIGHWAYS PROGRAM OVERSIGHT ENGINEER

ORIGINAL SIGNED BY: TOM COLE
CHIEF ENGINEER

STANDARD DRAWING

**EMBANKMENT PROTECTOR
WITH SLOTTED DRAIN**

REQUIRES STD. DWG. 605-27

English

STANDARD DRAWING NO.
607-2

SHEET 2 OF 2

ORIGINAL STORED
AT: ITD,
Headquarters
3311 West State
Boise, Idaho