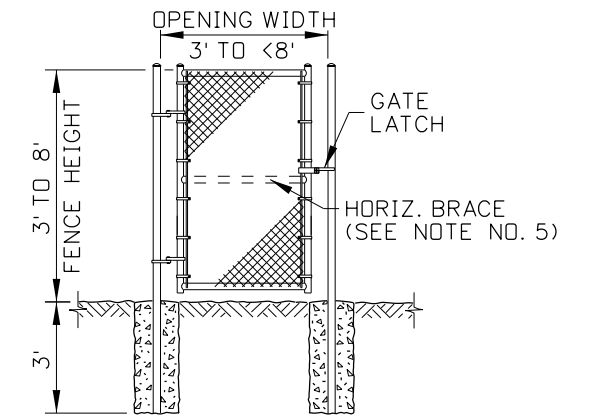
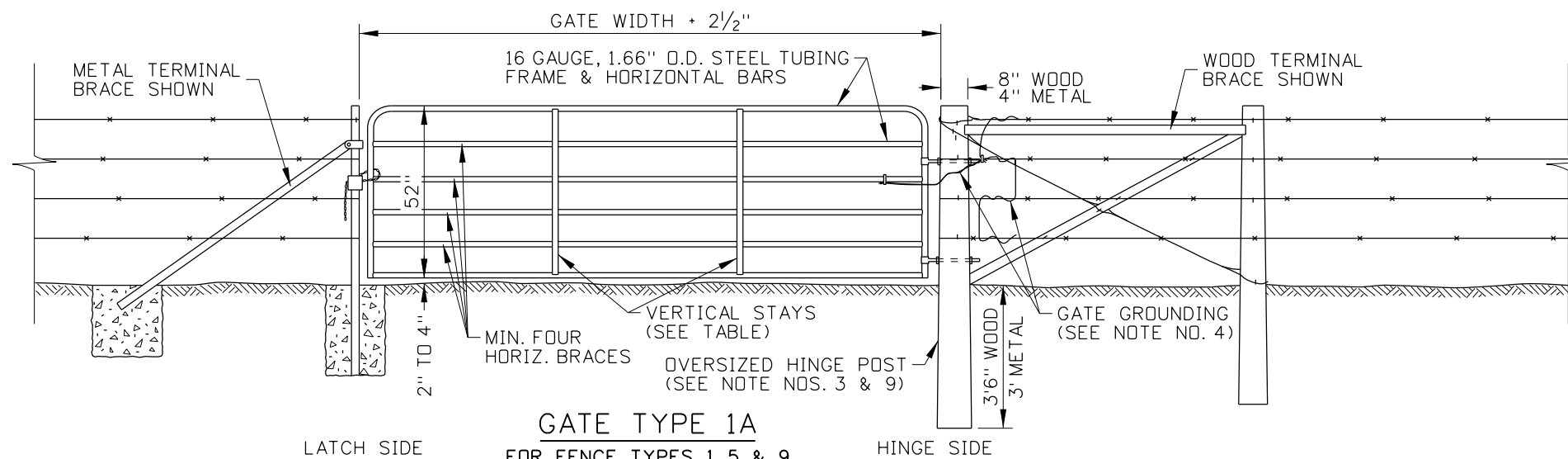


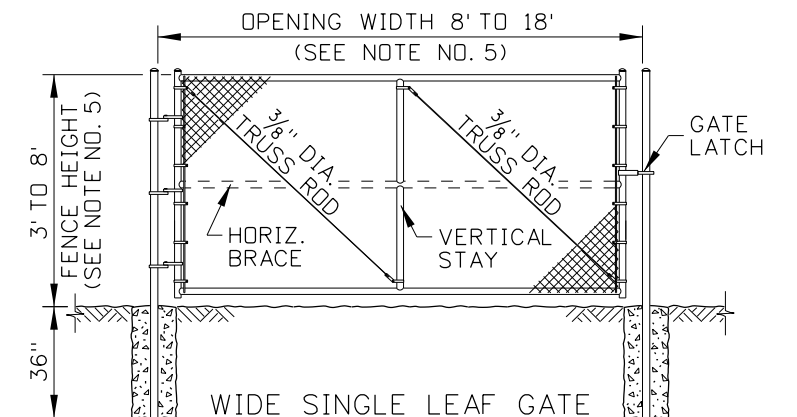
GATE TYPE 1
FOR FENCE TYPES 1, 5, & 9



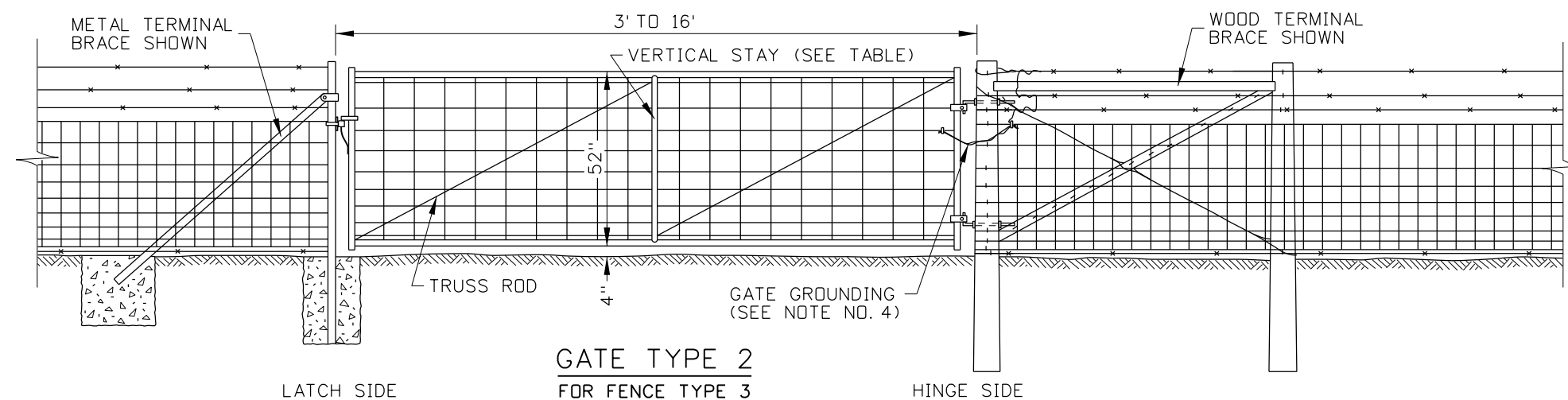
NARROW SINGLE LEAF GATE



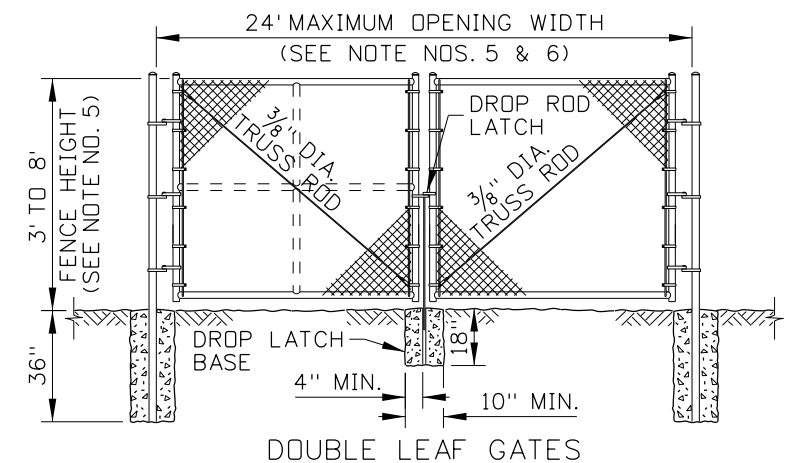
GATE TYPE 1A
FOR FENCE TYPES 1, 5, & 9



WIDE SINGLE LEAF GATE

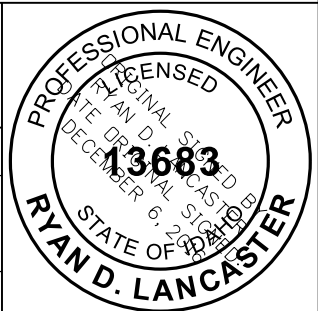


GATE TYPE 2
FOR FENCE TYPE 3



GATE TYPE 3
FOR FENCE TYPE 4

ORIGINAL STORED AT: ITD, Headquarters 3311 West State Boise, Idaho



REVISIONS							
NO.	DATE	BY	NO.	DATE	BY	NO.	DATE

SCALES SHOWN ARE FOR 11" X 17" PRINTS ONLY
CADD FILE NAME: 610-2_1216.dgn
DRAWING DATE: NOVEMBER, 2016

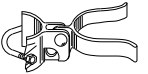
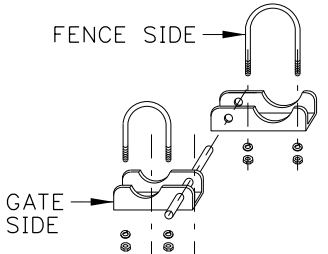
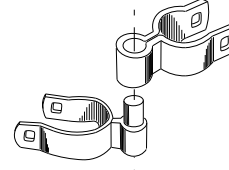
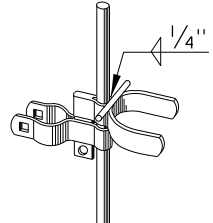
IDAHO TRANSPORTATION DEPARTMENT
BOISE IDAHO

ORIGINAL SIGNED BY: TED MASON
DESIGN/TRAFFIC SERVICES ENGINEER

STANDARD DRAWING
GATES
REQUIRES STD. DWGS. 610-1 & 610-3

English
STANDARD DRAWING NO.
610-2
SHEET 1 OF 2

CHAIN LINK FENCE GATE HARDWARE TABLE

GATE FORK LATCH		MIN. 1/8" GALVANIZED PRESSED STEEL OR MALLEABLE FERROUS ALLOY. ONE LATCH PER EACH SINGLE GATE WITH BENT MIN. 3/8" DIA. ATTACHMENT BOLT, WASHER & NUT.
HEAVY GATE HINGE		MIN. 1/8" GALVANIZED PRESSED STEEL WITH TWO 3/8" U-BOLTS, LOCK WASHER & NUTS PER HINGE. USE 2 HINGES PER GATE LEAF UP TO 8' IN WIDTH AND 3 HINGES PER GATE LEAF WIDTHS GREATER THAN 8' (THESE HINGES ARE RECOMMENDED FOR MAINTENANCE & COMMERCIAL INSTALLATIONS).
RESIDENTAL GATE HINGE		MIN. 1/8" GALVANIZED PRESSED STEEL WITH 3/8" DIA. x 3" CARRIAGE BOLTS, LOCK WASHER & NUTS PER HINGE. USE 2 HINGES PER GATE LEAF UP TO 6' IN HEIGHT AND 3 HINGES PER GATE LEAF HEIGHTS GREATER THAN 6'.
INDUSTRIAL DROP ROD FORK & GUIDE		MIN. 1/8" GALVANIZED PRESSED STEEL. DROP ROD GUIDE INCLUDES 3/8" x 3" CARRIAGE BOLT WITH LOCK WASHER & NUT. DROP ROD FORK IS TO BE WELDED TO ROD & PAINTED WITH AN APPROVED ZINC RICH PAINT.

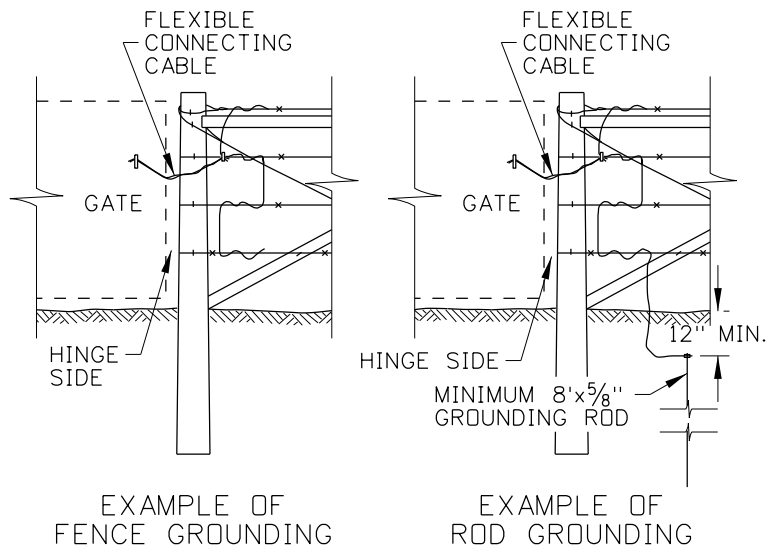
GATE GROUNDING TABLE			
FENCE DIST. FROM TRANSMISSION LINE	kV	GATE TYPE	GROUNDING TYPE
0' - 100'	500	1A, 2, 3	ROD
100' - 200'	500	1A, 2, 3	FENCE
0' - 100'	345	1A, 2, 3	ROD
100' - 150'	345	1A, 2, 3	FENCE
50' - 100'	230	1A, 2, 3	FENCE

GATE VERTICAL STAY TABLE		
GATE TYPE	GATE WIDTH	NO. OF VERT. STAYS
TYPE 1	4' TO 6'	0
	8' TO 12'	1
	14' TO 16'	2
TYPE 1A	4' TO 6'	0
	8' TO 12'	1
	14' TO 16'	2
TYPE 2	3' TO 7'	0
	8' TO 16'	1
	3' TO 7'	0
TYPE 3	8' TO 15'	1
	16' TO 18'	2

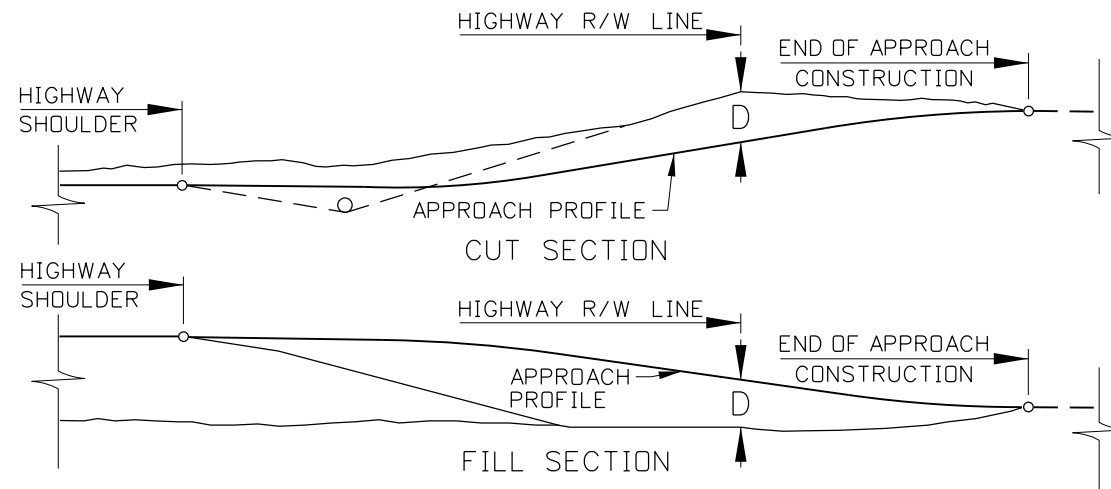
GATE HORIZONTAL BRACE TABLE		
GATE TYPE	GATE HEIGHT	NO. OF HORIZ. BRACES
TYPE 1A	4.33'	4
TYPE 3	4' TO 5'	0
	6' TO 8'	1

NOTES

- CONSTRUCT GATES FROM THE MATERIALS SHOWN ON FENCES STANDARD DRAWING UNLESS OTHERWISE SHOWN.
- ALTERNATE GATE DESIGNS MAY BE USED WITH ENGINEER APPROVAL.
- CONSTRUCT MATCHING METAL OR WOOD TERMINAL BRACES ON BOTH SIDES OF THE GATE OPENING. MODIFY THE TERMINAL BRACE ON THE HINGE SIDE OF TYPE 1A GATES.
- GROUND GATES THAT ARE NEAR POWER TRANSMISSION LINES OR THAT PASS UNDER TRANSMISSION LINES. GROUND BY CONNECTING THE HINGE SIDE OF THE GATE TO THE FENCE OR TO THE FENCE AND A GROUNDING ROD. SEE THE GATE GROUNDING TABLE AND GATE GROUNDING DETAILS. ENSURE THAT THE GATE IS GROUNDED WITH A FLEXIBLE COPPER CABLE. TYPE 1 GATES DO NOT NEED TO BE GROUNDED.
- CONSTRUCT VERTICAL STAYS AND HORIZONTAL BRACES IN ACCORDANCE WITH THE GATE VERTICAL STAY TABLE AND THE GATE HORIZONTAL BRACE TABLE.
- WHERE TWO TYPE 1A, TYPE 2, OR TYPE 3 GATES ARE USED IN A SINGLE OPENING, PROVIDE A DROP ROD TO SECURE THE GATES.
- ON THE GATE LOCATION DETAIL, WHEN D IS 5' OR LESS, INSTALL GATES AT THE RIGHT-OF-WAY LINE. WHEN D IS GREATER THAN 5', INSTALL GATES AT THE END OF THE APPROACH CONSTRUCTION OR AS OTHERWISE DIRECTED BY THE ENGINEER. IF INSTALLED AT THE END OF THE APPROACH, ANGLE AND INSTALL RIGHT-OF-WAY FENCE ALONG THE EDGE OF THE APPROACH CUT OR FILL SLOPE.
- TYPE 1 GATES:
 - CONSTRUCT GATE ENDS AND VERTICAL STAYS FROM A SECTION OF METAL FENCE POST OR ROUND WOOD POST 2 1/2" TO 3" IN DIAMETER. PLACE LARGER WOODEN STAYS AT THE GATE ENDS.
 - ATTACH WIRE LOOPS MADE WITH A DOUBLE WOVEN 9 GAUGE BARBLESS WIRE OR A SUITABLE CHAIN. ADJUST THE LOOPS SO THAT THE GATE IS TAUT WHEN CLOSED. FASTEN THE LOOPS TO THE ADJACENT LATCH/HINGE POST.
 - STAPLE THE STAYS AND END POSTS TO THE CONNECTING WIRES.
- TYPE 1A GATES:
 - USE A MODIFIED METAL OR WOOD POST ON THE HINGE SIDE. USE A 4" DIAMETER, 7'-6" METAL TUBE OR A 8" DIAMETER, 8' WOOD POST. IF THE METAL POST IS USED, SET THE POST IN AN 18" SQUARE OR ROUND FOUNDATION.
 - ENSURE THAT HINGES ON GATES WIDER THAN 10' HAVE LEVELING THREADS ON A 3/4" DIAMETER OR LARGER ROD.
 - ENSURE THAT LATCHES ARE LOCKABLE.
 - CLEAR THE GROUND NEAR THE GATE SO THAT THE GATE CAN SWING 90° IN EACH DIRECTION.
- TYPE 2 GATES:
 - FABRICATE GATE FRAMES WITH 1.05" D.D. GALVANIZED STEEL TUBING WITH 0.095" WALL THICKNESS OR 1" DIAMETER GALVANIZED PIPE.
 - USE 12.5 GAUGE OR HEAVIER GALVANIZED WIRE MESH.
 - EQUIP GATE WITH AN ADJUSTABLE DIAGONAL TRUSS ROD. THE TRUSS ROD TIGHTENER AND NON-TIGHTENING END OF THE TRUSS ROD MAY BE WELDED TO THE GATE.
 - USE GALVANIZED MALLEABLE STEEL HINGES AND LATCHES.
 - PAINT WELDS WITH ITD PAINT FORMULA NO. 2.
 - CLEAR THE GROUND NEAR THE GATE SO THAT THE GATE CAN SWING 90° IN EACH DIRECTION.
- TYPE 3 GATES:
 - CHAIN LINK FENCE HARDWARE MAY VARY SOMEWHAT FROM THAT SHOWN. ENSURE THAT THE HARDWARE AND MATERIALS USED ARE UNIFORM AND COMPATIBLE.
 - PAINT WELDS WITH ITD PAINT FORMULA NO. 2.
 - CLEAR THE GROUND NEAR THE GATE SO THAT THE GATE CAN SWING 90° IN EACH DIRECTION.
- DRAWING NOT TO SCALE.



GATE GROUNDING DETAILS



GATE LOCATION DETAIL
(SEE NOTE NO. 7)

REVISIONS							
NO.	DATE	BY	NO.	DATE	BY	NO.	DATE

SCALES SHOWN ARE FOR 11" X 17" PRINTS ONLY
CADD FILE NAME: 610-2_1216.dgn
DRAWING DATE: NOVEMBER, 2016

IDAHO TRANSPORTATION DEPARTMENT



BOISE IDAHO

ORIGINAL SIGNED BY: TED MASON
DESIGN/TRAFFIC SERVICES ENGINEER

STANDARD DRAWING
GATES
REQUIRES STD. DWGS. 610-1 & 610-3

ORIGINAL STORED AT: ITD, Headquarters 3311 West State Boise, Idaho

English
STANDARD DRAWING NO. 610-2
SHEET 2 OF 2

