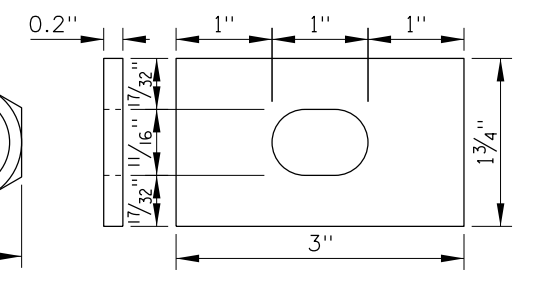
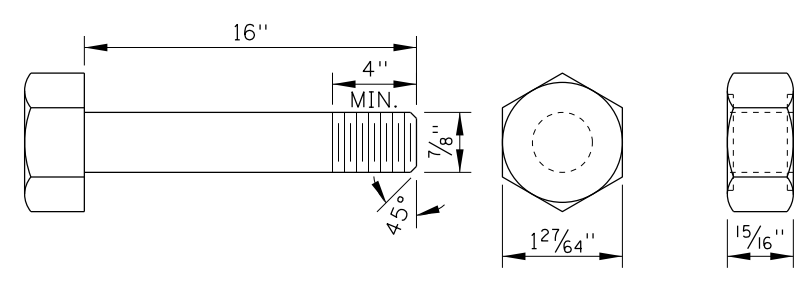
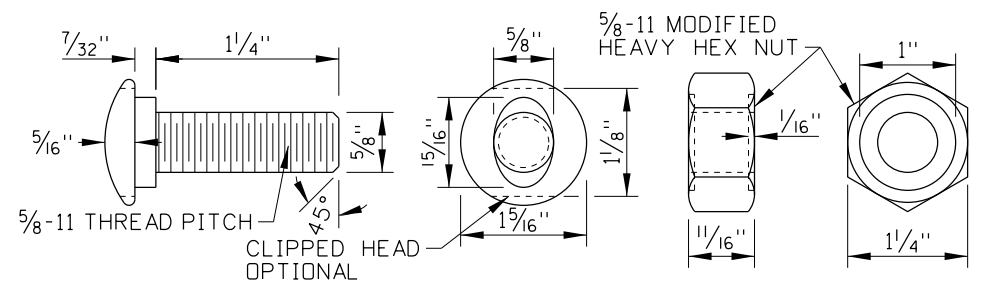
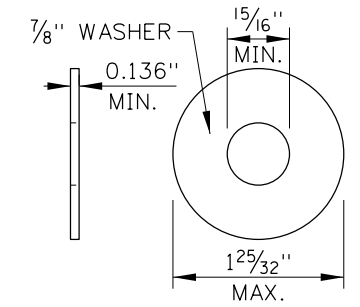
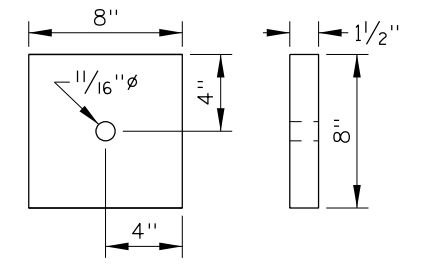
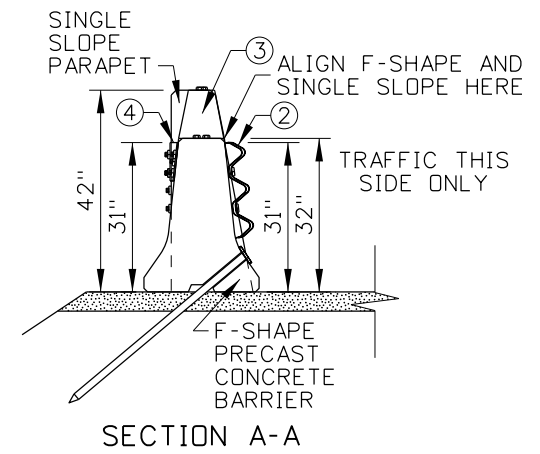
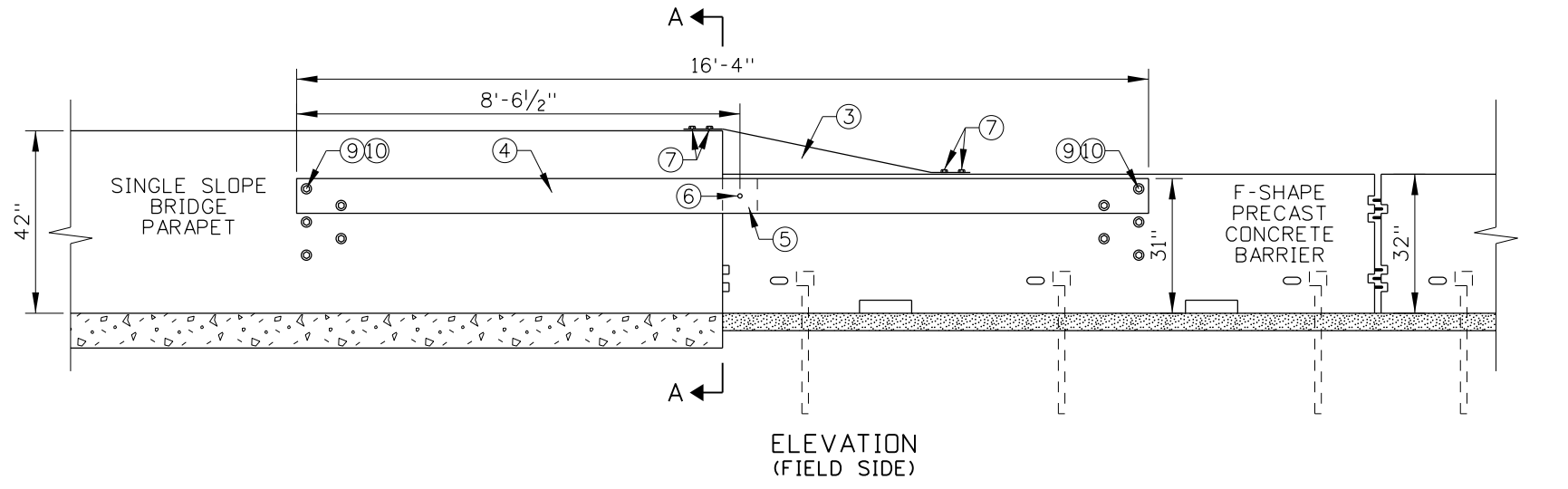
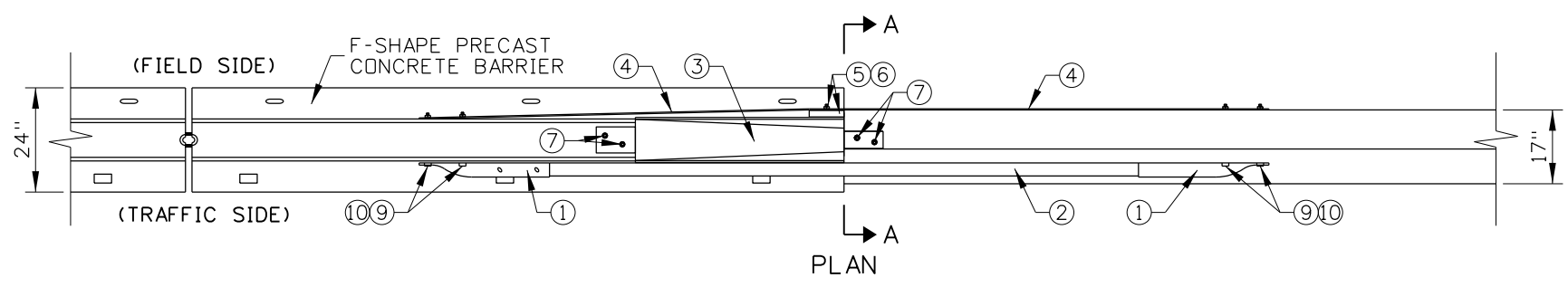
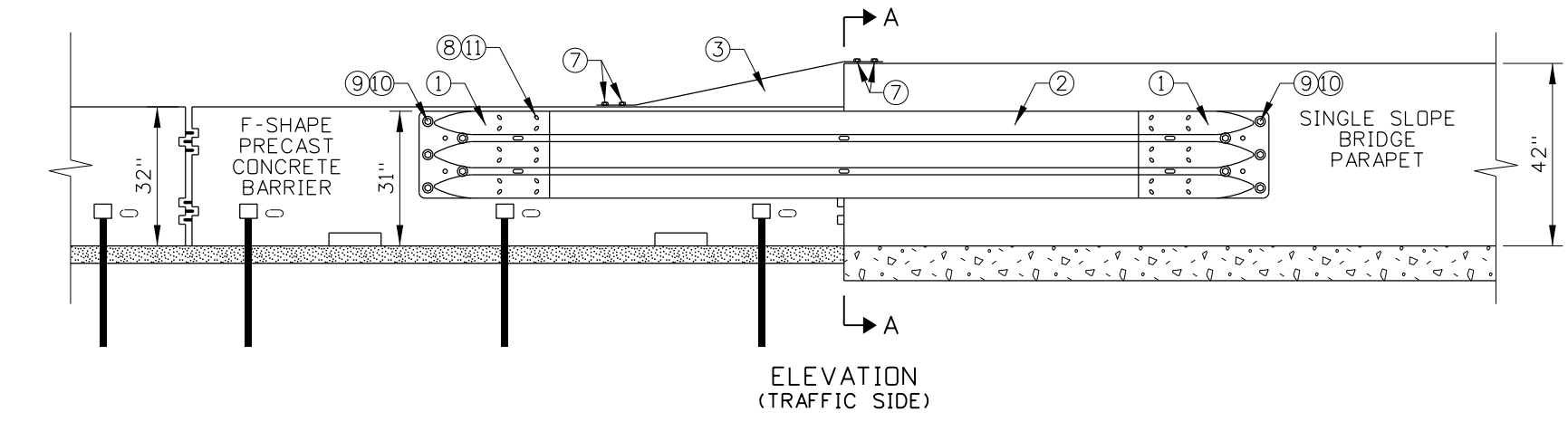


F-SHAPE TO SINGLE SLOPE TRANSITION HARDWARE COMPONENTS TABLE			
ITEM NO.	COMPONENT DESCRIPTION	QTY.	TF-13 NAME
①	THRIE-BEAM TERMINAL CONNECTOR	2	RTE01b
②	2-SPACE NESTED THRIE-BEAM GUARDRAIL	2	RTM02b
③	TRANSITION CAP	1	-
④	FIELD SIDE STRAP	1	-
⑤	8" x 8" x 1 1/2" WOOD SPACER BLOCK	1	-
⑥	5/8" x 4" CARRIAGE BOLT AND NUT (NOT SHOWN)	1	-
⑦	1/2" x 6 1/2" ANCHOR BOLT (NOT SHOWN)	4	-
⑧	5/8" GUARDRAIL SPLICE BOLT AND RECESSED NUT	24	FBB01
⑨	7/8" x 16" STRUCTURAL HEX BOLT & NUT	10	FBX22b
⑩	7/8" HARDENED ROUND WASHER (NOT SHOWN)	10	FWC22b
⑪	RECTANGULAR GUARDRAIL PLATE WASHER	24	FWR03



REVISIONS							
NO.	DATE	BY	NO.	DATE	BY	NO.	DATE

SCALES SHOWN
ARE FOR 11" X 17"
PRINTS ONLY

CADD FILE NAME:
612-25_0419.dgn

DRAWING DATE:
MARCH, 2019

IDAHO
TRANSPORTATION
DEPARTMENT

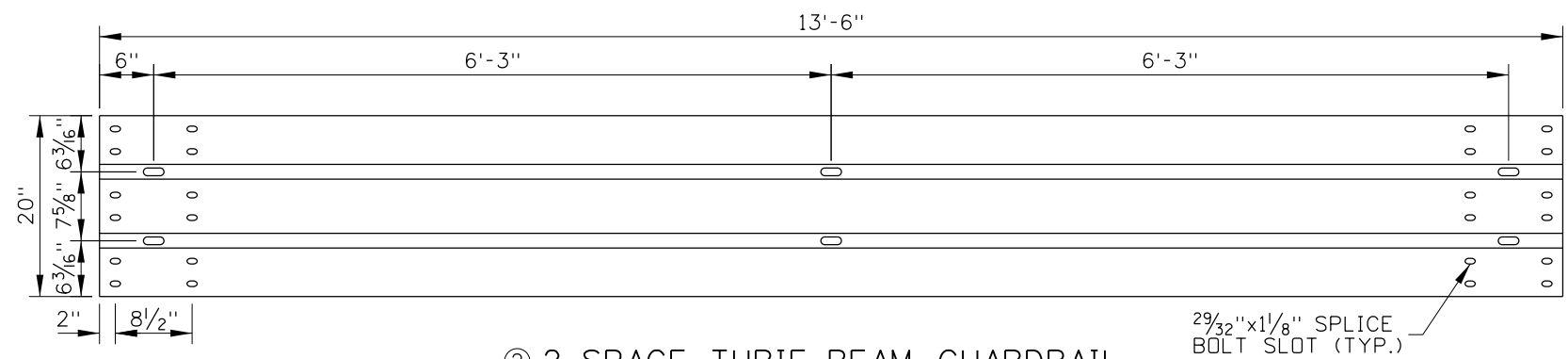
BOISE IDAHO

ORIGINAL SIGNED BY: KEVIN SABLAN
DESIGN/TRAFFIC SERVICES ENGINEER

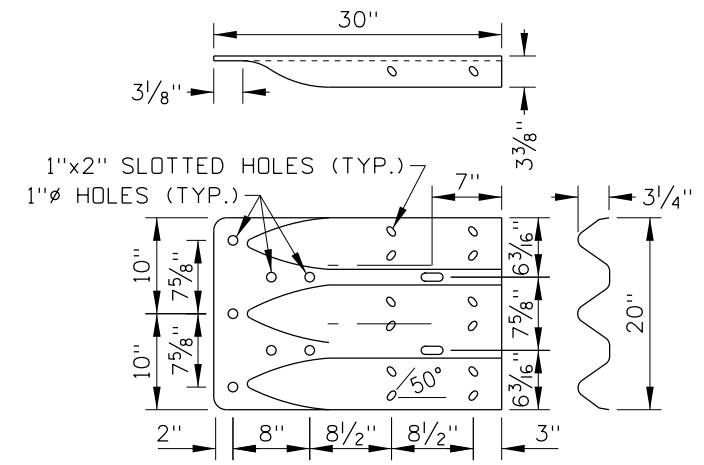
STANDARD DRAWING
F-SHAPE TO SINGLE SLOPE
TRANSITION

English
STANDARD DRAWING NO.
612-25
SHEET 1 OF 2

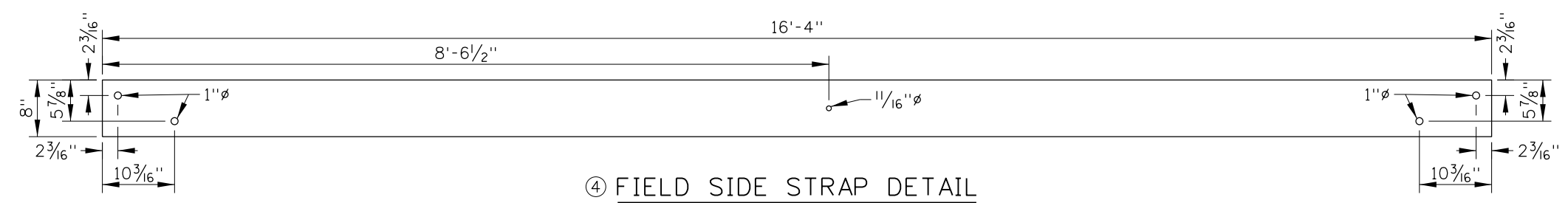
PROFESSIONAL ENGINEER
LICENSED
RYAN D. LANCASTER
STATE OF IDAHO
13683



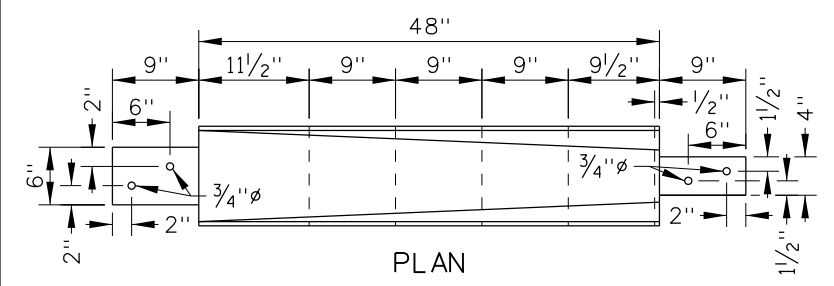
② 2-SPACE THRIE-BEAM GUARDRAIL
RTM02b



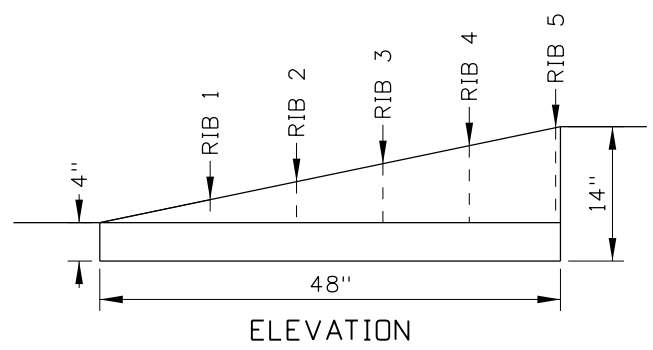
THRIE-BEAM
① TERMINAL CONNECTOR
RTE01b (10 GAUGE)



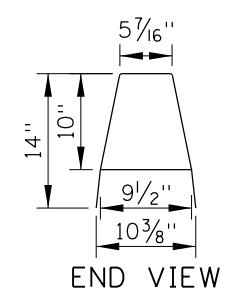
④ FIELD SIDE STRAP DETAIL
SEE NOTE NO. 5



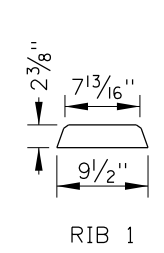
PLAN



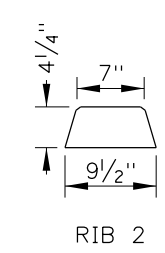
ELEVATION



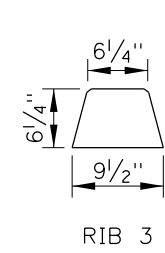
END VIEW



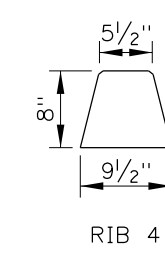
RIB 1



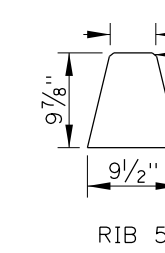
RIB 2



RIB 3



RIB 4



RIB 5

RIB DETAIL
SEE NOTE NO. 6

③ TRANSITION CAP DETAIL
SEE NOTE NOS. 4 THROUGH 6

NOTES

- USE THE TRANSITION TO CONNECT F-SHAPE PRECAST CONCRETE BARRIER TO 42" SINGLE SLOPE BRIDGE PARAPET. THE F-SHAPE TO SINGLE SLOPE TRANSITION SHOWN IS A MASH TEST LEVEL 3 SYSTEM.
- ANCHOR PIN THE LAST THREE F-SHAPE PRECAST CONCRETE BARRIER. THE PAVEMENT BENEATH THE PRECAST CONCRETE BARRIER CAN BE ASPHALT OR CONCRETE. SEE THE PRECAST CONCRETE BARRIER STANDARD DRAWING.
- CUT THE END LOOPS OFF OF THE PRECAST CONCRETE BARRIER CLOSEST TO THE SINGLE SLOPE BRIDGE PARAPET. BUTT THE PRECAST CONCRETE BARRIER UP AGAINST THE SINGLE SLOPE BRIDGE PARAPET AND ALIGN THE BARRIER FACES AT THE TOP TRAFFIC SIDE CORNER OF THE PRECAST CONCRETE BARRIER.
- THE TOP AND SIDES OF THE TRANSITION CAP MAY BE MANUFACTURED FROM SEPARATE PLATES AND WELDED TOGETHER AT THE JOINTS, A SINGLE BENT PLATE (BEND RADII 1/4" MAX.), OR A COMBINATION OF THE TWO.
- FABRICATE THE TRANSITION CAP AND FIELD SIDE STRAP FROM ASTM A36 STEEL. FABRICATE THE TRANSITION CAP WITH 1/8" THICK STEEL. FABRICATE THE FIELD SIDE STRAP WITH 1/4" THICK STEEL. GALVANIZE FABRICATED PARTS AFTER ASSEMBLY.
- CHAMFER THE TOP CORNERS OF RIBS WITH A 3/8" CHAMFER.
- INSTALL RECTANGULAR GUARDRAIL PLATE WASHERS UNDER GUARDRAIL NUTS AT THE SPLICE BETWEEN THE THRIE-BEAM GUARDRAIL AND THRIE-BEAM TERMINAL CONNECTOR. INSTALL UNDER THE BOLT HEAD ON UPSTREAM END AND UNDER NUT ON DOWNSTREAM END.
- DRAWING NOT TO SCALE.

REVISIONS							
NO.	DATE	BY	NO.	DATE	BY	NO.	DATE

SCALES SHOWN ARE FOR 11" X 17" PRINTS ONLY
CADD FILE NAME: 612-25_0419.dgn
DRAWING DATE: MARCH, 2019

IDAHO TRANSPORTATION DEPARTMENT

BOISE IDAHO

ORIGINAL SIGNED BY: KEVIN SABLAN
DESIGN/TRAFFIC SERVICES ENGINEER

STANDARD DRAWING
F-SHAPE TO SINGLE SLOPE TRANSITION

ORIGINAL STORED AT: ITD, Headquarters 3311 West State Boise, Idaho

English

STANDARD DRAWING NO. 612-25

SHEET 2 OF 2