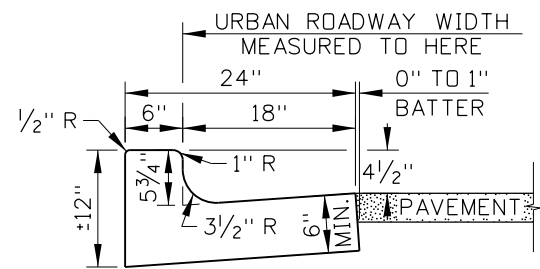
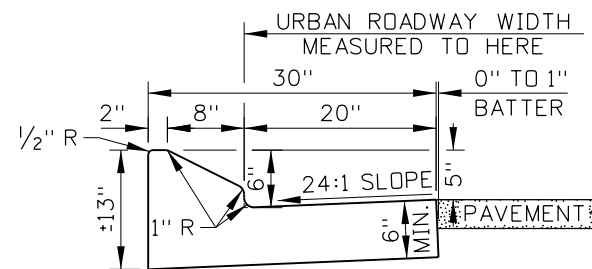


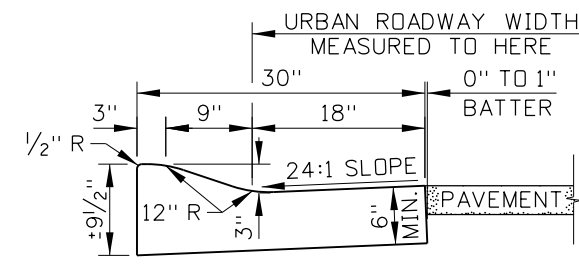
CURB AND GUTTER TYPE 1



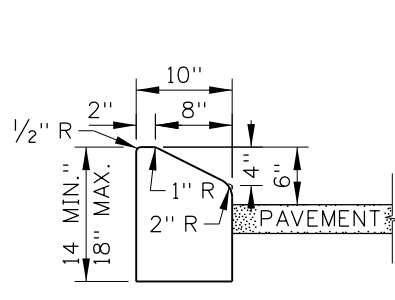
CURB AND GUTTER TYPE 2
(SEE NOTE NO. 4)



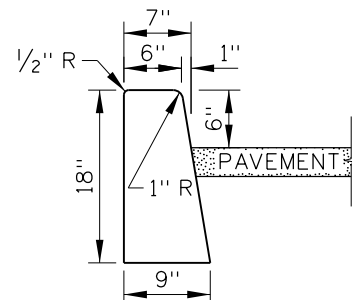
CURB AND GUTTER TYPE 3



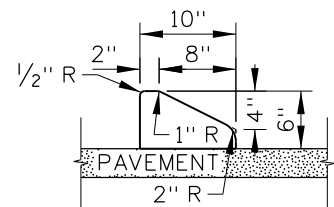
CURB AND GUTTER TYPE 4



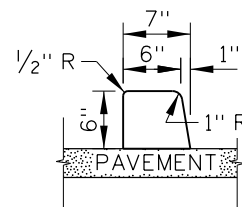
CURB TYPE 1



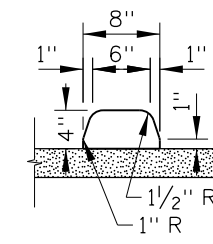
CURB TYPE 2



CURB TYPE 3
(SEE NOTE NO. 3)



CURB TYPE 4
(SEE NOTE NO. 3)



CURB TYPE 5
(SEE NOTE NO. 3)

NOTES

1. TRANSITION BETWEEN DIFFERENT TYPES OVER 10 FEET.
2. PROVIDE 4 INCHES OF AGGREGATE BASE UNDER CURB AND GUTTER, CURB, OR GUTTER UNLESS THE CURB IS PLACED ON PAVEMENT.
3. PORTLAND CEMENT CONCRETE CURB OR TRAFFIC SEPARATOR ON ASPHALT CONCRETE PAVEMENT:

PROVIDE A KEY IN THE PAVEMENT AT THE CENTERLINE OF THE CURB OR TRAFFIC SEPARATOR. SEE THE KEY DETAIL.

CONCRETE CURBS OR TRAFFIC SEPARATORS MAY BE PINNED TO THE PAVEMENT STRUCTURE IN LIEU OF THE KEY. DRILL THE PAVEMENT AND PLACE PINS BEFORE THE CURB OR TRAFFIC SEPARATOR IS CONSTRUCTED. SEE THE PIN DETAIL.

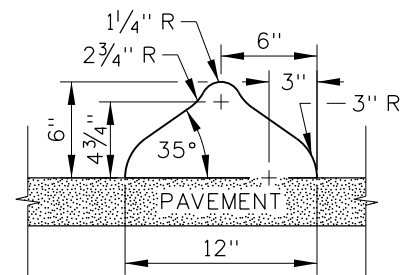
PORTLAND CEMENT CONCRETE CURB OR TRAFFIC SEPARATOR ON PORTLAND CEMENT CONCRETE PAVEMENT:

USE AN EPOXY BONDING AGENT. NO KEY IS NEEDED.

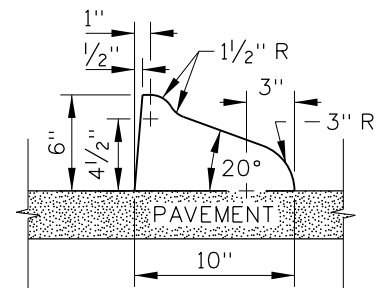
ASPHALT CONCRETE CURB OR TRAFFIC SEPARATOR ON ASPHALT CONCRETE PAVEMENT:

NO KEY IS NEEDED. ENSURE THAT THE CURB IS BONDED TO THE PAVEMENT.

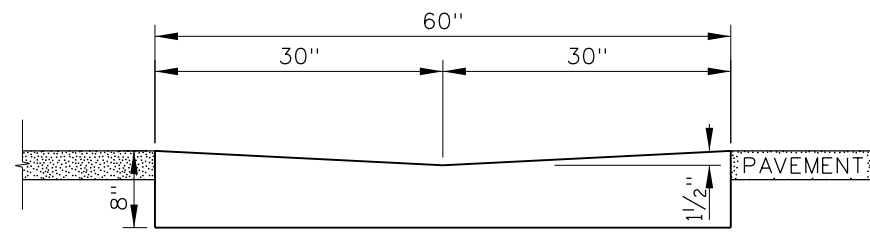
4. ENSURE THAT THE GUTTER SLOPE DOES NOT EXCEED 5 PERCENT AT CURB RAMPS.
5. TAPER THE LAST 6 FEET OF CURB AND GUTTER TYPES 1, 2, 3, AND 4 AND CURB TYPES 1 AND 2 DOWN TO A 1 INCH HEIGHT. TAPER CURB TYPES 3, 4, AND 5 AND TRAFFIC SEPARATORS TYPES 1 AND 2 DOWN TO A 1 INCH HEIGHT AT A 1:1 SLOPE.
6. DRAWING NOT TO SCALE.



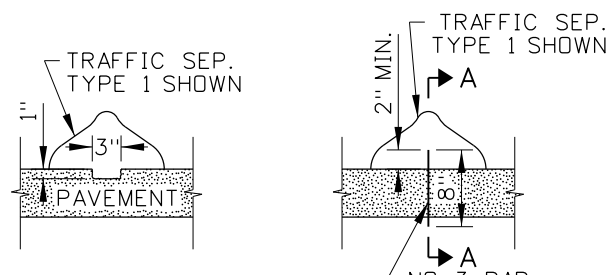
TRAFFIC SEPARATOR TYPE 1
(SEE NOTE NO. 3)



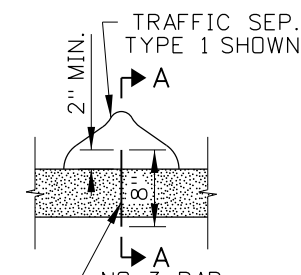
TRAFFIC SEPARATOR TYPE 2
(SEE NOTE NO. 3)



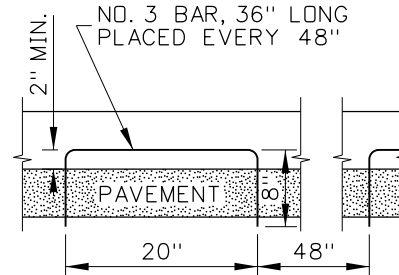
GUTTER TYPE 1



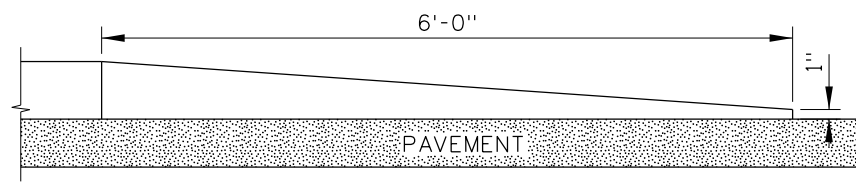
KEY DETAIL
(SEE NOTE NO. 3)



PIN DETAIL
(SEE NOTE NO. 3)

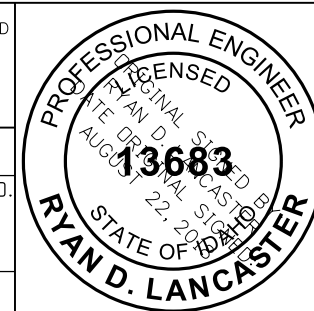


SECTION A-A



CURB TERMINUS DETAIL
(SEE NOTE NO. 5)

ORIGINAL STORED AT: ITD, Headquarters 3311 West State Boise, Idaho



REVISIONS								
NO.	DATE	BY	NO.	DATE	BY	NO.	DATE	BY
1	02-76		6	12-04	MSM	11	07-18	RDL
2	12-90	GB	7	06-05	MSM			
3	09-93	MSM	8	07-10	JAW			
4	12-94	MSM	9	11-14	RDL			
5	12-01	MSM	10	06-17	RDL			

SCALES SHOWN ARE FOR 11" X 17" PRINTS ONLY
CADD FILE NAME: 615-1_0818.dgn
DRAWING DATE: APRIL, 1961

IDAHO TRANSPORTATION DEPARTMENT
BOISE IDAHO

ORIGINAL SIGNED BY: KEVIN SABLAN
DESIGN/TRAFFIC SERVICES ENGINEER

STANDARD DRAWING
CURB AND GUTTER

English
STANDARD DRAWING NO. 615-1
SHEET 1 OF 1