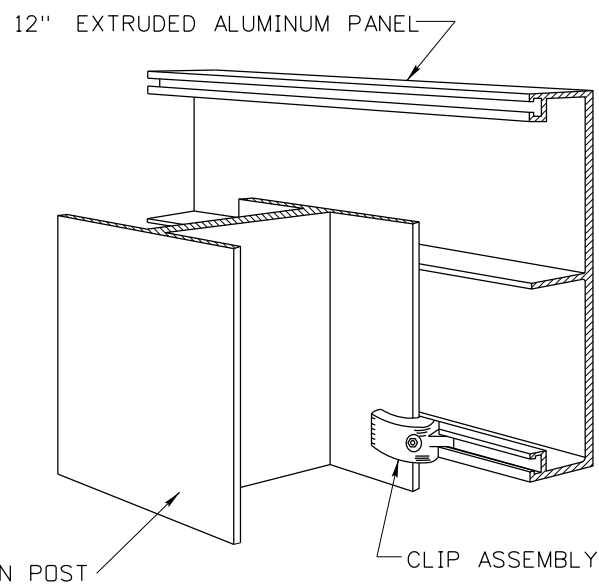
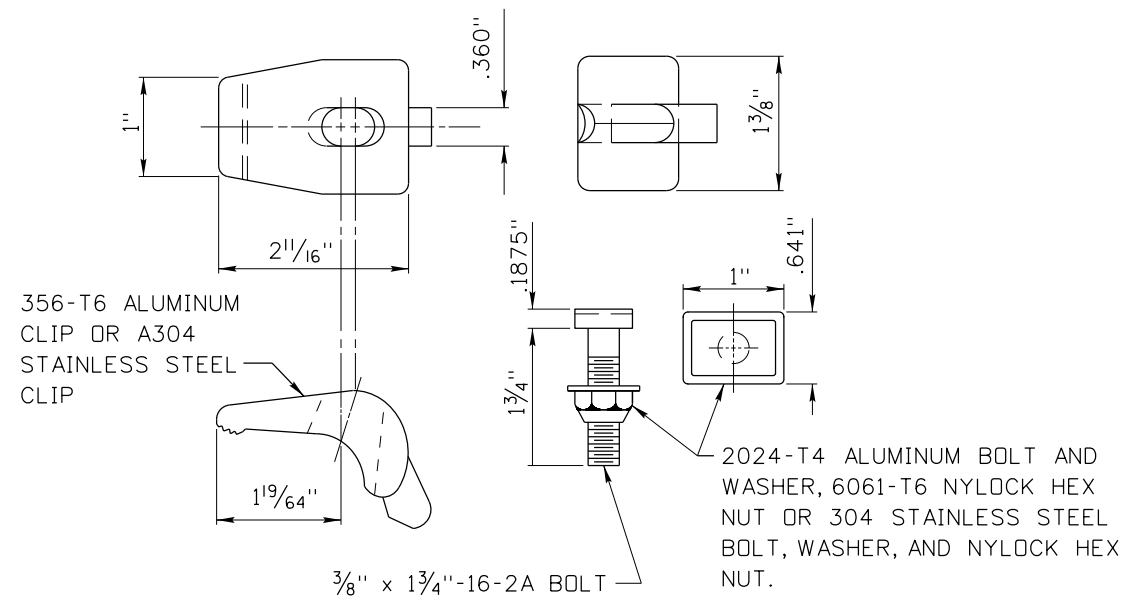


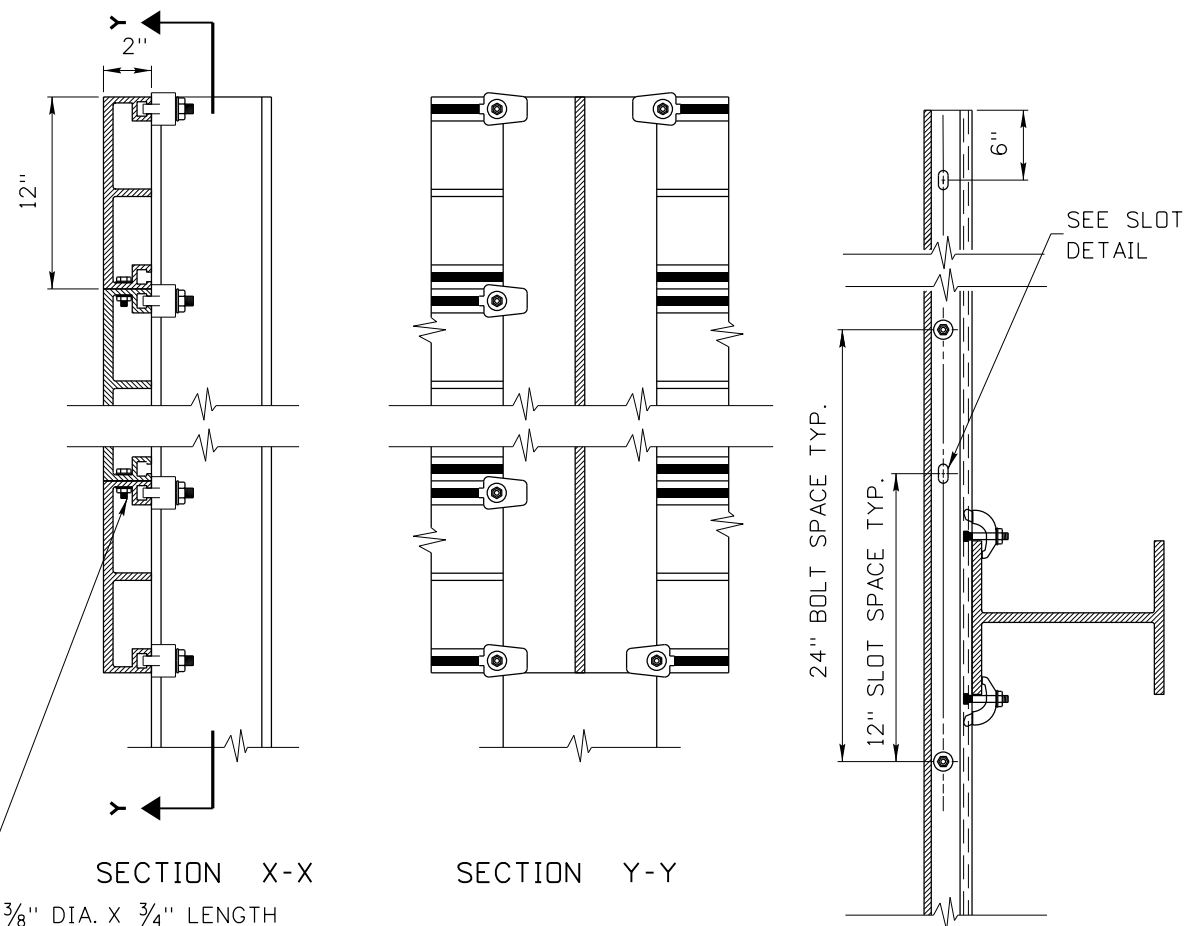
EXTRUDED ALUMINUM SIGN



TYPICAL CLIP INSTALLATION



POST CLIPS AND POST CLIP BOLT DETAIL



SECTION X-X

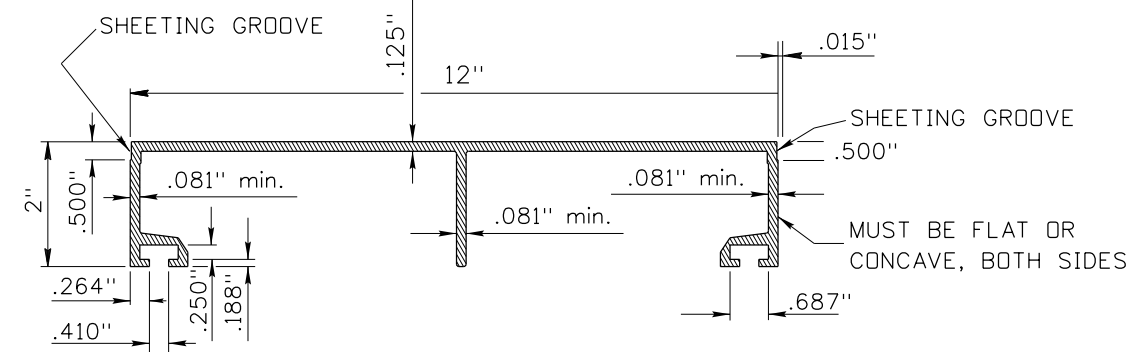
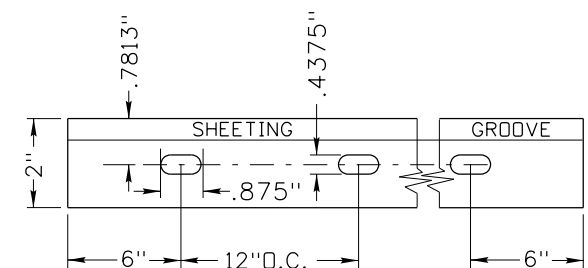
SECTION Y-Y

SECTION Z-Z

3/8" DIA. X 3/4" LENGTH
2024-T4 ALUMINUM BOLT AND TWO FLAT WASHERS, ONE 7075-T6 LOCK WASHER, AND A 6061-T6 HEX NUT OR 304 STAINLESS STEEL BOLT, WASHER, AND NYLOCK HEX NUT.

Sign Height	No. of 12" Panels	No. of Clip Assem.
2'-0"	2	10
3'-0"	3	12
4'-0"	4	14
5'-0"	5	16
6'-0"	6	18
7'-0"	7	20
8'-0"	8	22
9'-0"	9	24
10'-0"	10	26
11'-0"	11	28
12'-0"	12	30
13'-0"	13	32
14'-0"	14	34
15'-0"	15	36
16'-0"	16	38
17'-0"	17	40

SLOT HOLE DETAIL



12" EXTRUDED PANEL CROSS SECTION

NOTES:

1. ASSEMBLE EXTRUDED ALUMINUM SIGN PANELS STARTING WITH THE TOP PANEL. CENTER THE PANEL ON THE SIGN POSTS. ENSURE PANELS ARE HORIZONTAL AND ATTACHED TO THE POSTS WITH POST CLIPS AND POST CLIP BOLTS. STAGGER THE POST CLIPS AND BOLTS ON BOTH SIDES OF EACH POST AS SHOWN. ENSURE THAT ADJOINING PANELS ARE FLUSH BEFORE TIGHTENING PANEL BOLTS.
2. TORQUE NYLOCK NUTS ON THE POST CLIP BOLTS TO 225 INCH POUNDS WITH DRY CLEAN UNLUBRICATED THREADS.
3. WHEN MODIFYING AN EXISTING SIGN AND ADDITIONAL POST CLIPS ARE TO BE INSTALLED TO THE INSIDE OF THE SIGN POST, THE CONTRACTOR IS PERMITTED TO FIELD DRILL FOR A POST CLIP INSERTION HOLE IN EXISTING EXTRUSIONS.
4. THE CLIP ASSEMBLY IS TO BE ALL ALUMINUM OR ALL STAINLESS STEEL.

REVISIONS								
NO.	DATE	BY	NO.	DATE	BY	NO.	DATE	BY
1	12-94	HEB	6	07-12	HEB			
2	08-96	HEB	7	12-13	SCH			
3	12-01	HEB	8	11-14	SCH			
4	05-12	HEB	6	06-17	HEB			
5	06-12	SCH						

SCALES SHOWN ARE FOR 11" X 17" PRINTS ONLY
CADD FILE NAME: 616-2_0617.dgn
DRAWING DATE: DECEMBER, 1993

IDAHO TRANSPORTATION DEPARTMENT



BOISE IDAHO

ORIGINAL SIGNED BY: KEVIN SABLAN
DESIGN/TRAFFIC SERVICES ENGINEER

STANDARD DRAWING

EXTRUDED ALUMINUM SIGNS

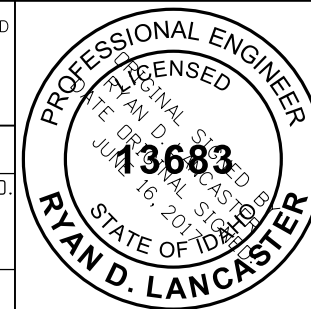
English

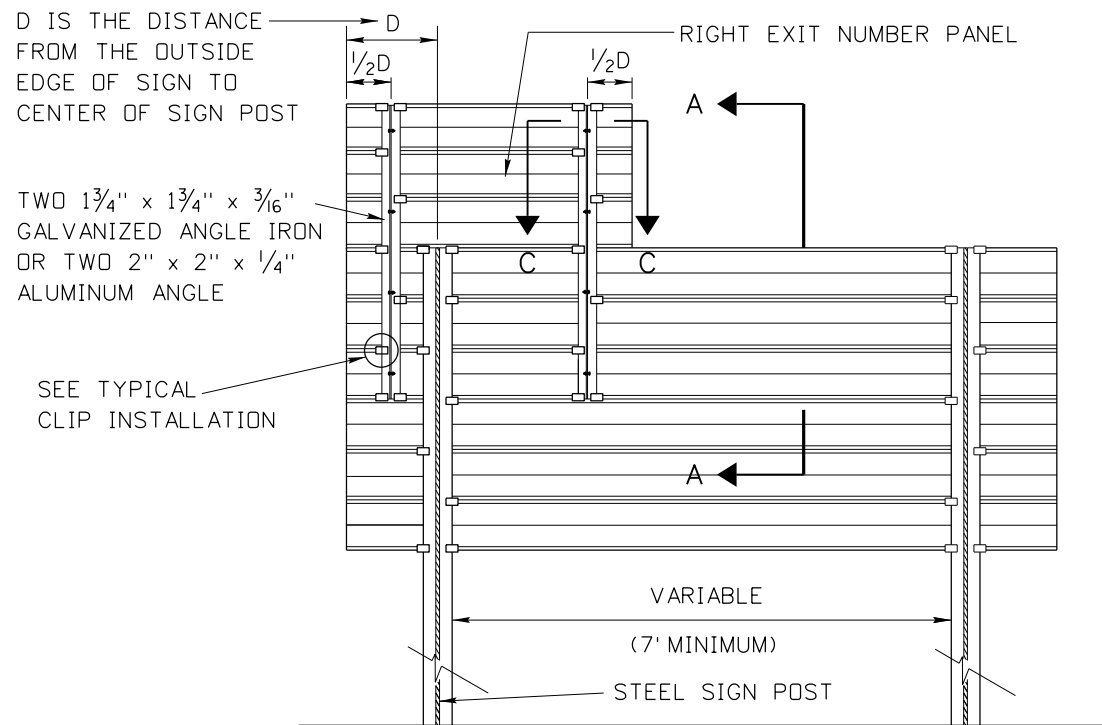
STANDARD DRAWING NO.

616-2

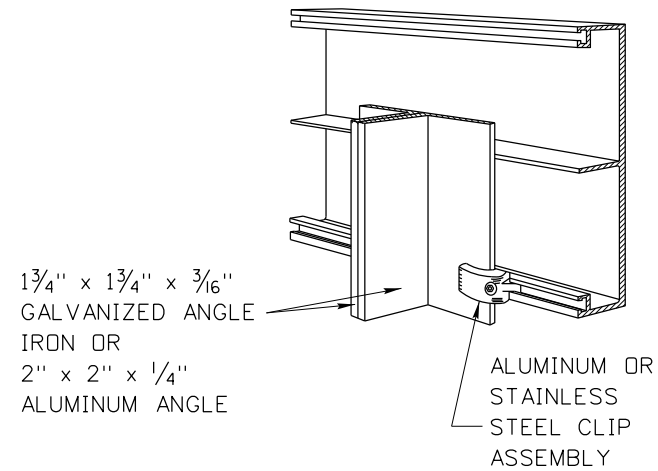
SHEET 1 OF 2

ORIGINAL STORED AT: ITD, Headquarters 3311 West State Boise, Idaho





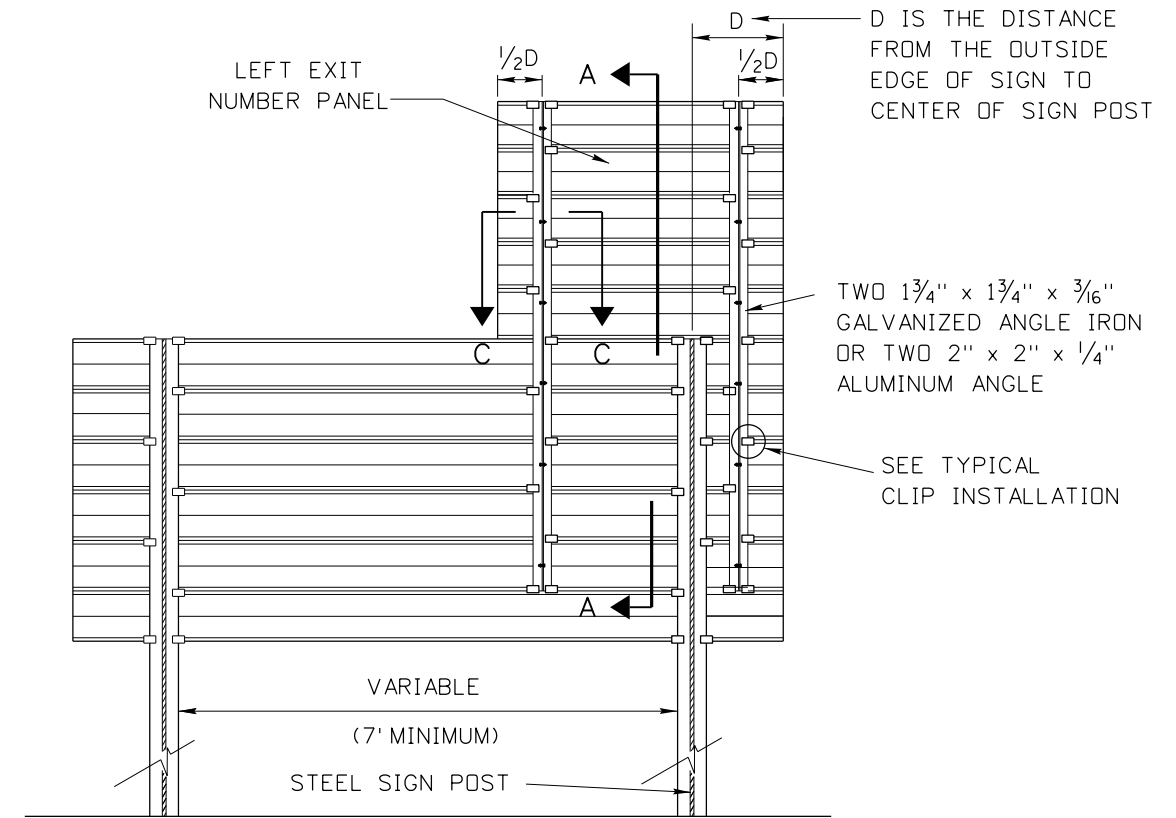
RIGHT EXIT PANEL



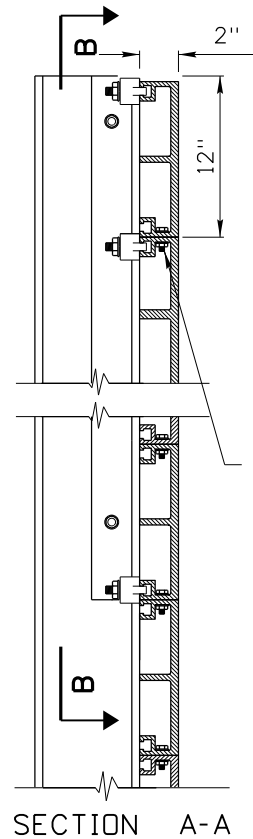
TYPICAL CLIP INSTALLATION

NOTES:

5. 1 3/4" x 1 3/4" x 3/16" ANGLE IRON WEIGHS 2.12 LBS/FT. WEIGHT OF ANGLE IRON DOES NOT INCLUDE GALVANIZING.
6. 2" x 2" x 1/4" ALUMINUM ANGLE WEIGHS 1.11 LBS/FT.
7. DRAWING NOT TO SCALE

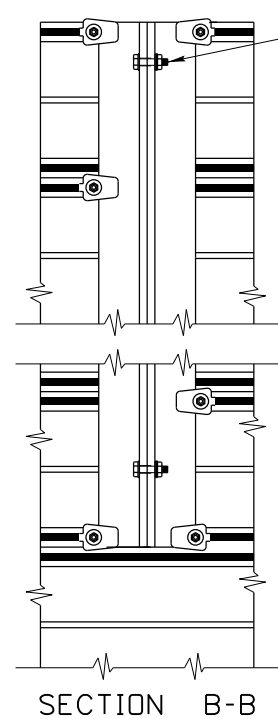


LEFT EXIT PANEL

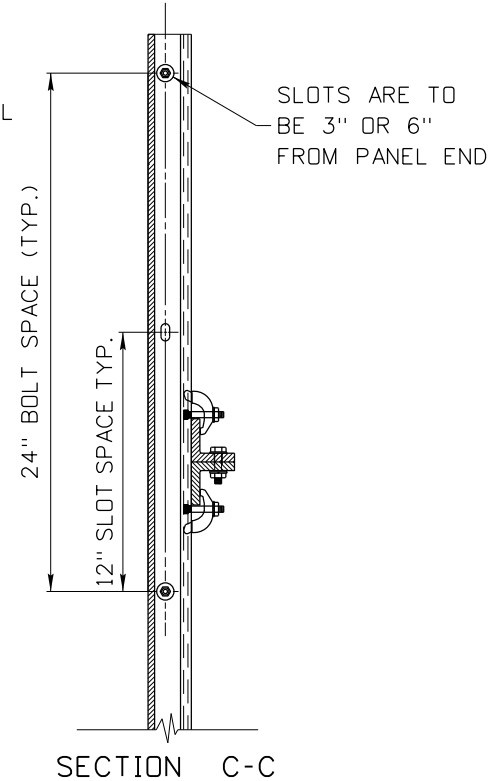


SECTION A-A

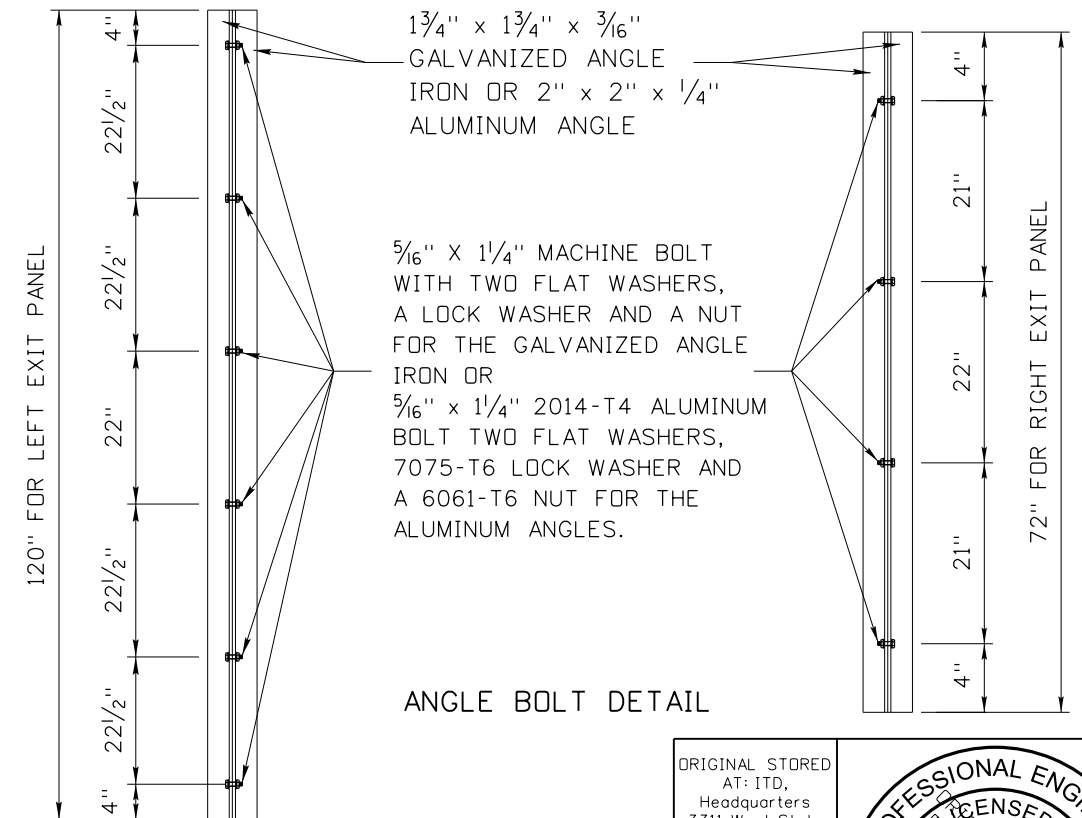
3/8" DIA. X 3/4" LENGTH 2024-T4 ALUMINUM BOLT AND TWO FLAT WASHERS, ONE 7075-T6 LOCK WASHER, AND A 6061-T6 HEX NUT OR 304 STAINLESS STEEL BOLT, WASHER, AND NYLOCK HEX NUT.



SECTION B-B



SECTION C-C



ANGLE BOLT DETAIL

REVISIONS								
NO.	DATE	BY	NO.	DATE	BY	NO.	DATE	BY
1	12-01	NQB	6	06-17	HEB			
2	01-04	HEB						
3	12-07	HEB						
4	07-12	HEB						
5	11-14	HEB						

SCALES SHOWN ARE FOR 11" X 17" PRINTS ONLY
 CADD FILE NAME: 616-2_0617.dgn
 DRAWING DATE: DECEMBER, 1993

IDAHO TRANSPORTATION DEPARTMENT

BOISE IDAHO

ORIGINAL SIGNED BY: KEVIN SABLAN
 DESIGN/TRAFFIC SERVICES ENGINEER

STANDARD DRAWING
EXTRUDED ALUMINUM SIGNS

ORIGINAL STORED AT: ITD, Headquarters 3311 West State Boise, Idaho

English
 STANDARD DRAWING NO.
616-2
 SHEET 2 OF 2