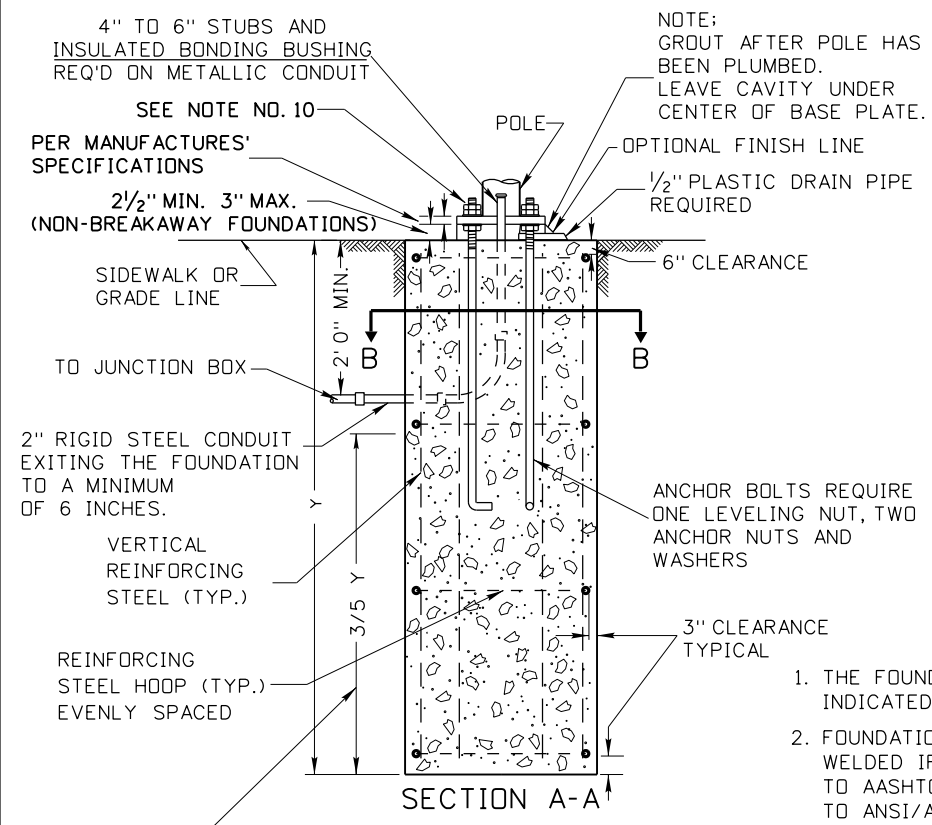
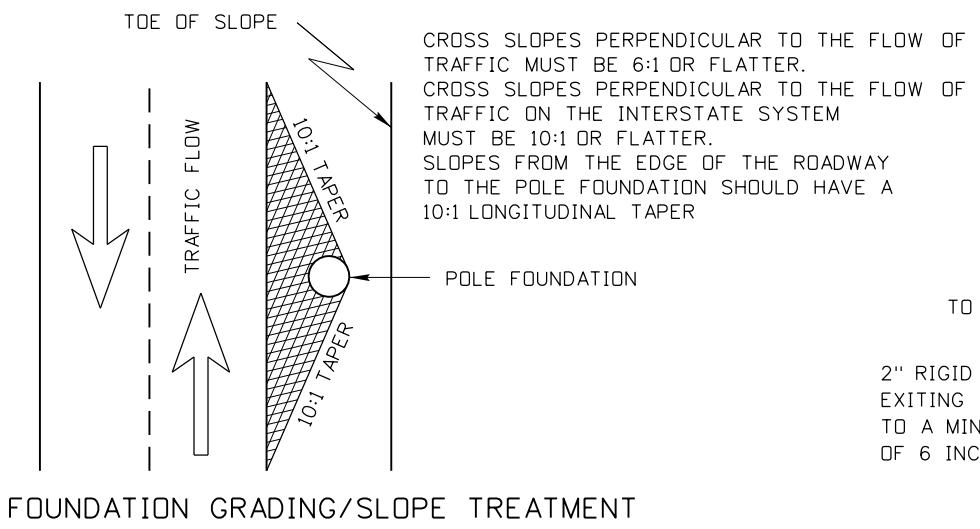


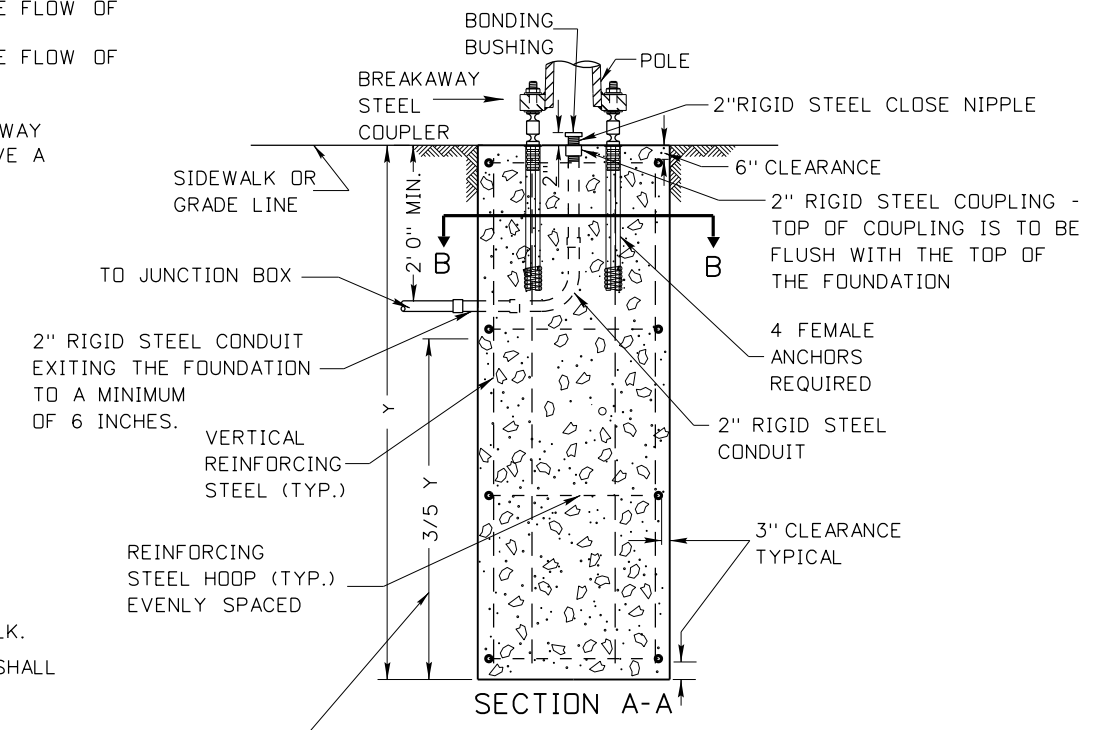
BREAKAWAY SUPPORT CLEARANCE DIAGRAMS



TYPICAL POLE FOUNDATION IN DRILLED HOLE ANCHOR BASE



FOUNDATION GRADING/SLOPE TREATMENT



TYPICAL POLE FOUNDATION IN DRILLED HOLE BREAKAWAY BASE

GENERAL NOTES:

1. THE FOUNDATIONS SHALL BE LOCATED AS INDICATED ON THE PROJECT PLAN SHEETS.
2. FOUNDATION REINFORCING STEEL CAGES MAY BE WELDED IF THE REINFORCING STEEL CONFORMS TO AASHTO M 31 AND ALL WELDING CONFORMS TO ANSI/AWS D1.4 (STRUCTURAL WELDING CODE - REINFORCING STEEL).
3. REINFORCING STEEL IN POLE FOUNDATIONS SHALL BE 60 KSI STEEL.
4. STEEL TEMPLATE REQUIRED FOR ANCHOR BOLT PLACEMENT.
5. CLASS 40A CONCRETE SHALL BE USED IN POLE FOUNDATIONS.
6. FOUNDATION CONCRETE SHALL ACHIEVE 100% STRENGTH AND CURE FOR A MINIMUM OF 7 DAYS BEFORE ANY LOADING IS APPLIED.
7. FILLER JOINT MATERIAL WILL BE PLACED AROUND POLE FOUNDATION WHEN POLE FOUNDATION IS IN CONTACT WITH SIDEWALK.
8. ELEVATION OF TOP OF POLE FOUNDATION SHALL MATCH THE ADJACENT PAVEMENT EDGE OR SIDEWALK ELEVATION.
9. ANCHOR BASE ASSEMBLIES SHALL BE INSTALLED AND TIGHTENED IN ACCORDANCE WITH SUBSECTION 619.03 OF THE ITD STANDARD SPECIFICATIONS FOR HIGHWAY CONSTRUCTION AND THE SUPPLEMENTAL SPECIFICATIONS.
10. DRAWING NOT TO SCALE.

THE LOWER 3/5 OF THE FOUNDATION TO BE PLACED AGAINST UNDISTURBED SOIL UNLESS OTHERWISE APPROVED BY THE ENGINEER. THE UPPER 2/5 OF THE FOUNDATION MAY BE FORMED AS NEEDED.

THE LOWER 3/5 OF THE FOUNDATION TO BE PLACED AGAINST UNDISTURBED SOIL UNLESS OTHERWISE APPROVED BY THE ENGINEER. THE UPPER 2/5 OF THE FOUNDATION MAY BE FORMED AS NEEDED.

POLE FOUNDATION SCHEDULE												
POLE TYPE	MOUNTING HEIGHT	MASTARM LENGTH	FOUNDATION TYPE	X	Y	REINFORCING STEEL HOOPS			VERTICAL REINFORCING STEEL			CUBIC YARDS CONCRETE
						QTY.	SIZE	LIN.FT.	QTY.	SIZE	LIN.FT.	
LIGHT POLE	30'	ALL	A	2'-0"	5'-0"	4	*4	20'-10"	6	*4	25'-6"	0.6
LIGHT POLE	35'	ALL	B	2'-6"	7'-0"	4	*4	27'-2"	6	*6	37'-6"	1.3
LIGHT POLE	40'-50'	ALL	C	3'-0"	8'-0"	5	*4	41'-10"	8	*6	58'-0"	2.1

ORIGINAL STORED AT: ITD, Headquarters 3311 West State Boise, Idaho

REVISIONS							
NO.	DATE	BY	NO.	DATE	BY	NO.	DATE

SCALES SHOWN ARE FOR 11" X 17" PRINTS ONLY

CADD FILE NAME: 619-1\_0517.dgn

DRAWING DATE: MAY, 2017

**IDAHO TRANSPORTATION DEPARTMENT**

BOISE IDAHO

ORIGINAL SIGNED BY: KEVIN SABLAN  
DESIGN/TRAFFIC SERVICES ENGINEER

STANDARD DRAWING

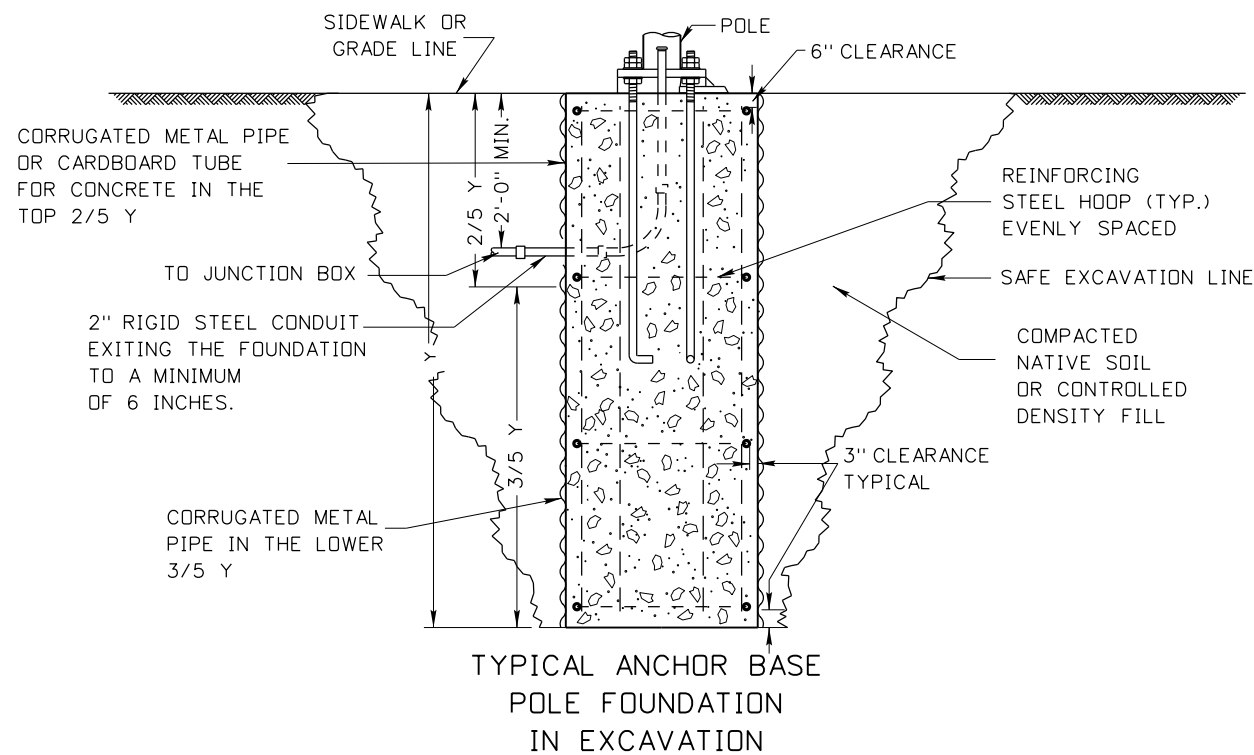
**LIGHT POLE FOUNDATION DETAILS**

**English**

STANDARD DRAWING NO. 619-1

SHEET 1 OF 2

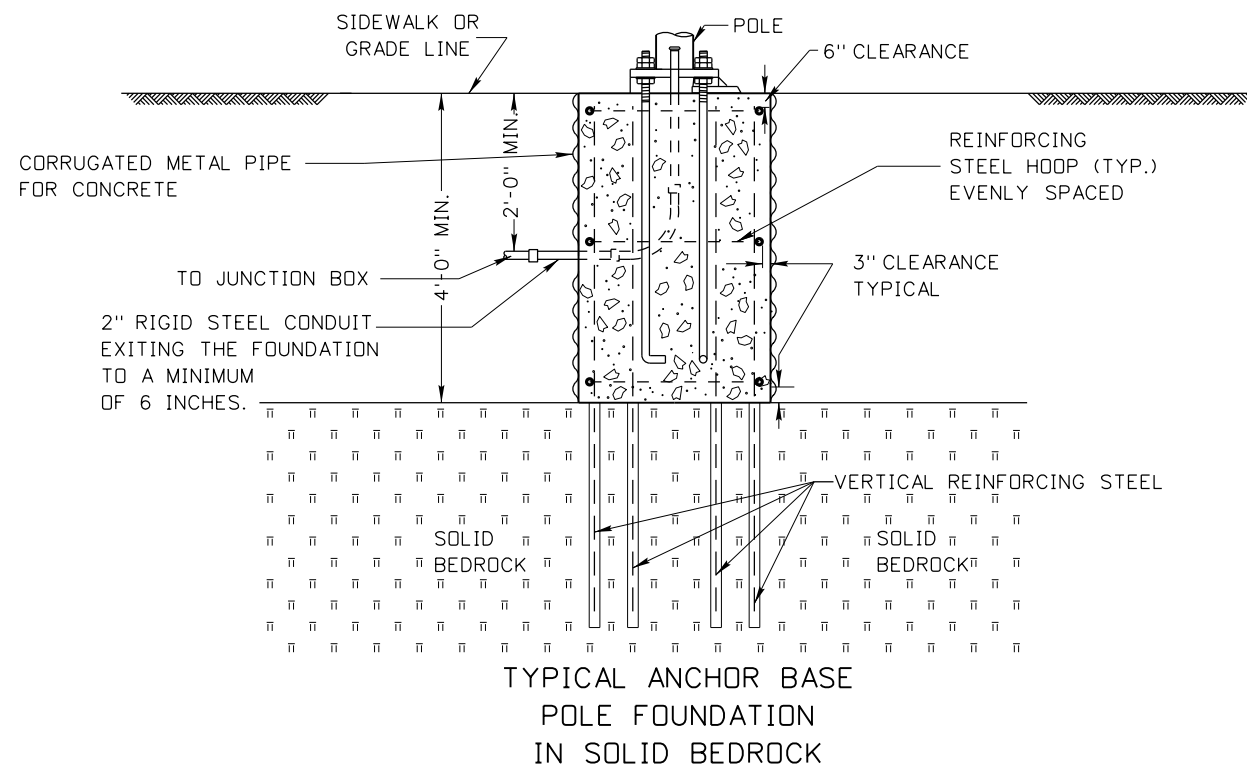
REGISTERED PROFESSIONAL ENGINEER  
STATE OF IDAHO  
4115  
MAY 11, 2017 SIGNED



TYPICAL ANCHOR BASE  
POLE FOUNDATION  
IN EXCAVATION

EXCAVATION NOTES:

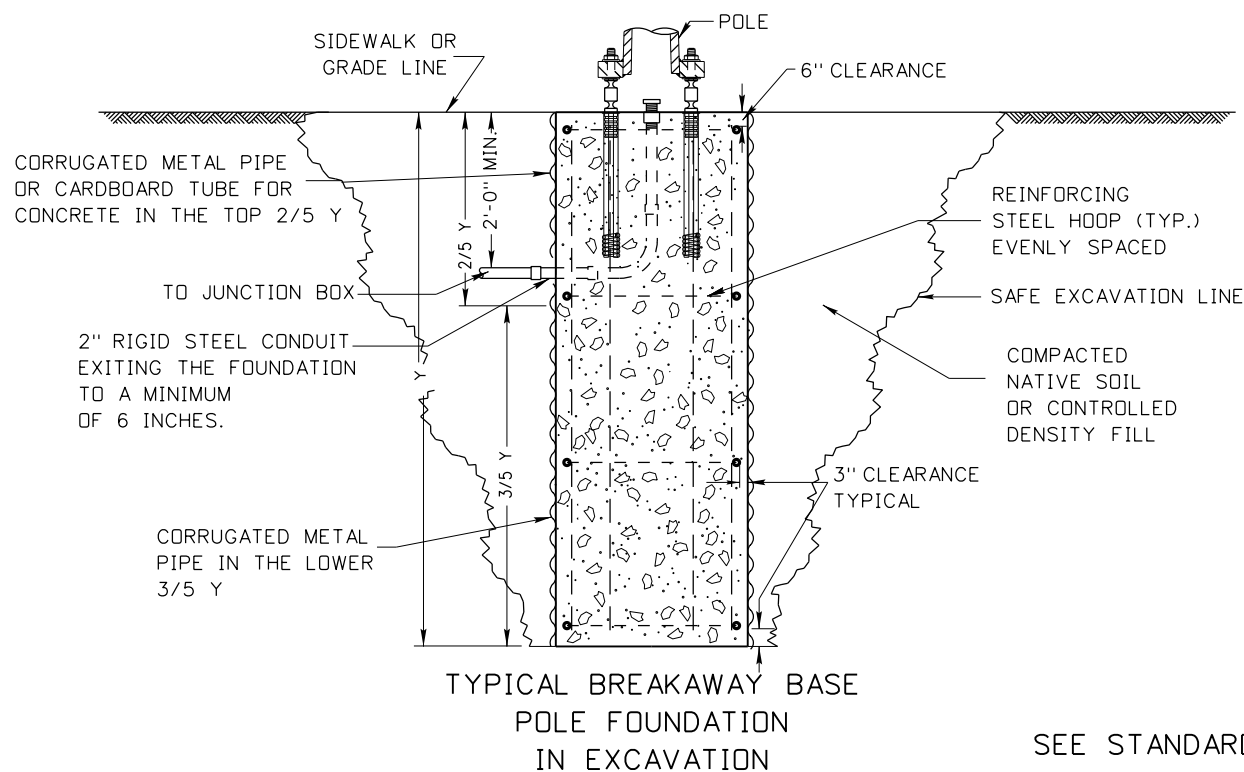
1. IF CORRUGATED METAL PIPE IS USED UP TO SIDEWALK OR GRADE LINE, CUT OUT HOLE FOR THE CONDUITS WILL BE EQUAL TO THE DIAMETER OF CONDUIT OR CONDUIT PLUS ONE INCH.
2. WHEN NATIVE SOIL IS USED FOR BACKFILL, IT SHALL BE COMPACTED IN ACCORDANCE WITH SUBSECTION 210.03 OF THE IDAHO STANDARD SPECIFICATIONS FOR HIGHWAY CONSTRUCTION AND SUPPLEMENTAL SPECIFICATIONS.
3. IF CONTROL DENSITY FILL IS USED FOR BACK FILL, IT SHALL HAVE A COMPRESSIVE STRENGTH OF 100 PSI TO 300 PSI.
4. DRAWING NOT TO SCALE.



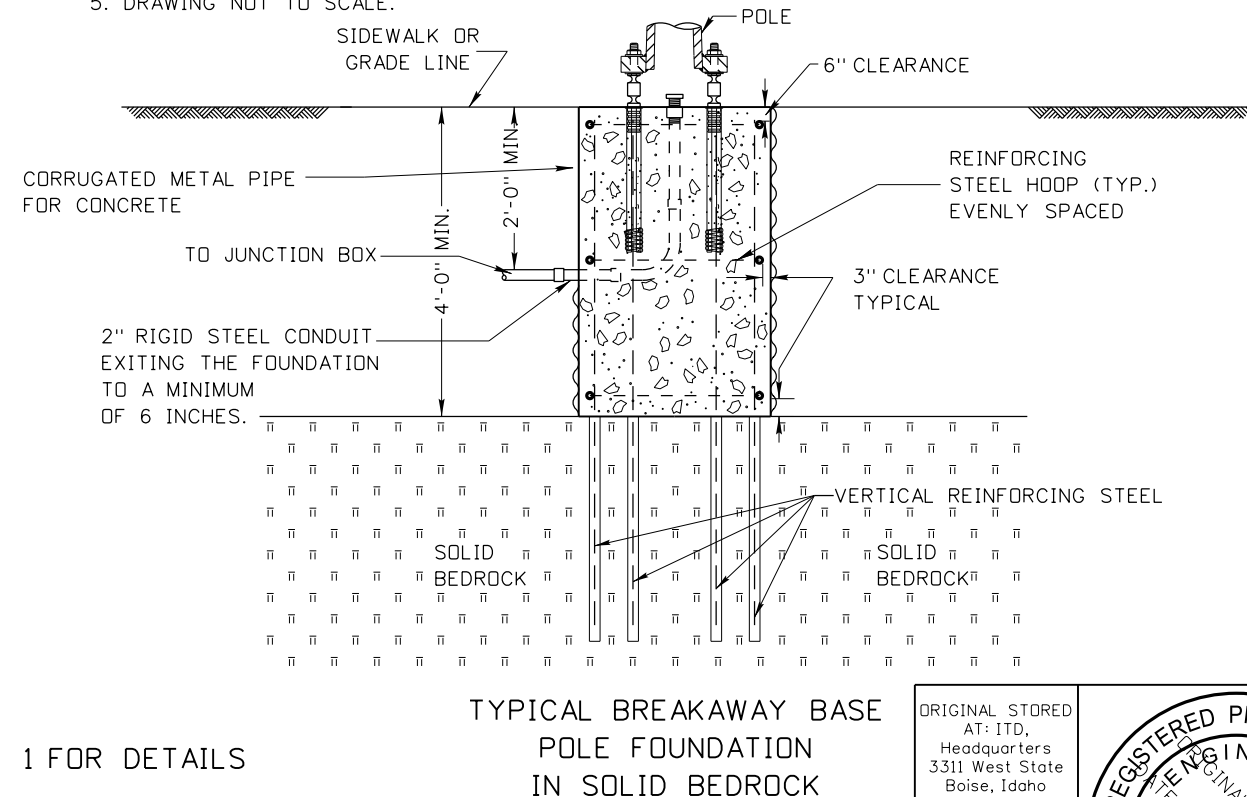
TYPICAL ANCHOR BASE  
POLE FOUNDATION  
IN SOLID BEDROCK

SOLID BEDROCK NOTES:

1. IF DEPTH TO BEDROCK IS LESS THAN 4', NOTIFY THE ENGINEER AND REDESIGN OF THE FOUNDATION MAY BE REQUIRED
2. THREE REINFORCING STEEL HOOPS TO BE EVENLY SPACED ARE REQUIRED.
3. SOCKET ALL VERTICAL REINFORCING STEEL FULL LENGTH AS SHOWN IN POLE FOUNDATION SCHEDULE ON SHEET 1 IN BEDROCK. DIAMETERS OF DRILLED HOLES FOR VERTICAL REINFORCING STEEL SHALL BE AT LEAST 2 INCHES. FILL DRILLED HOLES WITH GROUT, 705.02, TYPE B, CLASS 1.
4. EXCAVATION NOTES APPLY TO THIS APPLICATION.
5. DRAWING NOT TO SCALE.



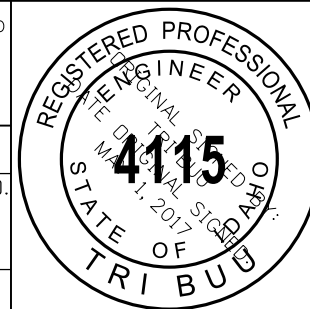
TYPICAL BREAKAWAY BASE  
POLE FOUNDATION  
IN EXCAVATION



TYPICAL BREAKAWAY BASE  
POLE FOUNDATION  
IN SOLID BEDROCK

SEE STANDARD DRAWING 619-1 SHEET 1 FOR DETAILS

ORIGINAL STORED  
AT: ITD,  
Headquarters  
3311 West State  
Boise, Idaho



REVISIONS							
NO.	DATE	BY	NO.	DATE	BY	NO.	DATE

SCALES SHOWN  
ARE FOR 11" X 17"  
PRINTS ONLY

CADD FILE NAME:  
619-1\_0517.dgn

DRAWING DATE:  
MAY, 2017

**IDAHO  
TRANSPORTATION  
DEPARTMENT**



BOISE IDAHO

ORIGINAL SIGNED BY: KEVIN SABLAN  
DESIGN/TRAFFIC SERVICES ENGINEER

STANDARD DRAWING

**LIGHT POLE  
FOUNDATION DETAILS**

**English**

STANDARD DRAWING NO.  
**619-1**

SHEET 2 OF 2