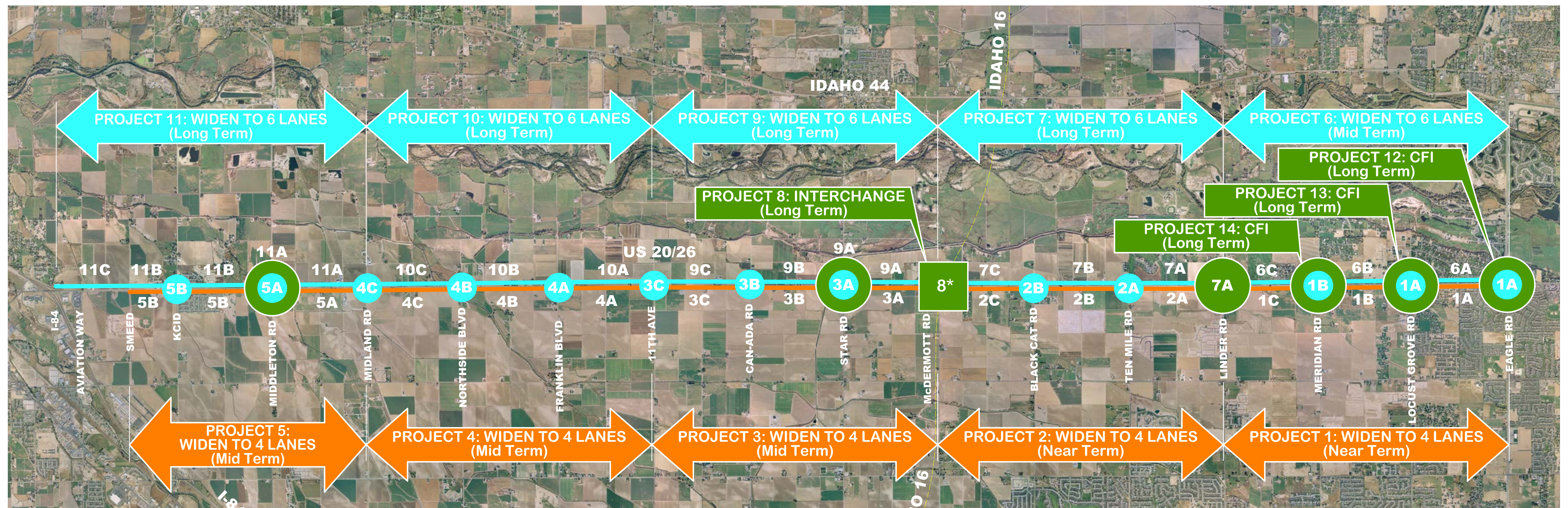


# Preliminary Project Phasing



**ANTICIPATED CONSTRUCTION TIME FRAMES**

Near Term: 2016 - 2024  
 Mid Term: 2025 - 2032  
 Long Term: 2033 - 2040

- Standard Signalized Intersection Improvement
- Continuous Flow Intersection Improvement Phase
- Segment Widening to 4 Lanes
- Interchange Improvement Phase
- Segment Widening to 6 Lanes

\* Project to be programmed and completed with the Idaho 16 Corridor Project

\*\* Construction time frames depend on funding availability, change in traffic demands, and /or safety conditions