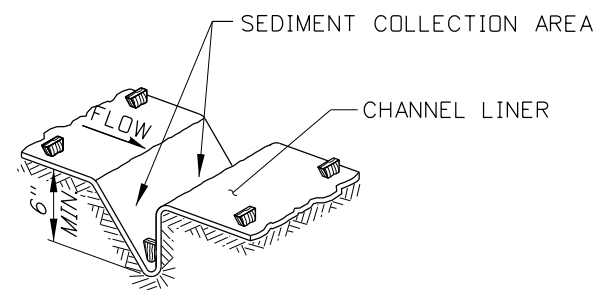
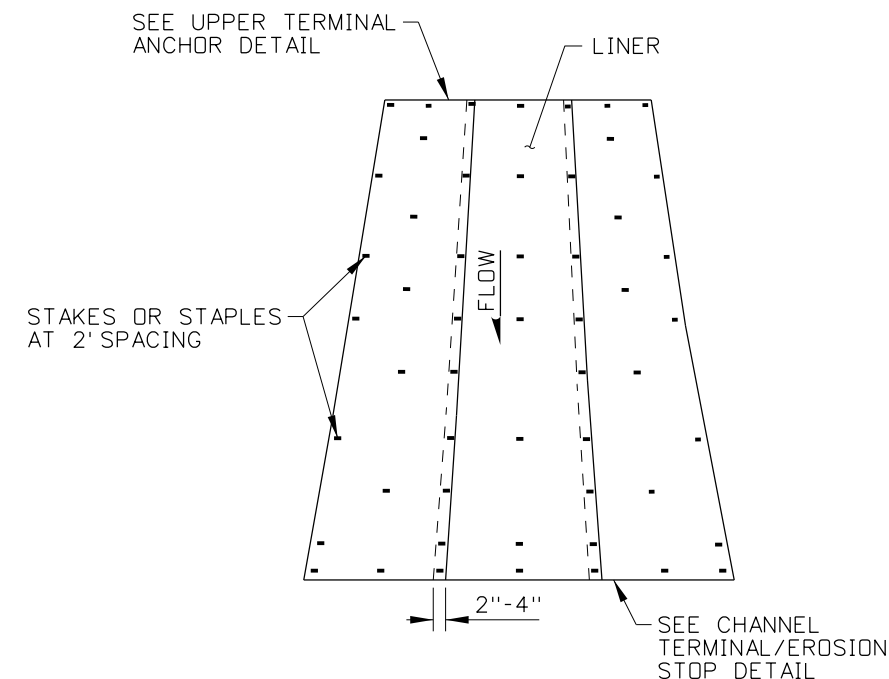


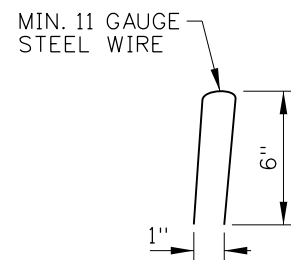
CHANNEL & INTERSECTION EXAMPLE
(SEE NOTE NO. 2)



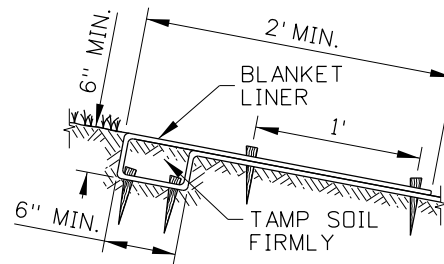
CHANNEL CHECK SLOT DETAIL



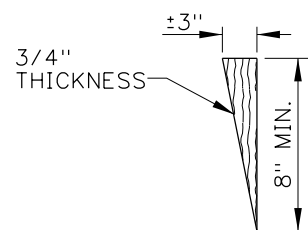
SLOPE INSTALLATION EXAMPLE
(SEE NOTE NO. 2)



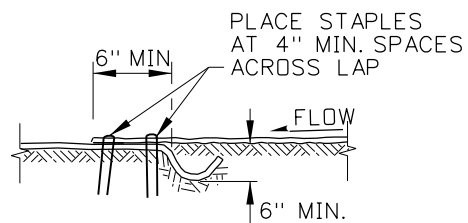
WIRE STAPLE DETAIL
(SEE NOTE NO. 4)



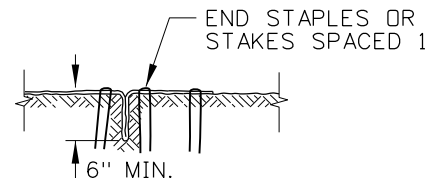
UPPER TERMINAL ANCHOR DETAIL



WOOD STAKE DETAIL



OVERLAP DETAIL

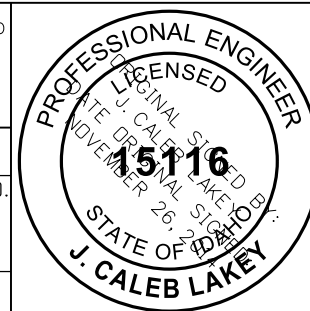


CHANNEL TERMINAL/EROSION STOP DETAIL

NOTES

1. SEE THE GENERAL NOTES FOR PERMANENT EROSION CONTROL STANDARD DRAWINGS ON 212-10.
2. THE LOCATION, SPACING, AND CONFIGURATION OF THE SLOPE AND CHANNEL PROTECTION MAY VARY FOR EACH INSTALLATION ACCORDING TO THE MANUFACTURER'S RECOMMENDATIONS.
3. BEGIN LINER PLACEMENT AT THE UPSTREAM END OR CREST OF THE SLOPE.
4. INSTALL WIRE STAPLES PERPENDICULAR TO THE SLOPE PLANE.
5. NOT TO SCALE.

ORIGINAL STORED AT: ITD, Headquarters 3311 West State Boise, Idaho



REVISIONS							
NO.	DATE	BY	NO.	DATE	BY	NO.	DATE
1	05-95	MSM					
2	02-96	MSM					
3	10-10	KEH					
4	11-13	RDL					
5	11-14	RDL					

SCALES SHOWN ARE FOR 11" X 17" PRINTS ONLY
CADD FILE NAME: 212-12_1114.dgn
DRAWING DATE: DECEMBER, 1994

IDAHO TRANSPORTATION DEPARTMENT

BOISE IDAHO

ORIGINAL SIGNED BY: RYAN D. LANCASTER
STANDARDS ENGINEER

STANDARD DRAWING
PERMANENT EROSION AND SEDIMENT CONTROL
SLOPE AND CHANNEL PROTECTION
REQUIRES STD. DWG. 212-10

English
STANDARD DRAWING NO.
212-12
SHEET 1 OF 1