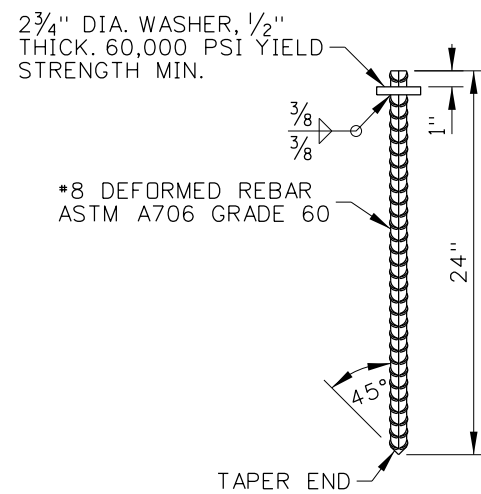
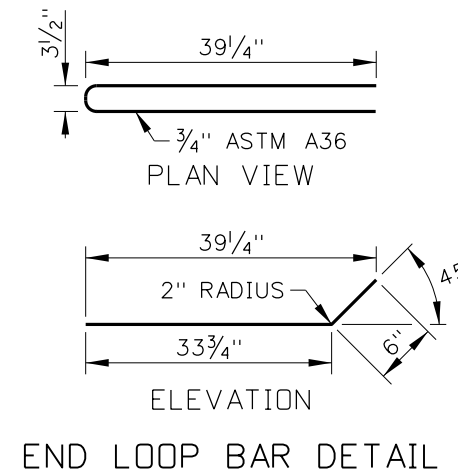


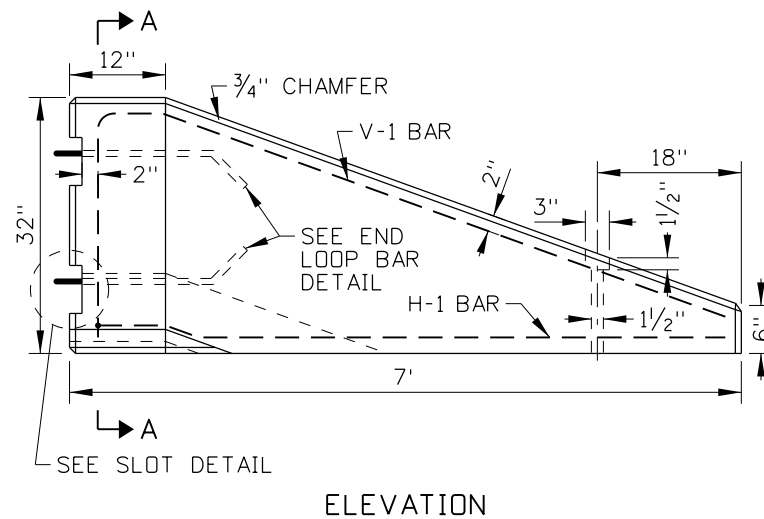
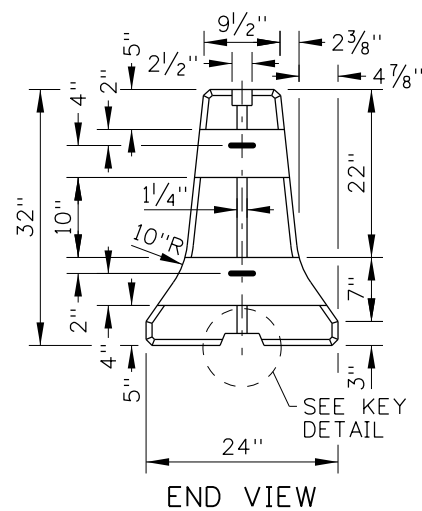
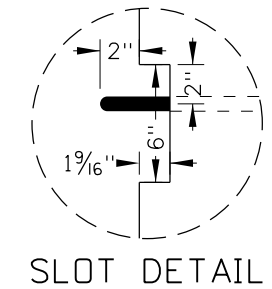
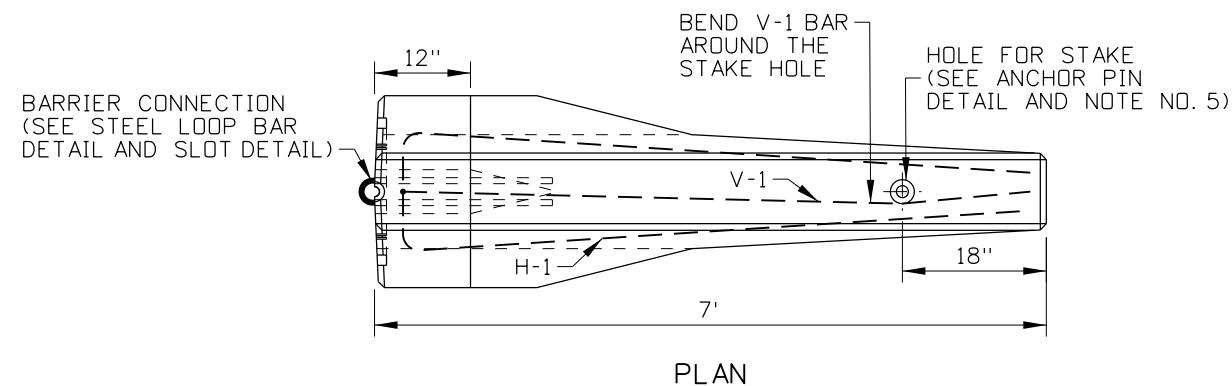
CONNECTING PIN DETAIL



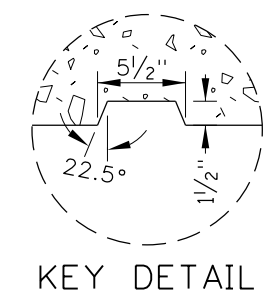
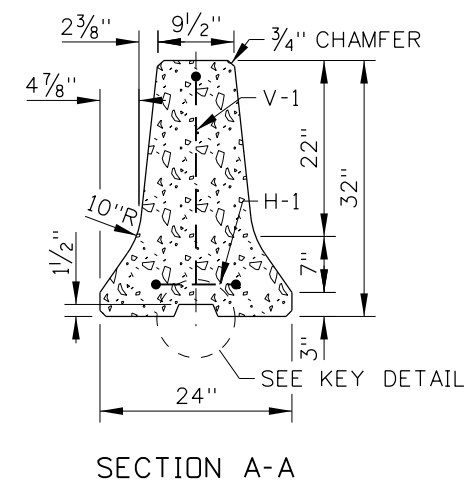
ANCHOR PIN DETAIL



TERMINAL TYPE A REINFORCING STEEL TABLE				
MARK	LOCATION	BAR SIZE	NUMBER OF BARS	SKETCH
H-1	HORIZONTAL BAR.	NO. 5	1	<p>6'-2" 10" 14'-6" TOTAL BAR LENGTH</p>
V-1	VERTICAL BAR.	NO. 5	1	<p>8" 28" 6'-3" 9'-2" TOTAL BAR LENGTH</p>



TERMINAL TYPE A



ORIGINAL STORED AT: ITD, Headquarters 3311 West State Boise, Idaho

REVISIONS							
NO.	DATE	BY	NO.	DATE	BY	NO.	DATE
1	01-86	GB	6	12-92	MSM	11	09-10
2	08-86	GB	7	09-93	MSM	12	11-14
3	06-87	GB	8	02-96	MSM	13	03-19
4	04-89	GB	9	01-00	MSM		
5	01-91	GB	10	12-04	MSM		

SCALES SHOWN ARE FOR 11" X 17" PRINTS ONLY
CADD FILE NAME: 612-20_0419.dgn
DRAWING DATE: NOVEMBER, 1974

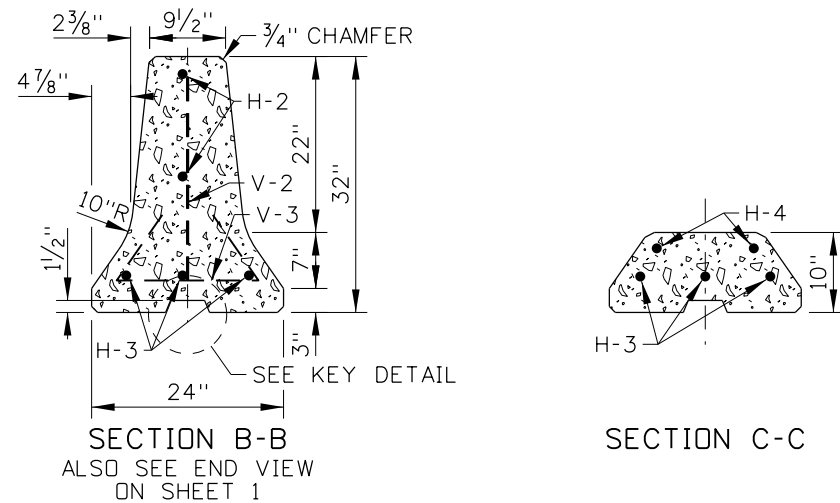
IDAHO TRANSPORTATION DEPARTMENT
BOISE IDAHO

ORIGINAL SIGNED BY: KEVIN SABLAN
DESIGN/TRAFFIC SERVICES ENGINEER

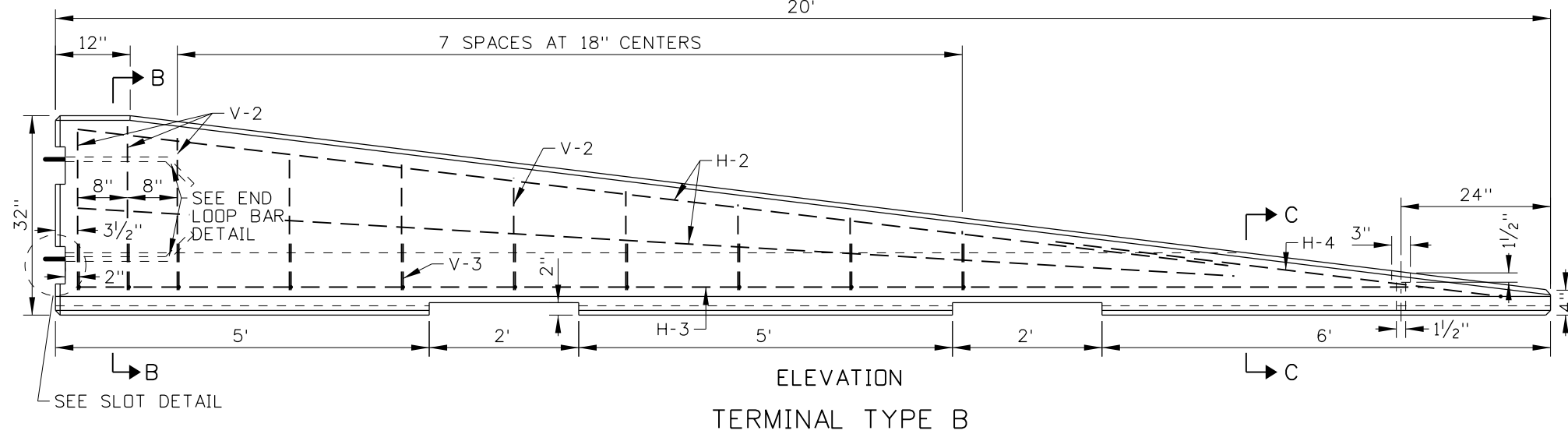
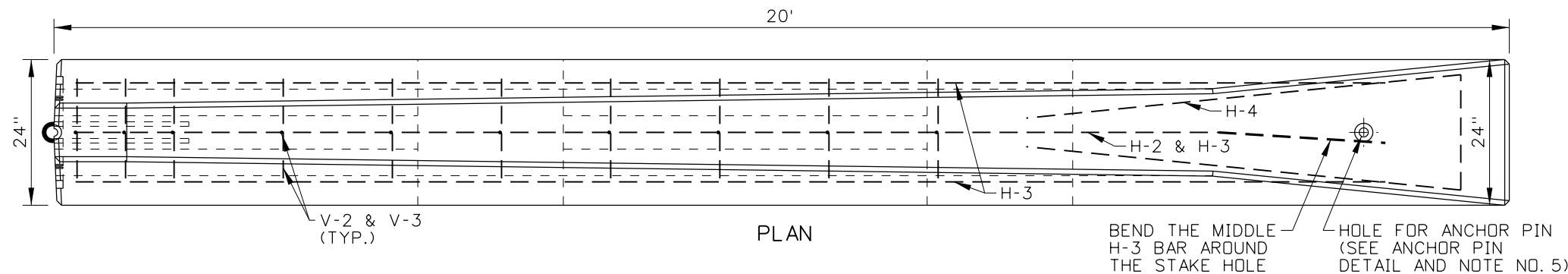
STANDARD DRAWING
PRECAST CONCRETE BARRIER TERMINALS

English
STANDARD DRAWING NO. 612-20
SHEET 1 OF 2

PROFESSIONAL ENGINEER
LICENSED
13683
RYAN D. LANCASTER
STATE OF IDAHO



TERMINAL TYPE B REINFORCING STEEL TABLE																								
MARK	LOCATION	BAR SIZE	NUMBER OF BARS	SKETCH																				
H-2	HORIZONTAL BAR. TIED TO V-1 BARS.	NO. 5	2	15'-6"																				
H-3	HORIZONTAL BAR. TIED TO V2 BARS.	NO. 5	3	18'																				
H-4	HORIZONTAL BAR. AT END OF BARRIER ALONG TOP SLOPE.	NO. 5	1	6'-0" (sketch), 13'-10" TOTAL BAR LENGTH (text)																				
V-2	VERTICAL BAR.	NO. 5	10	<table border="1"> <thead> <tr> <th>L (IN.)</th> <th>QTY.</th> </tr> </thead> <tbody> <tr><td>26</td><td>2</td></tr> <tr><td>25</td><td>1</td></tr> <tr><td>23</td><td>1</td></tr> <tr><td>21</td><td>1</td></tr> <tr><td>18</td><td>1</td></tr> <tr><td>16</td><td>1</td></tr> <tr><td>14</td><td>1</td></tr> <tr><td>12</td><td>1</td></tr> <tr><td>10</td><td>1</td></tr> </tbody> </table>	L (IN.)	QTY.	26	2	25	1	23	1	21	1	18	1	16	1	14	1	12	1	10	1
L (IN.)	QTY.																							
26	2																							
25	1																							
23	1																							
21	1																							
18	1																							
16	1																							
14	1																							
12	1																							
10	1																							
V-3	VERTICAL BAR. TIE TO V-1 AND H-2 BARS.	NO. 5	10	3'-2" TOTAL BAR LENGTH (sketch), 18" (sketch)																				



NOTES

1. THE TYPE A TERMINAL MAY BE USED ON THE TRAILING END OF PRECAST CONCRETE BARRIER IF THE TERMINAL IS OUTSIDE OF THE CLEAR-ZONE OF TRAVEL LANES IN THE OPPOSING DIRECTION.
2. THE TYPE B TERMINAL MAY BE USED WITHIN THE CLEAR-ZONE WHEN TRAFFIC SPEEDS ARE 40 MPH OR LESS AND THE AVAILABLE SPACE IS LIMITED BY RIGHT-OF-WAY CONSTRAINTS OR THE OTHER ROADSIDE FEATURES THAT PRECLUDE USING A GUARDRAIL TERMINAL OR CRASH CUSHION.
3. PRECAST TYPE A TERMINAL WITH CLASS 30AF CONCRETE. PRECAST TYPE B TERMINAL WITH CLASS 50AF CONCRETE. CHAMFER TOP, BOTTOM, AND ENDS 3/4". PROVIDE 2" MINIMUM CONCRETE COVER OVER REINFORCING STEEL.
4. PIN CONNECT THE TERMINALS TO CONCRETE BARRIERS.
5. ANCHOR PIN THE TERMINALS AT THE TAPERED END. ENSURE THE ANCHOR PIN DOES NOT PROTRUDE BEYOND THE EXTERIOR OF THE TERMINAL SURFACE.
6. DRAWING NOT TO SCALE.

REVISIONS								
NO.	DATE	BY	NO.	DATE	BY	NO.	DATE	BY
1	01-86	GB	6	12-92	MSM	11	09-10	PLR
2	08-86	GB	7	09-93	MSM	12	11-14	RDL
3	06-87	GB	8	02-96	MSM	13	03-19	RDL
4	04-89	GB	9	01-00	MSM			
5	01-91	GB	10	12-04	MSM			

SCALES SHOWN ARE FOR 11" X 17" PRINTS ONLY
 CADD FILE NAME: 612-20_0419.dgn
 DRAWING DATE: NOVEMBER, 1974

IDAHO TRANSPORTATION DEPARTMENT

BOISE IDAHO

ORIGINAL SIGNED BY: KEVIN SABLAN
 DESIGN/TRAFFIC SERVICES ENGINEER

STANDARD DRAWING
PRECAST CONCRETE BARRIER TERMINALS

ORIGINAL STORED AT: ITD, Headquarters 3311 West State Boise, Idaho

English

STANDARD DRAWING NO. **612-20**

SHEET 2 OF 2