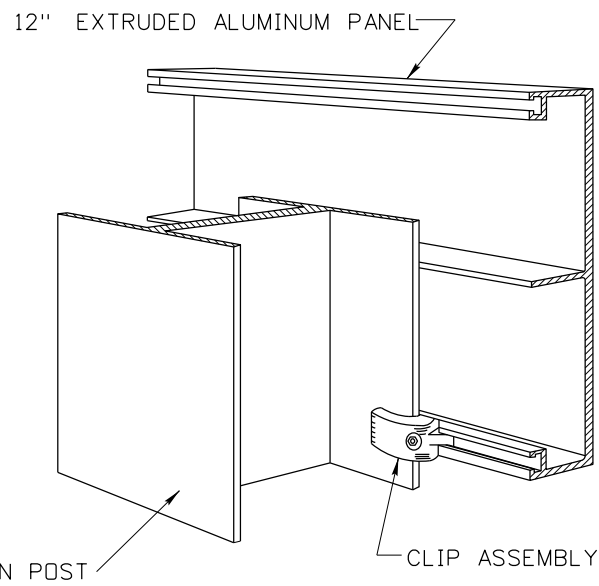
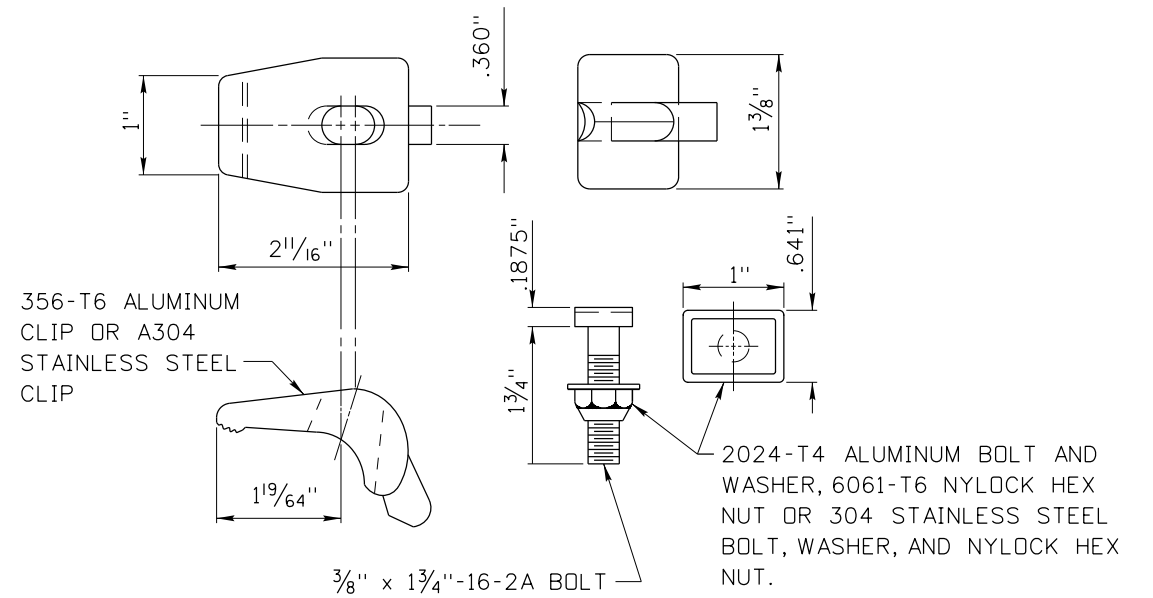


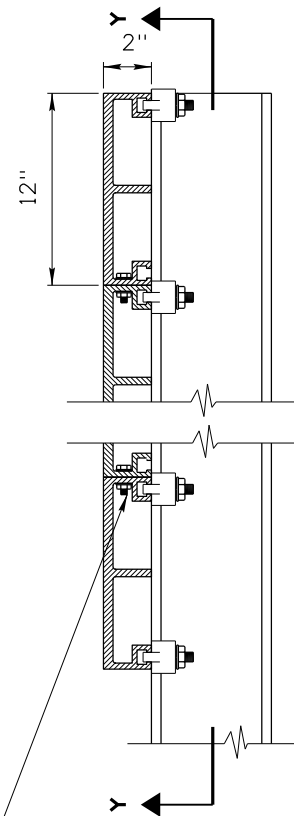
EXTRUDED ALUMINUM SIGN



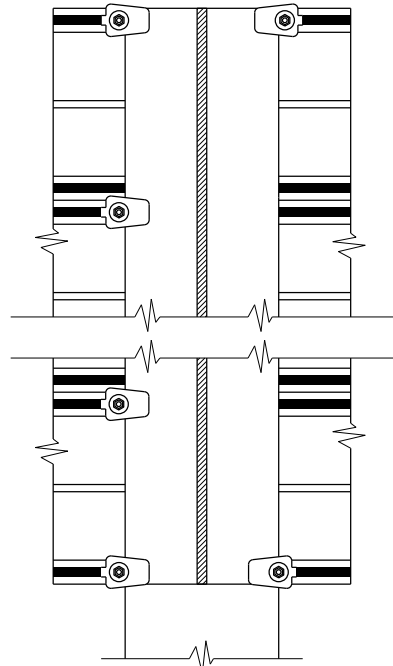
TYPICAL CLIP INSTALLATION



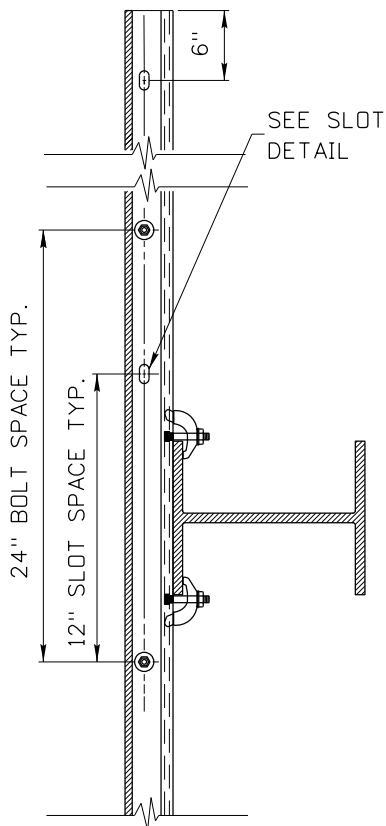
POST CLIPS AND POST CLIP BOLT DETAIL



SECTION X-X



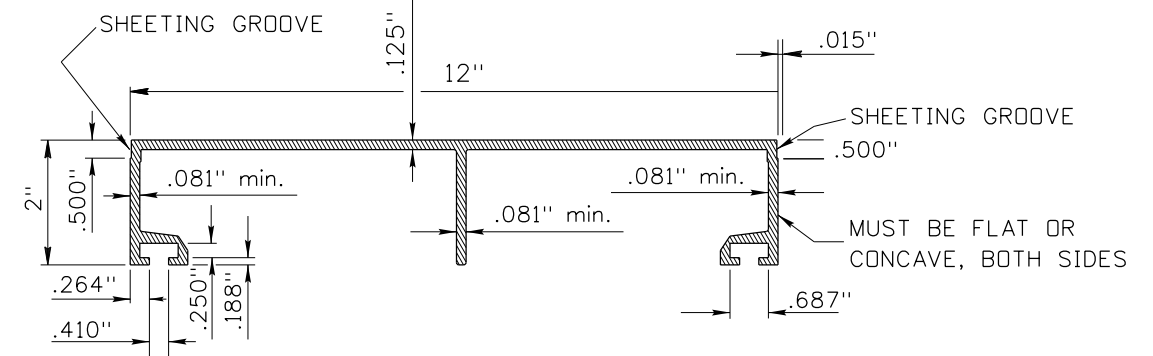
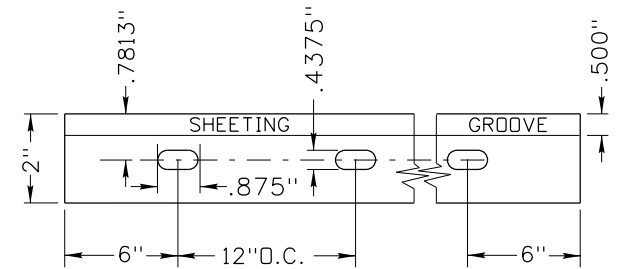
SECTION Y-Y



SECTION Z-Z

Sign Height	No. of 12" Panels	No. of Clip Assem.
2'-0"	2	10
3'-0"	3	12
4'-0"	4	14
5'-0"	5	16
6'-0"	6	18
7'-0"	7	20
8'-0"	8	22
9'-0"	9	24
10'-0"	10	26
11'-0"	11	28
12'-0"	12	30
13'-0"	13	32
14'-0"	14	34
15'-0"	15	36
16'-0"	16	38
17'-0"	17	40

SLOT HOLE DETAIL



12" EXTRUDED PANEL CROSS SECTION

NOTES:

1. ASSEMBLE EXTRUDED ALUMINUM SIGN PANELS STARTING WITH THE TOP PANEL. CENTER THE PANEL ON THE SIGN POSTS. ENSURE PANELS ARE HORIZONTAL AND ATTACHED TO THE POSTS WITH POST CLIPS AND POST CLIP BOLTS. STAGGER THE POST CLIPS AND BOLTS ON BOTH SIDES OF EACH POST AS SHOWN. ENSURE THAT ADJOINING PANELS ARE FLUSH BEFORE TIGHTENING PANEL BOLTS.
2. TORQUE NYLOCK NUTS ON THE POST CLIP BOLTS TO 225 INCH POUNDS WITH DRY CLEAN UNLUBRICATED THREADS.
3. WHEN MODIFYING AN EXISTING SIGN AND ADDITIONAL POST CLIPS ARE TO BE INSTALLED TO THE INSIDE OF THE SIGN POST, THE CONTRACTOR IS PERMITTED TO FIELD DRILL FOR A POST CLIP INSERTION HOLE IN EXISTING EXTRUSIONS.
4. THE CLIP ASSEMBLY IS TO BE ALL ALUMINUM OR ALL STAINLESS STEEL.
5. DRAWING NOT TO SCALE.

ORIGINAL STORED AT: ITD, Headquarters 3311 West State Boise, Idaho

ORIGINAL SIGNED BY: RYAN D. LANCASTER DATE ORIGINAL SIGNED: NOVEMBER 25, 2014

REVISIONS								
NO.	DATE	BY	NO.	DATE	BY	NO.	DATE	BY
1	12-94	HEB	6	07-12	HEB			
2	08-96	HEB	7	12-13	SCH			
3	12-01	HEB	8	11-14	SCH			
4	05-12	HEB						
5	06-12	SCH						

SCALES SHOWN ARE FOR 11" X 17" PRINTS ONLY
 CADD FILE NAME: i10a1114.dgn
 DRAWING DATE: DECEMBER, 1993

IDAHO TRANSPORTATION DEPARTMENT



BOISE IDAHO

ORIGINAL SIGNED BY: CARL D. MAIN for STANDARDS ENGINEER

STANDARD DRAWING
EXTRUDED ALUMINUM SIGNS

English
 STANDARD DRAWING NO.
I-10-A
 SHEET 1 OF 1