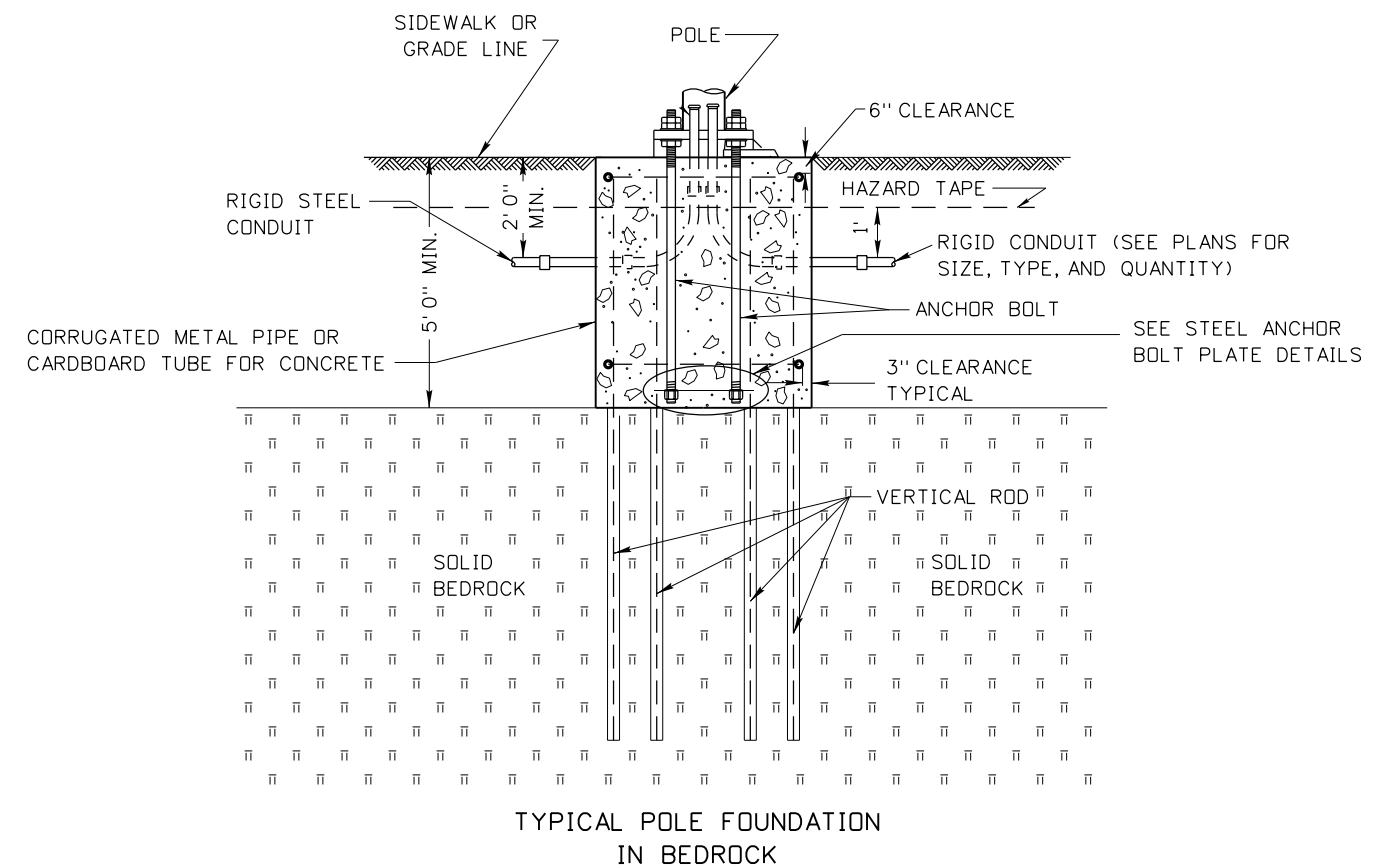


TYPICAL POLE FOUNDATION
IN EXCAVATION

EXCAVATION NOTES:

1. IF CORRUGATED METAL PIPE IS USED UP TO SIDEWALK OR GRADE LINE, CUT OUT HOLE FOR THE CONDUITS WILL BE EQUAL TO THE DIAMETER OF CONDUIT OR CONDUITS PLUS ONE INCH.
2. WHEN NATIVE SOIL IS USED FOR BACKFILL, IT SHALL BE COMPACTED IN ACCORDANCE WITH SUBSECTION 210.03 OF THE IDAHO STANDARD SPECIFICATIONS FOR HIGHWAY CONSTRUCTION AND SUPPLEMENTAL SPECIFICATIONS.
3. IF CONTROL DENSITY FILL IS USED FOR BACK FILL, IT SHALL HAVE A COMPRESSIVE STRENGTH OF 100 PSI TO 300 PSI.
4. DRAWING NOT TO SCALE.

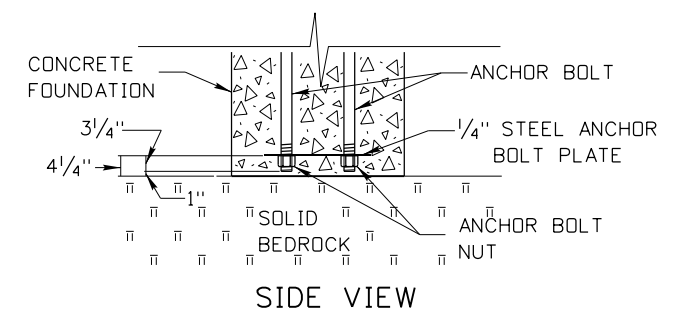
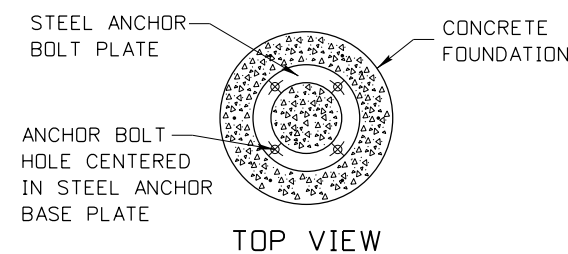


TYPICAL POLE FOUNDATION
IN BEDROCK

SOLID BEDROCK NOTES:

1. IF DEPTH TO BEDROCK IS LESS THAN 5', NOTIFY THE ENGINEER AND REDESIGN OF THE FOUNDATION MAY BE REQUIRED.
2. SOCKET ALL VERTICAL RODS FULL LENGTH AS SHOWN ON STANDARD DRAWING I-7-C-1 IN BEDROCK. DIAMETERS OF DRILLED HOLES FOR VERTICAL RODS SHALL BE AT LEAST 2 INCHES. FILL DRILLED HOLES WITH GROUT, 705.02, TYPE B, CLASS 1.
3. EXCAVATION NOTES APPLY TO THIS APPLICATION.
4. DRAWING NOT TO SCALE.

STEEL ANCHOR BOLT PLATE DETAILS



ANCHOR BOLT PLATE SCHEDULE		
BOLT CIRCLE	OUTSIDE DIAMETER	INSIDE DIAMETER
17 1/2"	21 1/4"	13 3/4"
18 1/2"	22 1/4"	14 3/4"
22"	26 1/4"	17 3/4"

SEE STANDARD DRAWING I-7-C-1 FOR DETAILS

NOT TO SCALE

ORIGINAL STORED
AT: ITD,
Headquarters
3311 West State
Boise, Idaho

ORIGINAL SIGNED BY:
TRI BUJ
DATE ORIGINAL SIGNED:
NOVEMBER 25, 2014

REVISIONS								
NO.	DATE	BY	NO.	DATE	BY	NO.	DATE	BY
1	11-14	HEB						

SCALES SHOWN
ARE FOR 11" X 17"
PRINTS ONLY

CADD FILE NAME:
i7c21114.dgn

DRAWING DATE:
APRIL, 2014

**IDAHO
TRANSPORTATION
DEPARTMENT**



BOISE IDAHO

ORIGINAL SIGNED BY: RYAN D. LANCASTER
STANDARDS ENGINEER

STANDARD DRAWING
**MAST ARM SIGNAL POLE,
LIGHTING POLE AND PEDESTRIAN
POLE FOUNDATION DETAILS**
REQUIRES STD. DWG. I-7-C-1

English

STANDARD DRAWING NO.
I-7-C-2

SHEET 1 OF 1