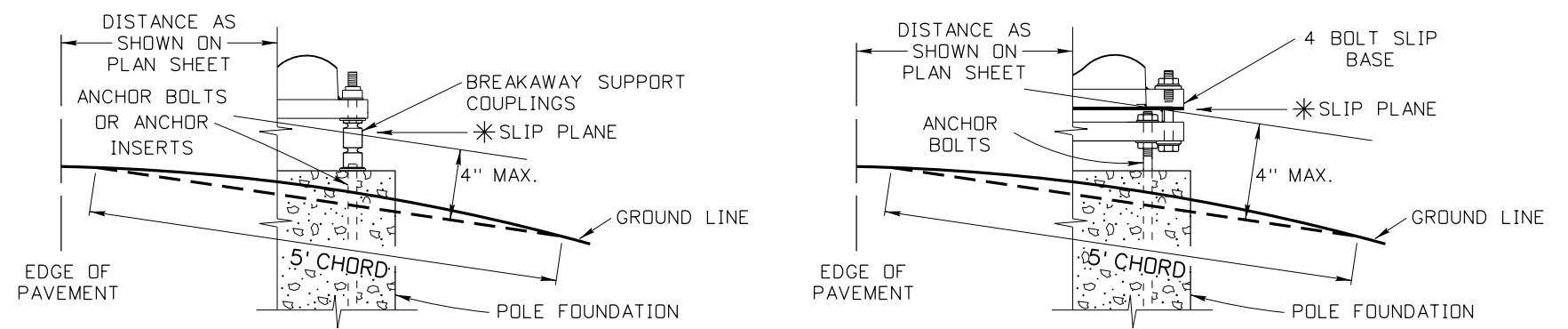
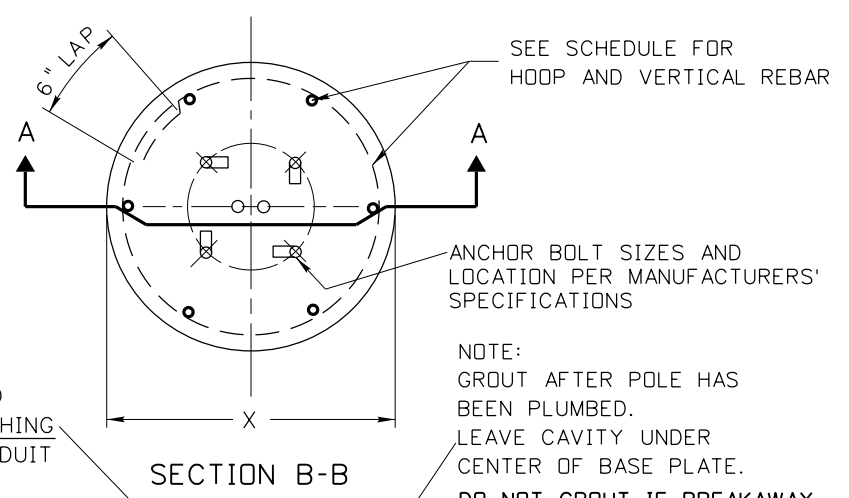
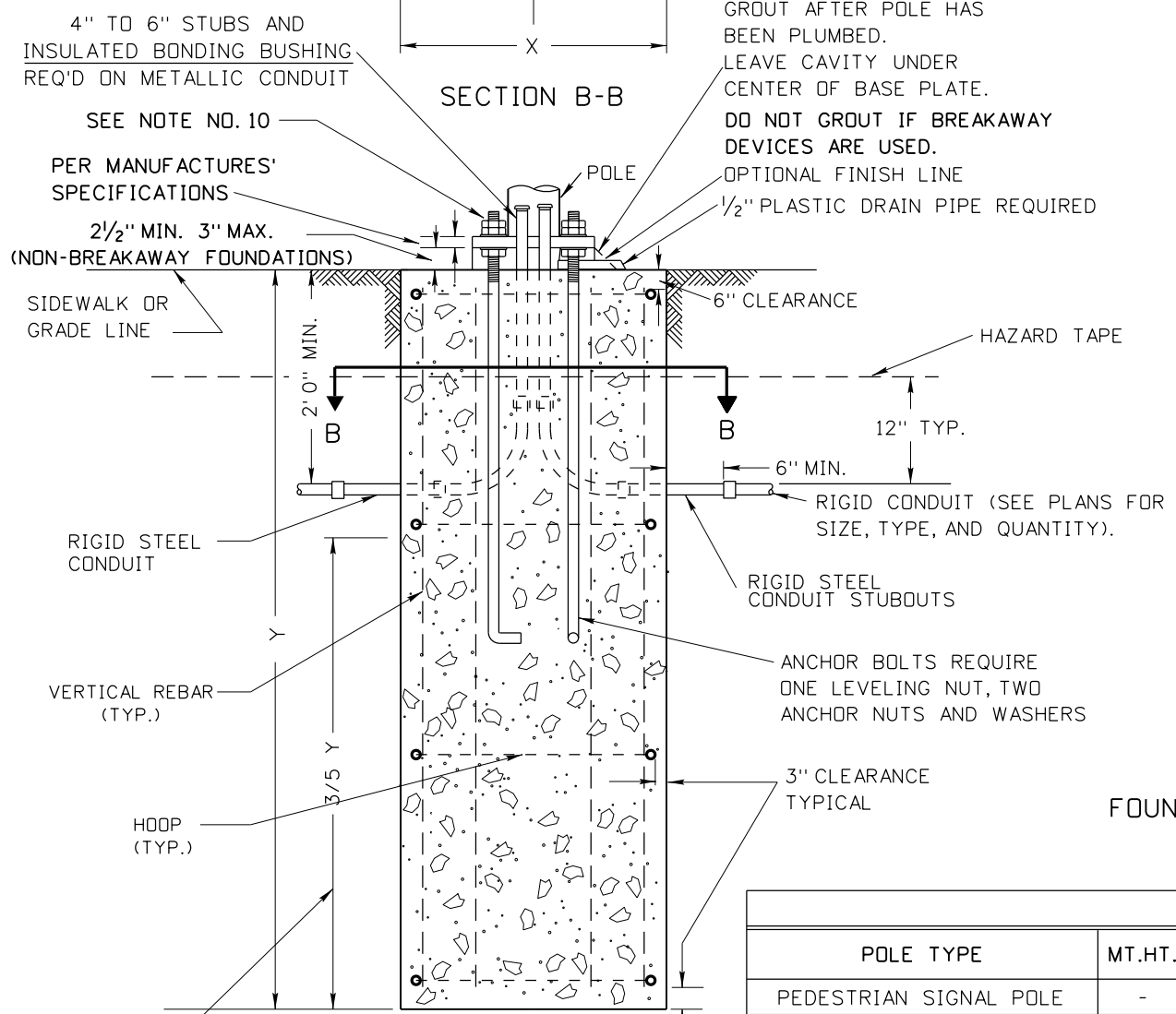


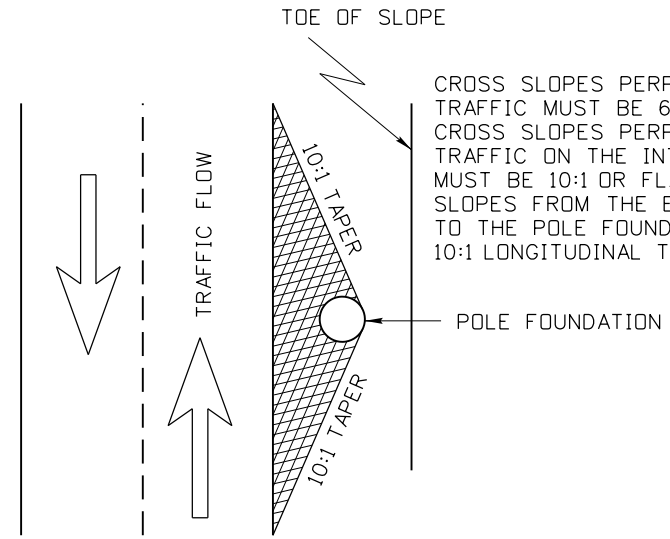
\* THE SLIP PLANE OF A BREAK AWAY POLE FOUNDATION SHALL NOT BE MORE THAN 4 INCHES FROM A 5.0 FOOT CHORD PERPENDICULAR TO THE CONTROL LINE OF THE ROADWAY. THE CHORD SHALL INTERSECT THE SIDE SLOPE ON EACH SIDE OF THE FOUNDATION.



BREAKAWAY SUPPORT CLEARANCE DIAGRAMS



FOUNDATION GRADING / SLOPE TREATMENT



CROSS SLOPES PERPENDICULAR TO THE FLOW OF TRAFFIC MUST BE 6:1 OR FLATTER. CROSS SLOPES PERPENDICULAR TO THE FLOW OF TRAFFIC ON THE INTERSTATE SYSTEM MUST BE 10:1 OR FLATTER. SLOPES FROM THE EDGE OF THE ROADWAY TO THE POLE FOUNDATION SHOULD HAVE A 10:1 LONGITUDINAL TAPER

NOTES:

1. THE FOUNDATIONS SHALL BE LOCATED AS INDICATED ON THE PROJECT PLAN SHEETS.
2. FOUNDATION REBAR CAGES MAY BE WELDED IF THE STEEL REBAR CONFORMS TO ASTM A706/A706M AND ALL WELDING CONFORMS TO ANSI/AWS D1.4 (STRUCTURAL WELDING CODE - REINFORCING STEEL).
3. REBAR IN POLE FOUNDATIONS SHALL BE 60 KSI STEEL.
4. STEEL TEMPLATE REQUIRED FOR ANCHOR BOLT PLACEMENT.
5. SPARE STUBOUTS WHEN SHOWN ON PLAN SHEETS SHALL BE TERMINATED WITH A STEEL COUPLING AND FOAM PLUG AT BOTH ENDS.
6. CLASS 40 CONCRETE SHALL BE USED IN POLE FOUNDATIONS.
7. FOUNDATION CONCRETE SHALL ACHIEVE 100% STRENGTH AND CURE FOR A MINIMUM OF 7 DAYS BEFORE ANY LOADING IS APPLIED.
8. FILLER JOINT MATERIAL WILL BE PLACED AROUND POLE FOUNDATION WHEN POLE FOUNDATION IS IN CONTACT WITH SIDEWALK.
9. ELEVATION OF TOP OF POLE FOUNDATION SHALL MATCH THE ADJACENT PAVEMENT EDGE OR SIDEWALK ELEVATION.
10. ANCHOR BASE ASSEMBLIES SHALL BE INSTALLED AND TIGHTENED IN ACCORDANCE WITH SUBSECTION 619.03 OF THE ITD STANDARD SPECIFICATIONS FOR HIGHWAY CONSTRUCTION AND THE SUPPLEMENTAL SPECIFICATIONS.

POLE FOUNDATION SCHEDULE												
POLE TYPE	MT.HT.	MASTARM LENGTH	FOUNDATION TYPE	X	Y	HOOPS			VERTICAL REBAR			CU. YDS. CONCRETE
						NO.	SIZE	LIN.FT.	NO.	SIZE	LIN.FT.	
PEDESTRIAN SIGNAL POLE	-	-	A	2'-0"	5'-0"	4	#4	20'-10"	6	#4	25'-6"	.6
LIGHT POLE	30'	ALL	A	2'-0"	5'-0"	4	#4	20'-10"	6	#4	25'-6"	.6
LIGHT POLE	35'	ALL	B	2'-6"	7'-0"	4	#4	27'-2"	6	#6	37'-6"	1.3
LIGHT POLE	40'-50'	ALL	C	3'-0"	8'-0"	5	#4	41'-10"	8	#6	58'-0"	2.1
SIGNAL POLE		20' - 45'	D	3'-0"	9'-0"	5	#4	41'-10"	8	#6	66'-0"	2.4
PEDESTRIAN PUSHBUTTON POLE	4'-0"	-	E	1'-6"	2'-6"	-	-	-	-	-	-	.2
DUAL MAST ARM SIGNAL POLE	-	ALL	F	3'-0"	12'-0"	8	#5	66'-10"	12	#6	135'-0"	3.1
SIGNAL POLE	-	50' - 55'	F	3'-0"	12'-0"	8	#5	66'-10"	12	#6	135'-0"	3.1

THE LOWER 3/5 OF THE FOUNDATION TO BE PLACED AGAINST UNDISTURBED SOIL UNLESS OTHERWISE APPROVED BY THE ENGINEER. THE UPPER 2/5 OF THE FOUNDATION MAY BE FORMED AS NEEDED.

ORIGINAL STORED AT: ITD, Headquarters 3311 West State Boise, Idaho

REVISIONS							
NO.	DATE	BY	NO.	DATE	BY	NO.	DATE

SCALES SHOWN ARE FOR 11" X 17" PRINTS ONLY  
 CADD FILE NAME: i7c\_1215.dgn  
 DRAWING DATE: DECEMBER, 2015

**IDAHO TRANSPORTATION DEPARTMENT**

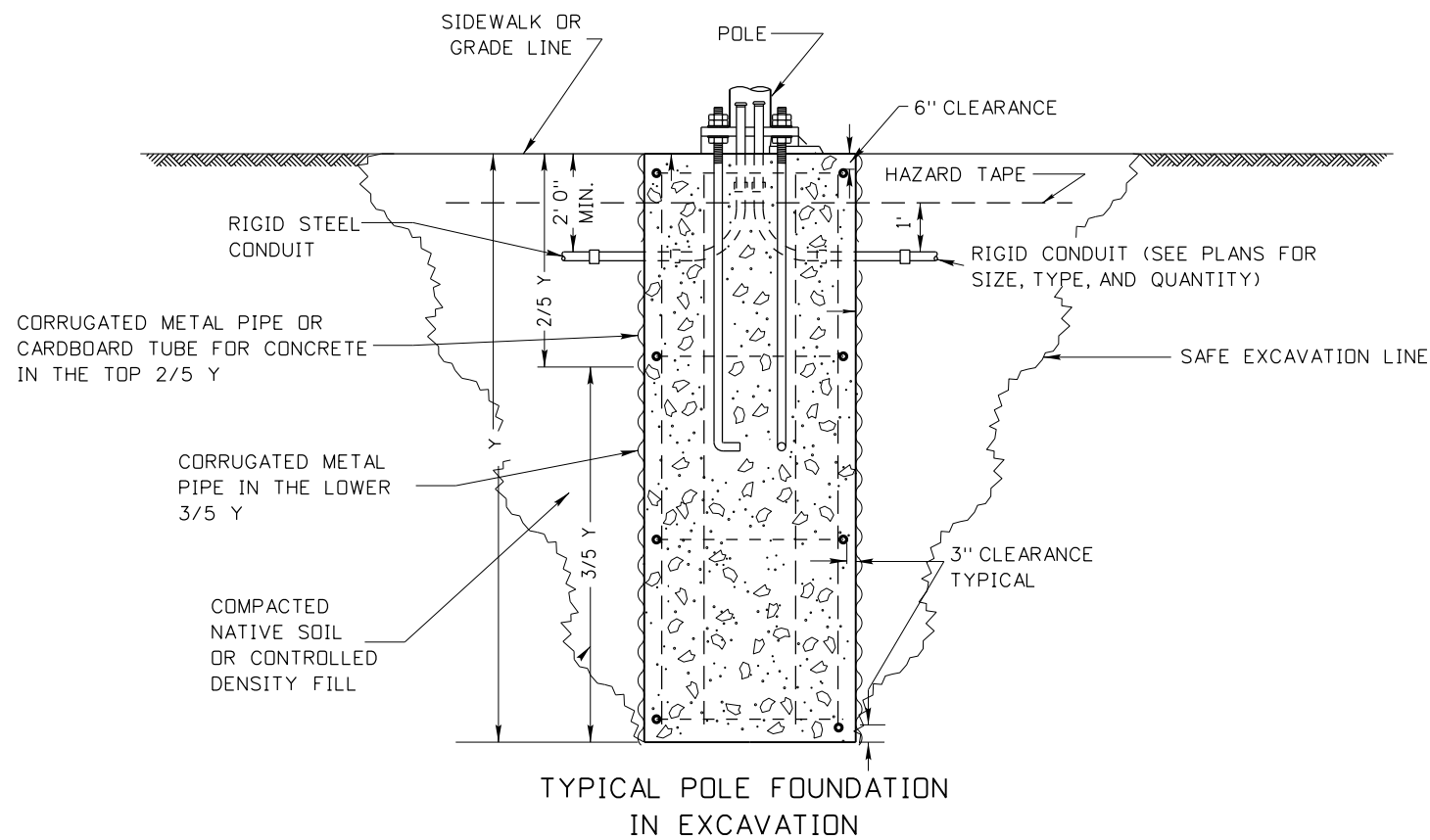
BOISE IDAHO

ORIGINAL SIGNED BY: KEVIN SABLAN  
 DESIGN/TRAFFIC SERVICES ENGINEER

STANDARD DRAWING  
**MAST ARM SIGNAL POLE, LIGHTING POLE AND PEDESTRIAN POLE FOUNDATION DETAILS**  
 REQUIRES SHEET 2 OF 2

**English**  
 STANDARD DRAWING NO. I-7-C  
 SHEET 1 OF 2

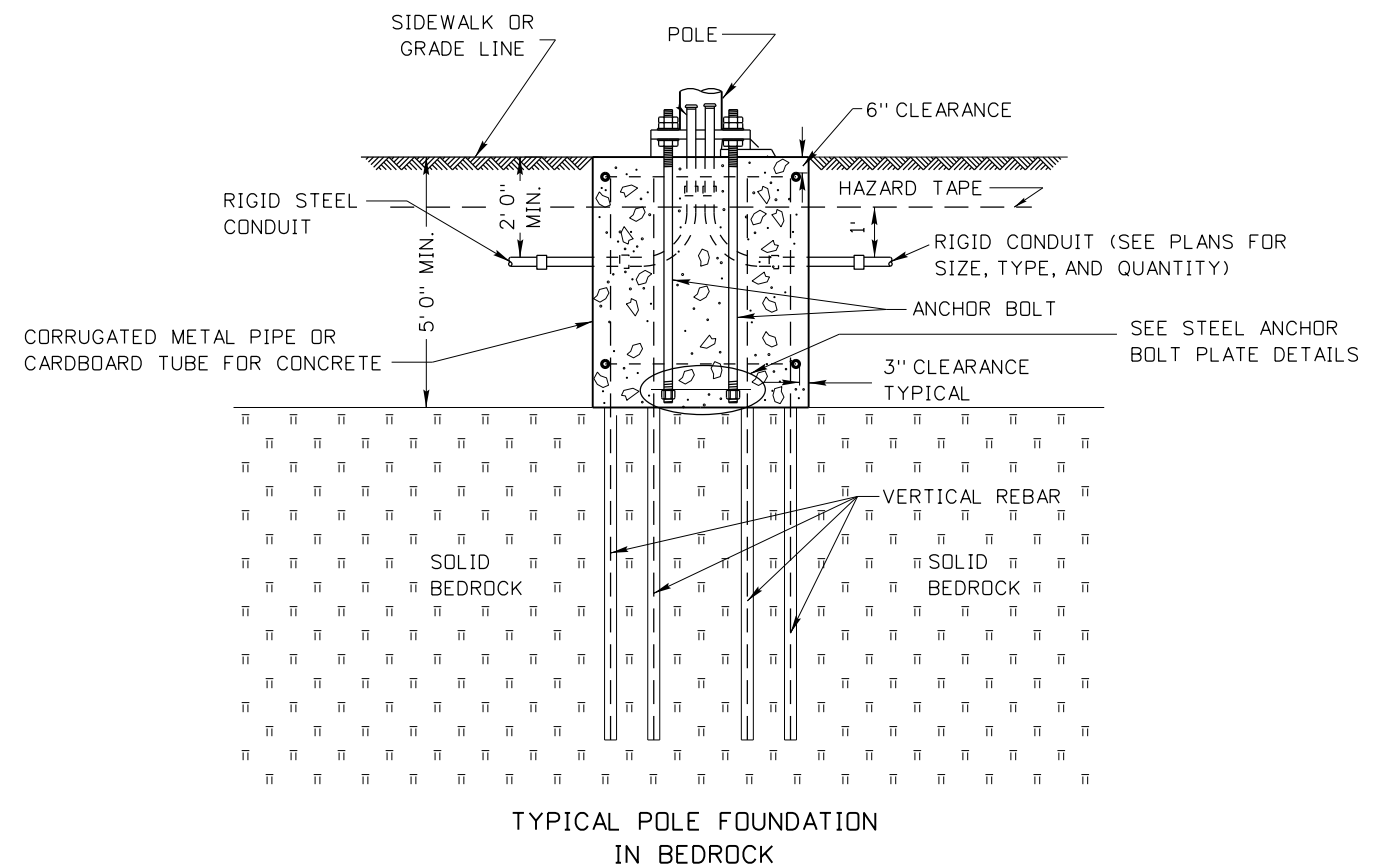
ORIGINAL SIGNED BY: TRI BUJ  
 DATE ORIGINAL SIGNED: DECEMBER 4, 2015



TYPICAL POLE FOUNDATION  
IN EXCAVATION

**EXCAVATION NOTES:**

1. IF CORRUGATED METAL PIPE IS USED UP TO SIDEWALK OR GRADE LINE, CUT OUT HOLE FOR THE CONDUITS WILL BE EQUAL TO THE DIAMETER OF CONDUIT OR CONDUITS PLUS ONE INCH.
2. WHEN NATIVE SOIL IS USED FOR BACKFILL, IT SHALL BE COMPACTED IN ACCORDANCE WITH SUBSECTION 210.03 OF THE IDAHO STANDARD SPECIFICATIONS FOR HIGHWAY CONSTRUCTION AND SUPPLEMENTAL SPECIFICATIONS.
3. IF CONTROL DENSITY FILL IS USED FOR BACK FILL, IT SHALL HAVE A COMPRESSIVE STRENGTH OF 100 PSI TO 300 PSI.
4. DRAWING NOT TO SCALE.

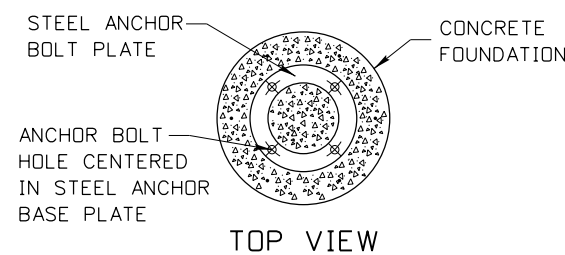


TYPICAL POLE FOUNDATION  
IN BEDROCK

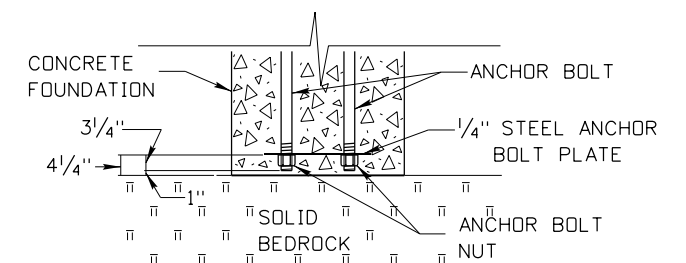
**SOLID BEDROCK NOTES:**

1. IF DEPTH TO BEDROCK IS LESS THAN 5', NOTIFY THE ENGINEER AND REDESIGN OF THE FOUNDATION MAY BE REQUIRED.
2. SOCKET ALL VERTICAL REBAR FULL LENGTH AS SHOWN IN POLE FOUNDATION SCHEDULE ON SHEET 1 IN BEDROCK. DIAMETERS OF DRILLED HOLES FOR VERTICAL REBAR SHALL BE AT LEAST 2 INCHES. FILL DRILLED HOLES WITH GROUT, 705.02, TYPE B, CLASS 1.
3. EXCAVATION NOTES APPLY TO THIS APPLICATION.
4. DRAWING NOT TO SCALE.

**STEEL ANCHOR BOLT PLATE DETAILS**



TOP VIEW



SIDE VIEW

ANCHOR BOLT PLATE SCHEDULE		
BOLT CIRCLE	OUTSIDE DIAMETER	INSIDE DIAMETER
17 1/2"	21 1/4"	13 3/4"
18 1/2"	22 1/4"	14 3/4"
22"	26 1/4"	17 3/4"

SEE STANDARD DRAWING I-7-C SHEET 1 FOR DETAILS

ORIGINAL STORED  
AT: ITD,  
Headquarters  
3311 West State  
Boise, Idaho

REVISIONS								
NO.	DATE	BY	NO.	DATE	BY	NO.	DATE	BY

SCALES SHOWN  
ARE FOR 11" X 17"  
PRINTS ONLY

CADD FILE NAME:  
i7c\_1215.dgn

DRAWING DATE:  
DECEMBER, 2015

**IDAHO  
TRANSPORTATION  
DEPARTMENT**



BOISE IDAHO

ORIGINAL SIGNED BY: KEVIN SABLAN  
DESIGN/TRAFFIC SERVICES ENGINEER

STANDARD DRAWING  
**MAST ARM SIGNAL POLE,  
LIGHTING POLE AND PEDESTRIAN  
POLE FOUNDATION DETAILS**  
REQUIRES SHEET 1 OF 2

**English**  
STANDARD DRAWING NO.  
**I-7-C**  
SHEET 2 OF 2

ORIGINAL SIGNED BY:  
TRJ BUJ  
DATE ORIGINAL SIGNED:  
DECEMBER 4, 2015